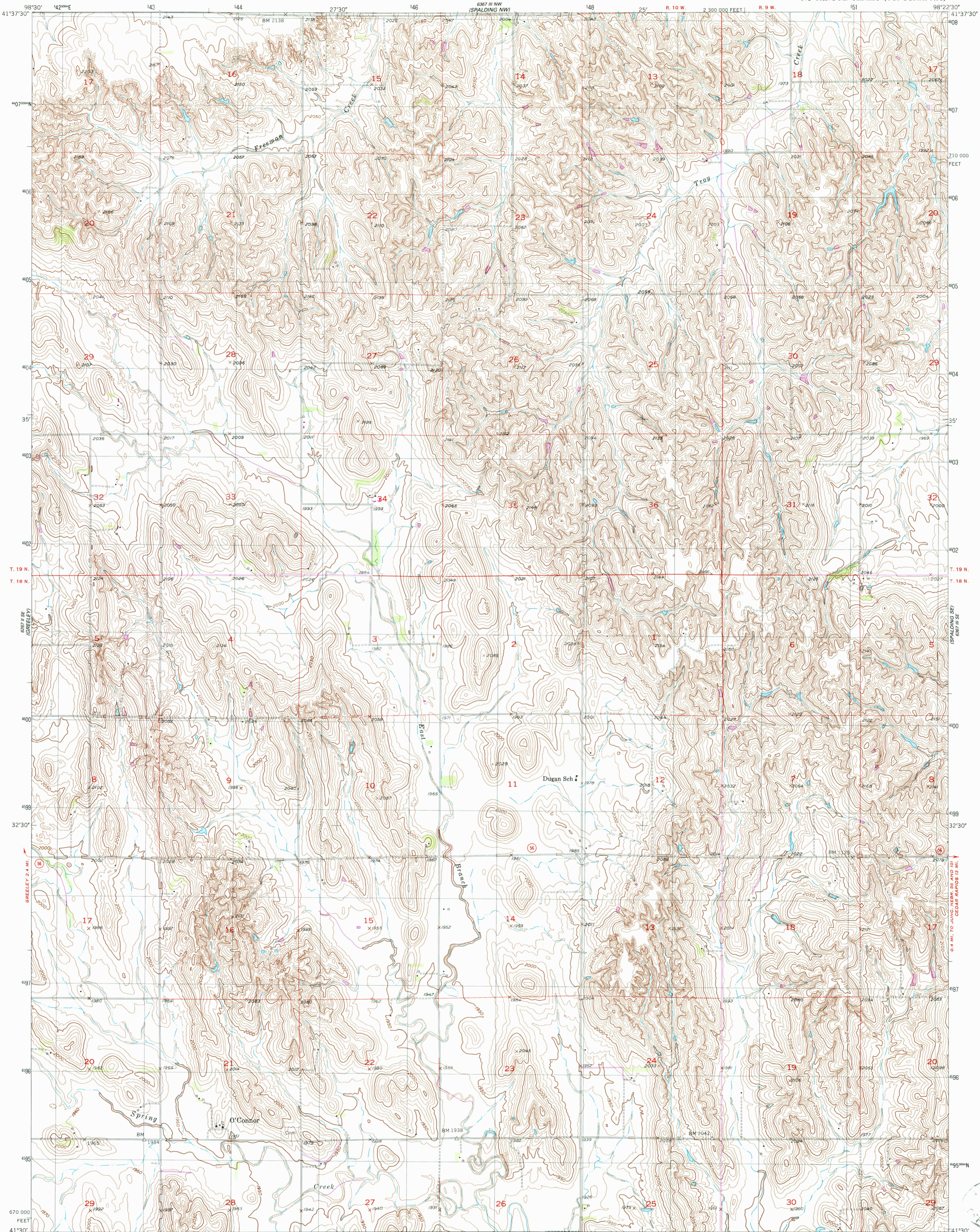


6367 III NE
(Greeley NE)

UNITED STATES
DEPARTMENT OF THE INTERIOR
GEOLOGICAL SURVEY

SPALDING SW QUADRANGLE
NEBRASKA-GREELEY CO.
7.5 MINUTE SERIES (TOPOGRAPHIC)

6367 III NE
(Spalding NE)

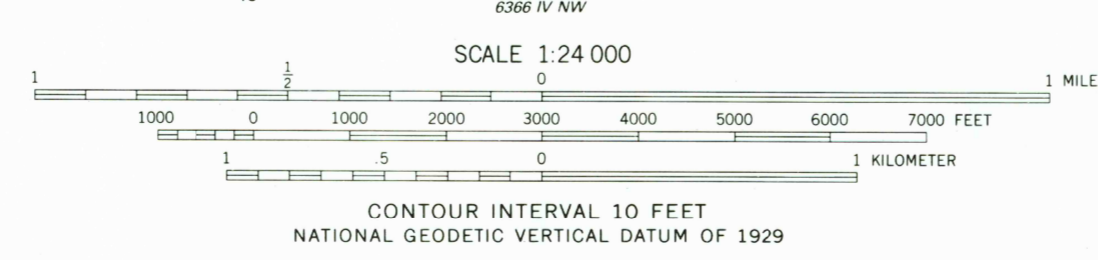
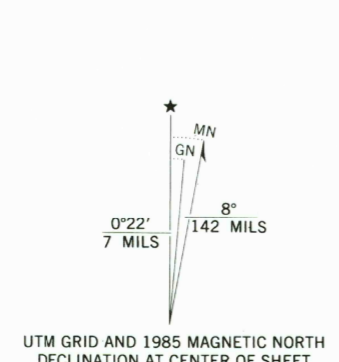


6367 III NE
(Greeley NE)

Mapped, edited, and published by the Geological Survey as part of the Department of the Interior program for the development of the Missouri River Basin Control by USGS and USC&GS

Topography from aerial photographs by multiple methods
Aerial photographs taken 1951. Field check 1954
Polyconic projection. 1927 North American datum
10,000-foot grid based on Nebraska coordinate system, south zone
1000-meter Universal Transverse Mercator grid, zone 14
To place on the predicted North American Datum 1983, move the projection lines 5 meters north and 30 meters east as shown by dashed corner ticks

Revisions shown in purple and woodland compiled from aerial photographs taken 1981 and other sources
This information not field checked. Map edited 1985



ROAD CLASSIFICATION

Heavy-duty	4 LANE 6 LANE	Light-duty
Medium-duty	4 LANE 6 LANE	Unimproved dirt

U.S. Route State Route

NOV 25 1985
REFERENCE COLLECTION

THIS MAP COMPLIES WITH NATIONAL MAP ACCURACY STANDARDS
FOR SALE BY U.S. GEOLOGICAL SURVEY, DENVER, COLORADO 80225, OR RESTON, VIRGINIA 22092
A FOLDER DESCRIBING TOPOGRAPHIC MAPS AND SYMBOLS IS AVAILABLE ON REQUEST

SPALDING SW, NEBR.
41098-E4-TF-024
1954
PHOTOREVISED 1985
DMA 6367 III SW-SERIES V875