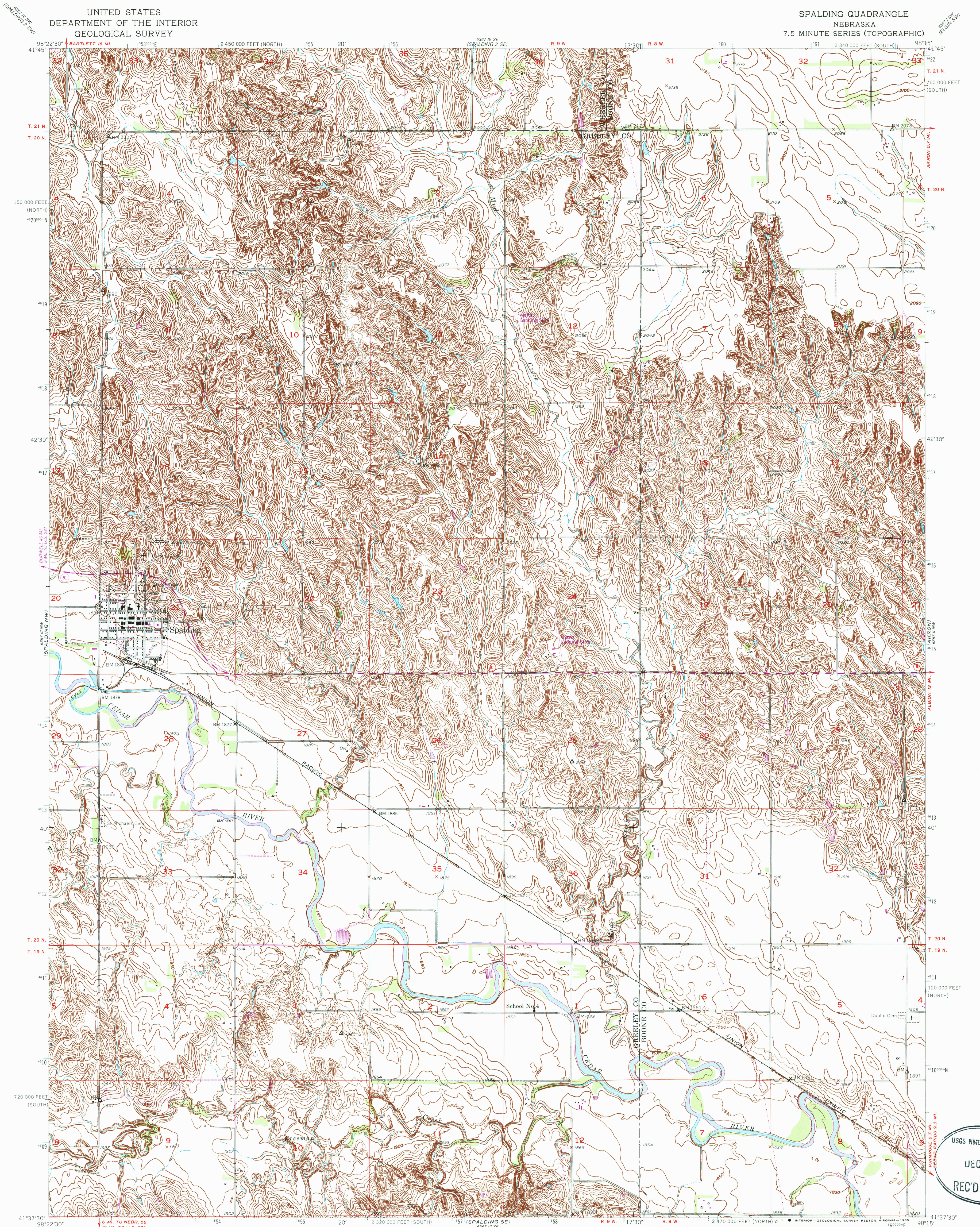
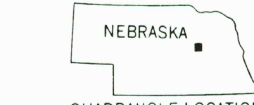
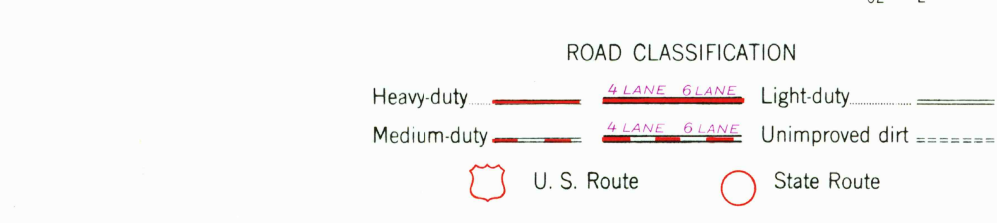
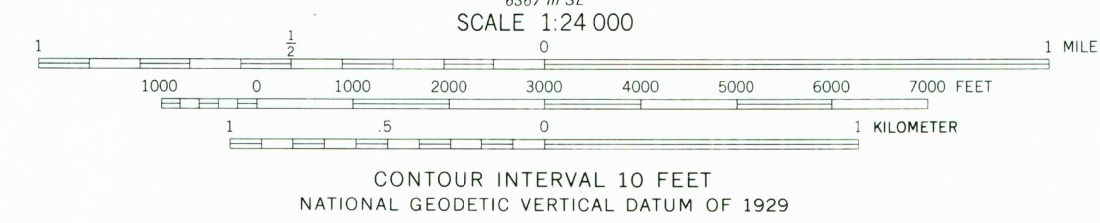
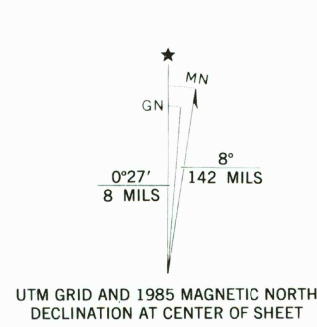


UNITED STATES  
DEPARTMENT OF THE INTERIOR  
GEOLOGICAL SURVEY

SPALDING QUADRANGLE  
NEBRASKA  
7.5 MINUTE SERIES (TOPOGRAPHIC)



Mapped, edited, and published by the Geological Survey as part of the Department of the Interior program for the development of the Missouri River Basin. Control by USGS, USC&GS, and U.S. Bureau of Reclamation. Topography from aerial photographs by photogrammetric methods. Aerial photographs taken 1951. Field check 1954. Polyconic projection. 1927 North American datum. 10,000 foot grids based on Nebraska coordinate system, north and south zones. 1000-meter Universal Transverse Mercator grid ticks. Zone 14, shown in blue. To place on the predicted North American Datum 1983, move the projection lines 5 meters north and 30 meters east as shown by dashed corner ticks.



SPALDING, NEBR.  
41098-F3-TF-024

1954  
PHOTOREVISED 1985  
DMA 6367 III NE-SERIES 7875

THIS MAP COMPLIES WITH NATIONAL MAP ACCURACY STANDARDS.  
FOR SALE BY U. S. GEOLOGICAL SURVEY, DENVER, COLORADO 80225, OR RESTON, VIRGINIA 22092.  
A FOLDER DESCRIBING TOPOGRAPHIC MAPS AND SYMBOLS IS AVAILABLE ON REQUEST.

USGS NMD HISTORICAL MAP  
JEC 3 1 1985  
REC'D FILE COPY