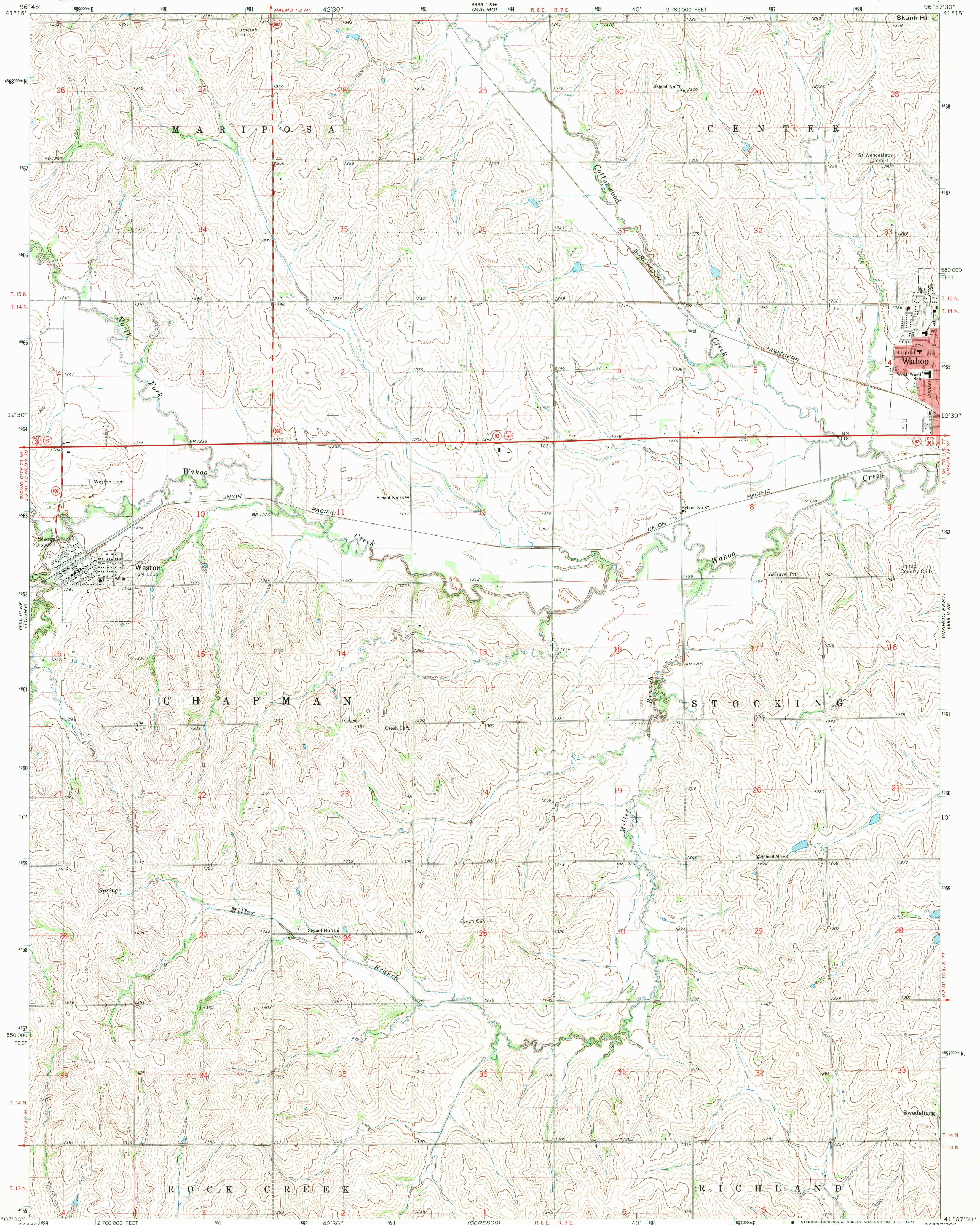


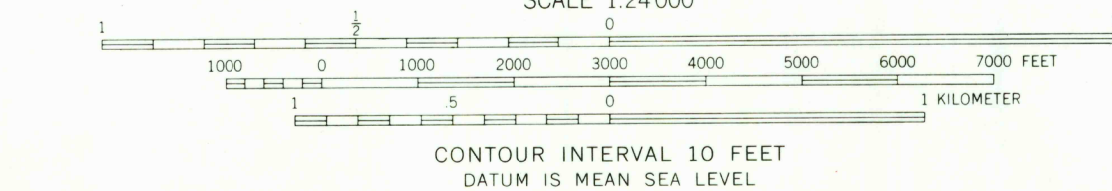
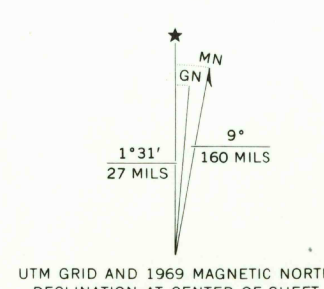
UNITED STATES  
DEPARTMENT OF THE INTERIOR  
GEOLOGICAL SURVEY

WAHOO WEST QUADRANGLE  
NEBRASKA—SAUNDERS CO.  
7.5 MINUTE SERIES (TOPOGRAPHIC)

6666 11 NW  
100,000



Mapped, edited, and published by the Geological Survey as part of the Department of the Interior program for the development of the Missouri River Basin Control by USGS and USC&GS  
Topography by photogrammetric methods from aerial photographs taken 1968. Field checked 1969  
Polyconic projection. 1927 North American datum 10,000-foot grid based on Nebraska coordinate system, south zone 1000-meter Universal Transverse Mercator grid ticks, zone 14, shown in blue  
Red tint indicates area in which only landmark buildings are shown  
Fine red dashed lines indicate selected fence and field lines where generally visible on aerial photographs. This information is unchecked



ROAD CLASSIFICATION  
Primary highway, all weather, hard surface  
Secondary highway, all weather, hard surface  
Light-duty road, all weather, improved surface  
Unimproved road, fair or dry weather  
U.S. Route  
State Route

THIS MAP COMPLIES WITH NATIONAL MAP ACCURACY STANDARDS  
FOR SALE BY U.S. GEOLOGICAL SURVEY, DENVER, COLORADO 80225, OR WASHINGTON, D.C. 20242  
A FOLDER DESCRIBING TOPOGRAPHIC MAPS AND SYMBOLS IS AVAILABLE ON REQUEST

USGS  
HISTORICAL FILE  
TOPOGRAPHIC DIVISION

WAHOO WEST, NEBR.  
N4107.5—W9637.5/7.5  
1969  
AMS 6666 11 NW—SERIES V875

SEP 13 1971

2100