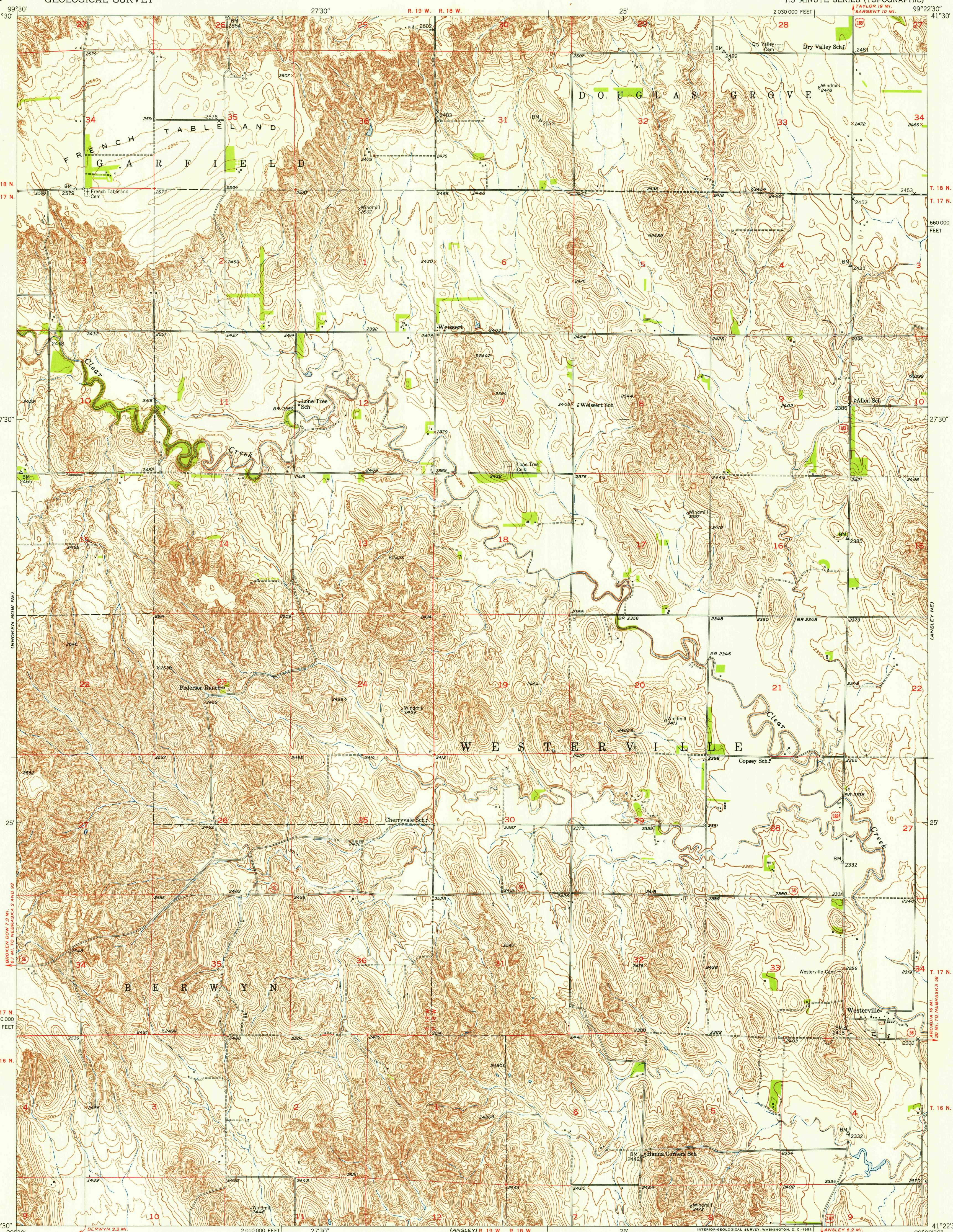
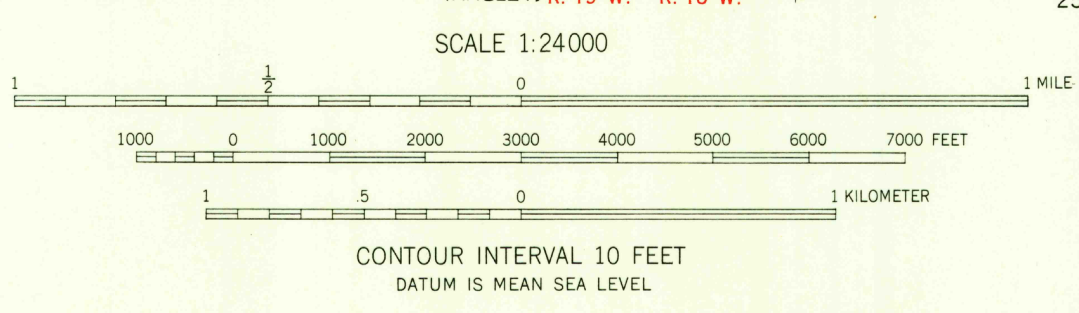


U. S. G. S.
FILE COPY
Inspection and Editing



Mapped, edited, and published by the Geological Survey as part of the Department of the Interior program for the development of the Missouri River Basin. Control by USGS and USC&GS. Topography from aerial photographs by multiplex methods. Aerial photographs taken 1949. Field check 1951. Polyconic projection. 1927 North American datum. 10,000-foot grid based on Nebraska coordinate system, south zone.

TRUE NORTH
MAGNETIC NORTH
APPROXIMATE MEAN DECLINATION, 1951



ROAD CLASSIFICATION
Heavy-duty 4 LANE 16 LANE Light-duty
Medium-duty 4 LANE 16 LANE Unimproved dirt
U. S. Route State Route

THIS MAP COMPLIES WITH NATIONAL MAP ACCURACY STANDARDS
FOR SALE BY U. S. GEOLOGICAL SURVEY, FEDERAL CENTER, DENVER, COLORADO OR WASHINGTON 25, D. C.
A FOLDER DESCRIBING TOPOGRAPHIC MAPS AND SYMBOLS IS AVAILABLE ON REQUEST

U. S. G. S.
FILE COPY
Inspection and Editing

WESTERVILLE, NEBR.
N4122.5-W9922.5/7.5
1951

USGS
Historical File
Topographic Division