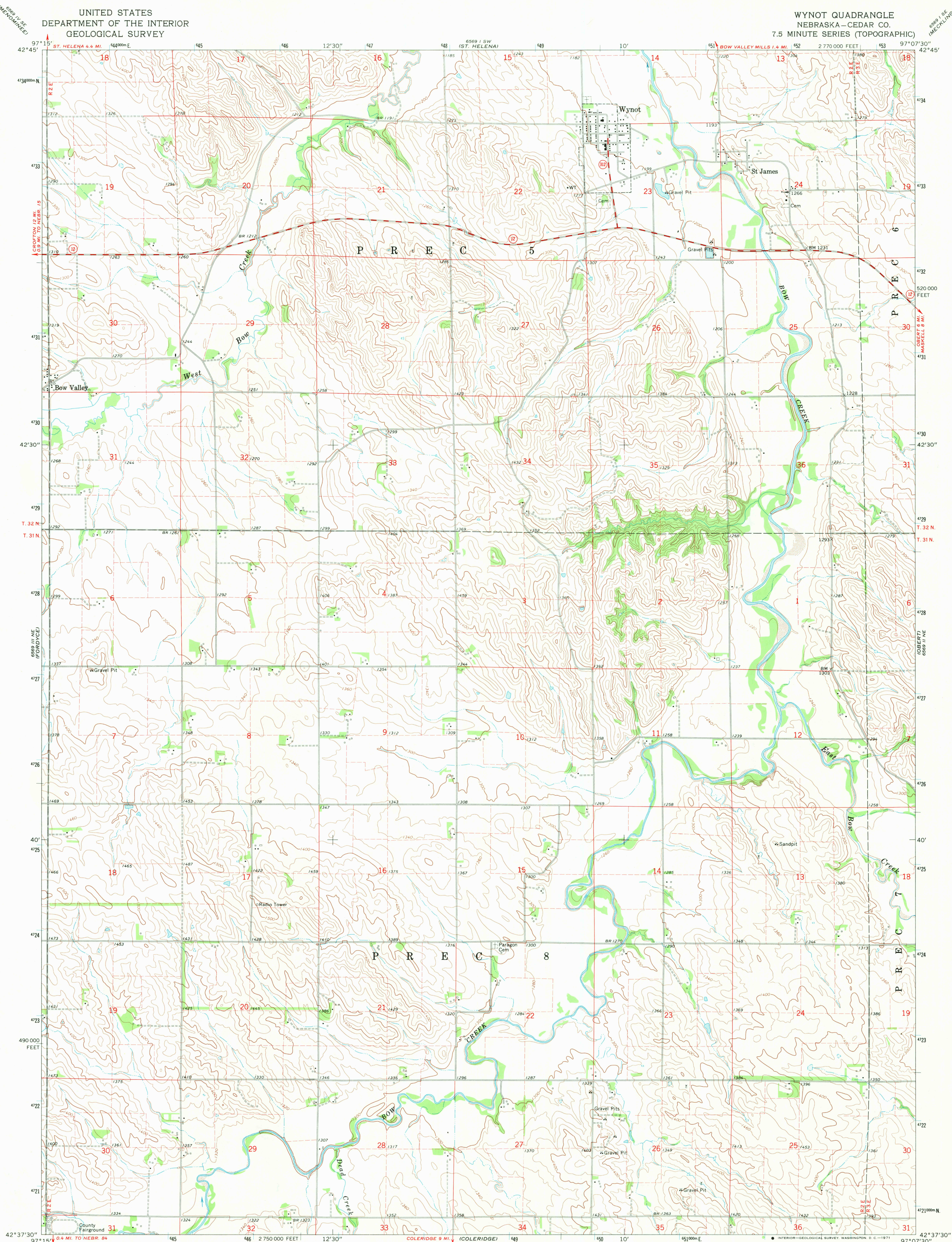
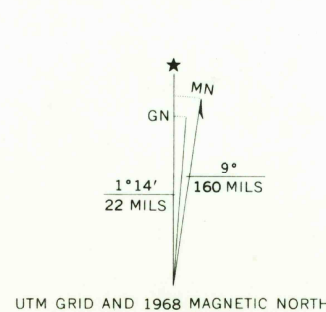


UNITED STATES  
DEPARTMENT OF THE INTERIOR  
GEOLOGICAL SURVEY

WYNOT QUADRANGLE  
NEBRASKA—CEDAR CO.  
7.5 MINUTE SERIES (TOPOGRAPHIC)

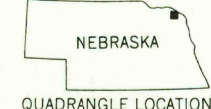


Mapped, edited, and published by the Geological Survey as part of the Department of the Interior program for the development of the Missouri River Basin. Control by USGS and USC&GS. Topography by photogrammetric methods from aerial photographs taken 1966. Field checked 1968. Polyconic projection. 1927 North American datum 10,000-foot grid based on Nebraska coordinate system, north zone 1000-meter Universal Transverse Mercator grid ticks, zone 14, shown in blue. Fine red dashed lines indicate selected fence and field lines where generally visible on aerial photographs. This information is unchecked.



THIS MAP COMPLIES WITH NATIONAL MAP ACCURACY STANDARDS  
FOR SALE BY U. S. GEOLOGICAL SURVEY, DENVER, COLORADO 80225, OR WASHINGTON, D. C. 20242  
A FOLDER DESCRIBING TOPOGRAPHIC MAPS AND SYMBOLS IS AVAILABLE ON REQUEST

ROAD CLASSIFICATION  
Secondary highway, all weather. Light-duty road, all weather, improved surface.  
Unimproved road, fair or dry weather.  
State Route



U.S.G.S.  
FILE COPY  
TOPOGRAPHIC DIVISION

WYNOT, NEBR.  
N4237.5—W9707.5/7.5  
1968  
AMS 6569 II NW—SERIES V875

MAR 16 1971  
USGS  
Historical File  
Topographic Division

2275