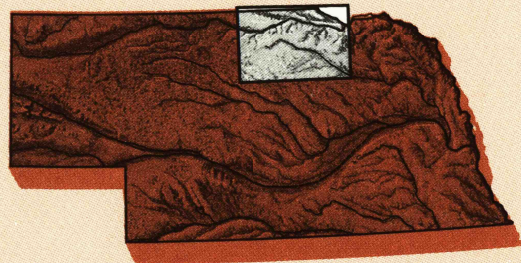


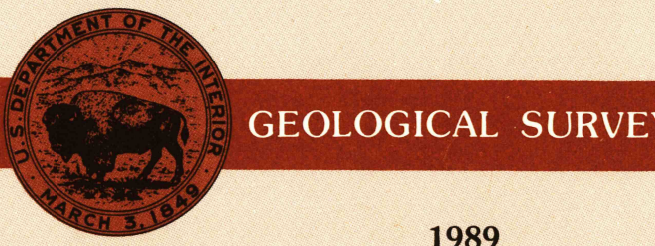
O'Neill  
NEBRASKA-SOUTH DAKOTA

1:250 000-scale metric  
topographic map



1 X 2 DEGREE QUADRANGLE  
SHOWING

- Contours and elevations in meters
- Highways, roads and other manmade structures
- Water features
- Woodland areas
- Geographic names



1989

Produced by the United States Geological Survey

Compiled from USGS 1:100 000-scale maps dated 1985-86  
Map edited 1989. Supersedes map dated 1971

North American Datum of 1983 (NAD 83). Projection and  
10 000-meter grid: Universal Transverse Mercator, zone 14  
25 000-meter grid ticks: Nebraska, and South Dakota (south  
zone) Coordinate Systems of 1983

The difference between NAD 83 and North American Datum of  
1927 (NAD 27) for 7.5 minute intersections is given in USGS  
Bulletin 1875

There may be private inholdings within the boundaries of the  
National or State reservations shown on this map

1989 MAGNETIC DECLINATION FROM THE NORTH VARIES  
FROM 8° 1' (151 MILES) EASTERLY FROM THE CENTER OF THE  
WEST EDGE TO 7° 1' (124 MILES) EASTERLY FOR THE CENTER  
OF THE EAST EDGE. MEAN ANNUAL CHANGE IS 7.2 WESTERLY

CONTOUR INTERVAL 20 METERS  
NATIONAL GEODETIC VERTICAL DATUM OF 1929  
ELEVATIONS SHOWN TO THE NEAREST METER

USGS NATIONAL MAP ACCURACY STANDARDS

AUG 27 1990

REC'D FILE COPY

Meters	Feet
1 3.2808	1 3.2808
2 6.5617	2 6.5617
3 9.8425	3 9.8425
4 13.1234	4 13.1234
5 16.4042	5 16.4042
6 19.6850	6 19.6850
7 22.9659	7 22.9659
8 26.2467	8 26.2467
9 29.5276	9 29.5276
10 32.8084	10 32.8084

To convert meters to feet  
multiply by 3.2808

To convert feet to meters  
multiply by 0.3048

ADJOINING MAPS		
1	2	3
4		5
6	7	8

- 1 Martin
- 2 Mitchell
- 3 Sioux Falls
- 4 Valentine
- 5 Sioux City
- 6 North Platte
- 7 Broken Bow
- 8 Fremont

FOR SALE BY U.S. GEOLOGICAL SURVEY  
DENVER, COLORADO 80225, OR RESTON, VIRGINIA 22092

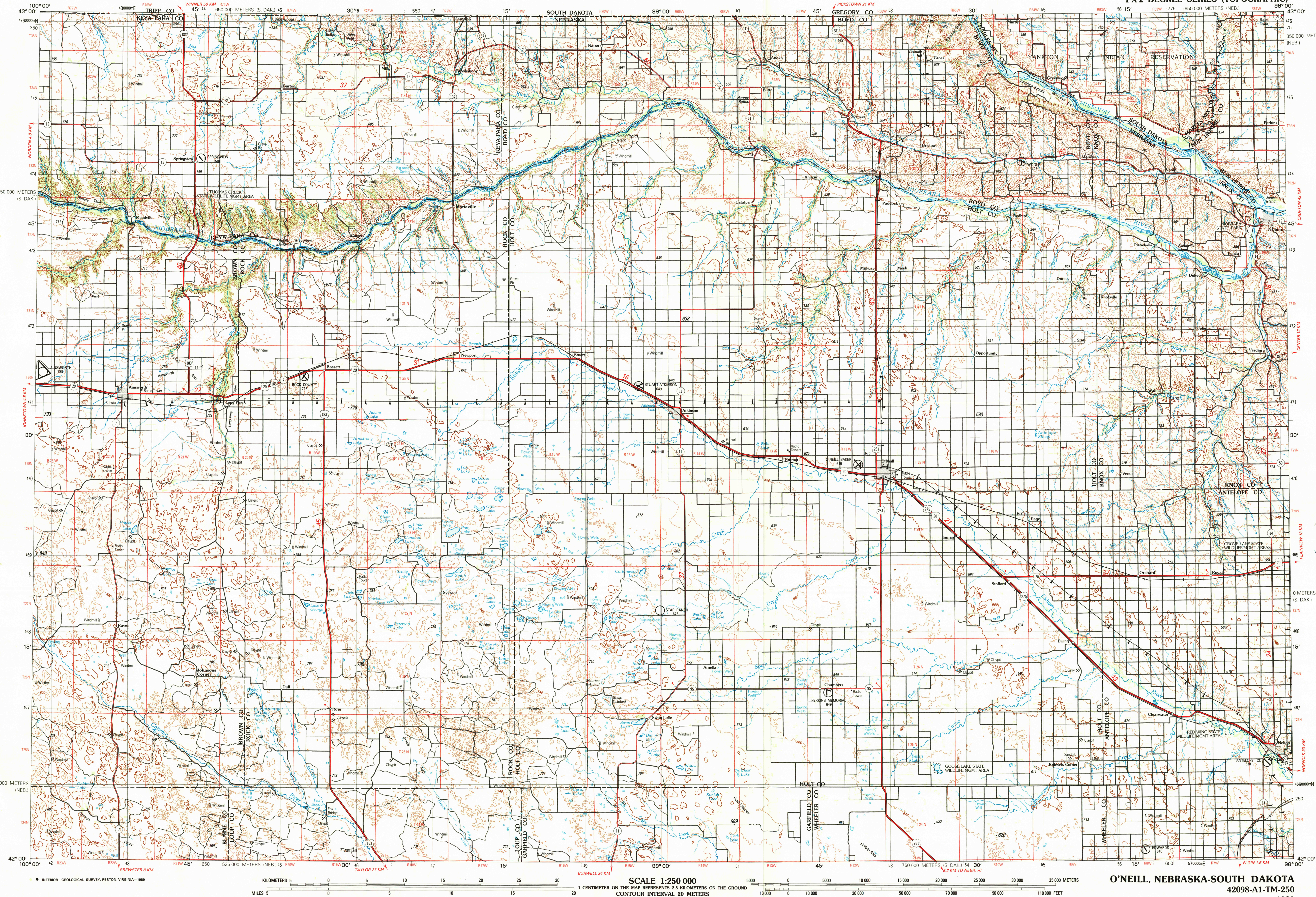
Topographic Map Symbols

Dual highway, interchange	
Primary highway, hard surface	
Secondary highway, hard surface	
Light duty road, hard or improved surface	
Other road, trail	
Route marker: Interstate, U.S., State	
Bridge: overpass; underpass	
Tunnel: road; railroad	
Railroad: standard gauge; single, multiple track	
Railroad: narrow gauge; single, multiple track	
Build-up areas: locality; elevation	
Airport: runway pattern known; unknown	
National boundary	
State boundary	
County boundary	
National or State reservation boundary	
Land grant boundary	
U.S. public lands survey: range, township (surveyed)	
U.S. public lands survey: range, township (protected)	
Pipeline: pipeline; aboveground, underground	
Dam; landmark feature; landmark building	
Well: water; other; spring; tank	
Cave: mine, quarry; oil platform	
Landmark area: landmark railroad	
Distorted surface: strip mine; lava; sand	
Contours: index; intermediate; supplementary	
Bathymetric contours: index; primary	
Bathymetric contours: intermediate; supplementary	
Stream, lake: perennial; intermittent	
Rapids, large and small; falls, large and small	
Land subject to controlled inundation: marsh, swamp	
Woodland: orchard, vineyard	
Margrove	

Figures in red denote approximate distances in kilometers between markers  
A pamphlet describing topographic maps is available on request

O'NEILL, NEBRASKA-SOUTH DAKOTA

1 X 2 DEGREE SERIES (TOPOGRAPHIC)



SCALE 1:250 000

1 CENTIMETER ON THE MAP REPRESENTS 2.5 KILOMETERS ON THE GROUND

CONTOUR INTERVAL 20 METERS

O'NEILL, NEBRASKA-SOUTH DAKOTA

42098-A1-TM-250

1989