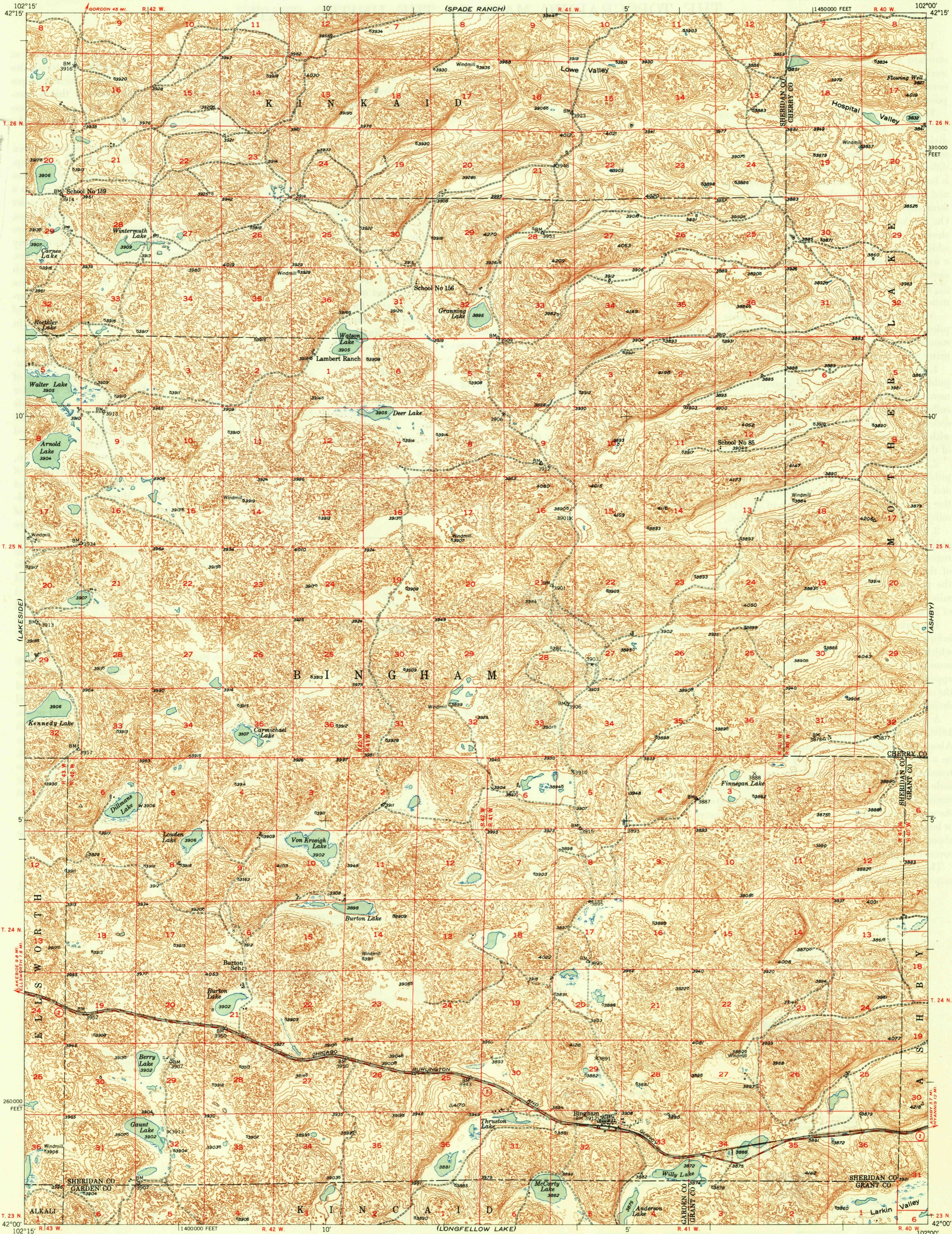
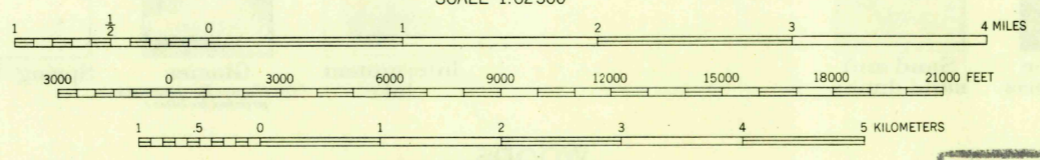
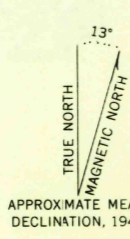


U.S.G.S.
FILE COPY
Inspection and Printing



Mapped, edited, and published by the Geological Survey as part of the Department of the Interior program for the development of the Missouri River Basin. Control by USGS and USC&GS. Topography from aerial photographs by multiplex methods. Aerial photographs taken 1946. Field check 1948. Polyconic projection. 1927 North American datum. 10,000-foot grid based on Nebraska coordinate system, north zone.



ROAD CLASSIFICATION

HARD-SURFACE ALL WEATHER ROADS	DRY WEATHER ROADS
Heavy-duty — 4 LANE IS LANE	Improved dirt —
Medium-duty — 4 LANE IS LANE	Unimproved dirt —
Loose-surface, graded, or narrow hard-surface —	
U. S. Route	State Route

U.S.G.S.
FILE COPY
Inspection and Printing

USGS
Historical File
Topographic Division
BINGHAM, NEBR.
N4200-W10200/15
EDITION OF 1950

THIS MAP COMPLIES WITH NATIONAL MAP ACCURACY STANDARDS
FOR SALE BY U. S. GEOLOGICAL SURVEY, DENVER, COLORADO OR WASHINGTON 25, D. C.