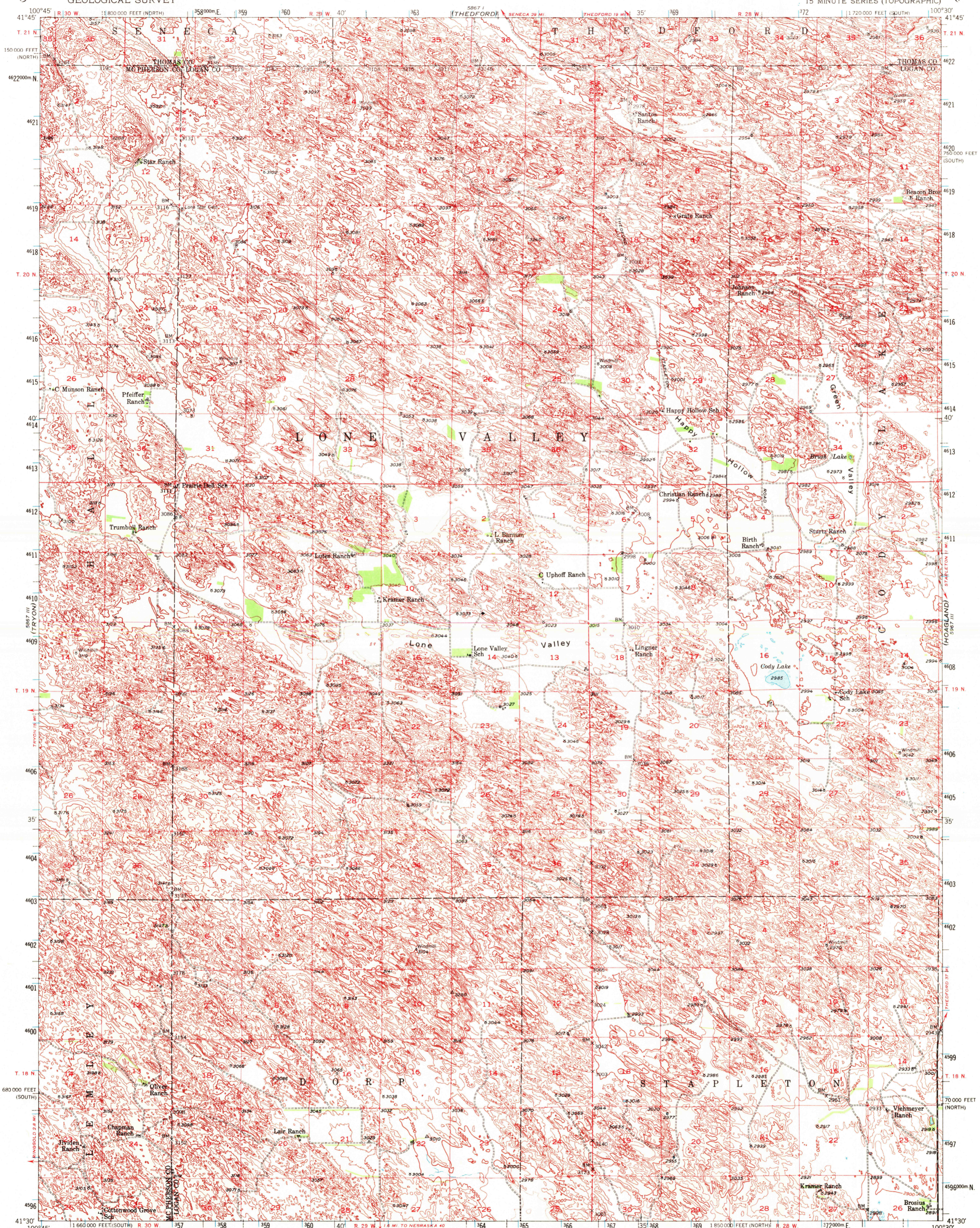
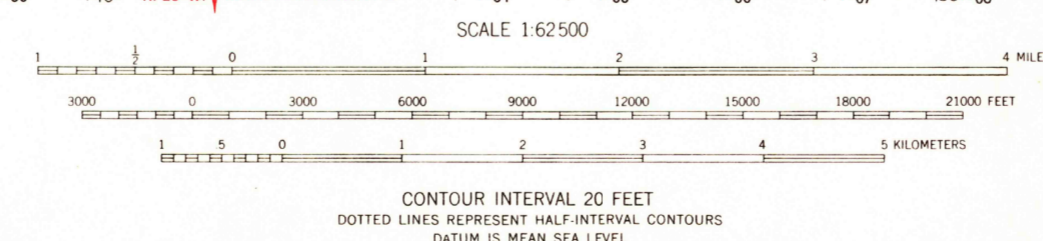
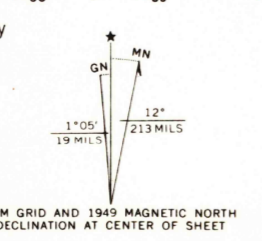


UNITED STATES  
DEPARTMENT OF THE INTERIOR  
GEOLOGICAL SURVEY

CODY LAKE QUADRANGLE  
NEBRASKA  
15 MINUTE SERIES (TOPOGRAPHIC)



Mapped, edited, and published by the Geological Survey as part of the Department of the Interior program for the development of the Missouri River Basin  
Control by USGS and USC&GS  
Topography from aerial photographs by multiplex methods  
Aerial photographs taken 1946, field check 1949  
Polyconic projection, 1927 North American datum  
10,000-foot grids based on Nebraska coordinate system, north and south zones  
1,000-meter Universal Transverse Mercator grid ticks, zone 14, shown in blue



ROAD CLASSIFICATION

HARD-SURFACE ALL WEATHER ROADS	DRY WEATHER ROADS
Heavy-duty	Improved dirt
Medium-duty	Unimproved dirt
Loose-surface, graded, or narrow hard surface	
U. S. Route	State Route

CODY LAKE, NEBR.  
N4130-W10030/15

1949  
AMS 5867 II-SERIES V775

THIS MAP COMPLIES WITH NATIONAL MAP ACCURACY STANDARDS  
FOR SALE BY U. S. GEOLOGICAL SURVEY, DENVER, COLORADO 80225 OR WASHINGTON, D. C. 20242  
A FOLDER DESCRIBING TOPOGRAPHIC MAPS AND SYMBOLS IS AVAILABLE ON REQUEST

AUG 7 1972

1226  
USGS  
HISTORICAL FILE  
TOPOGRAPHIC DIVISION