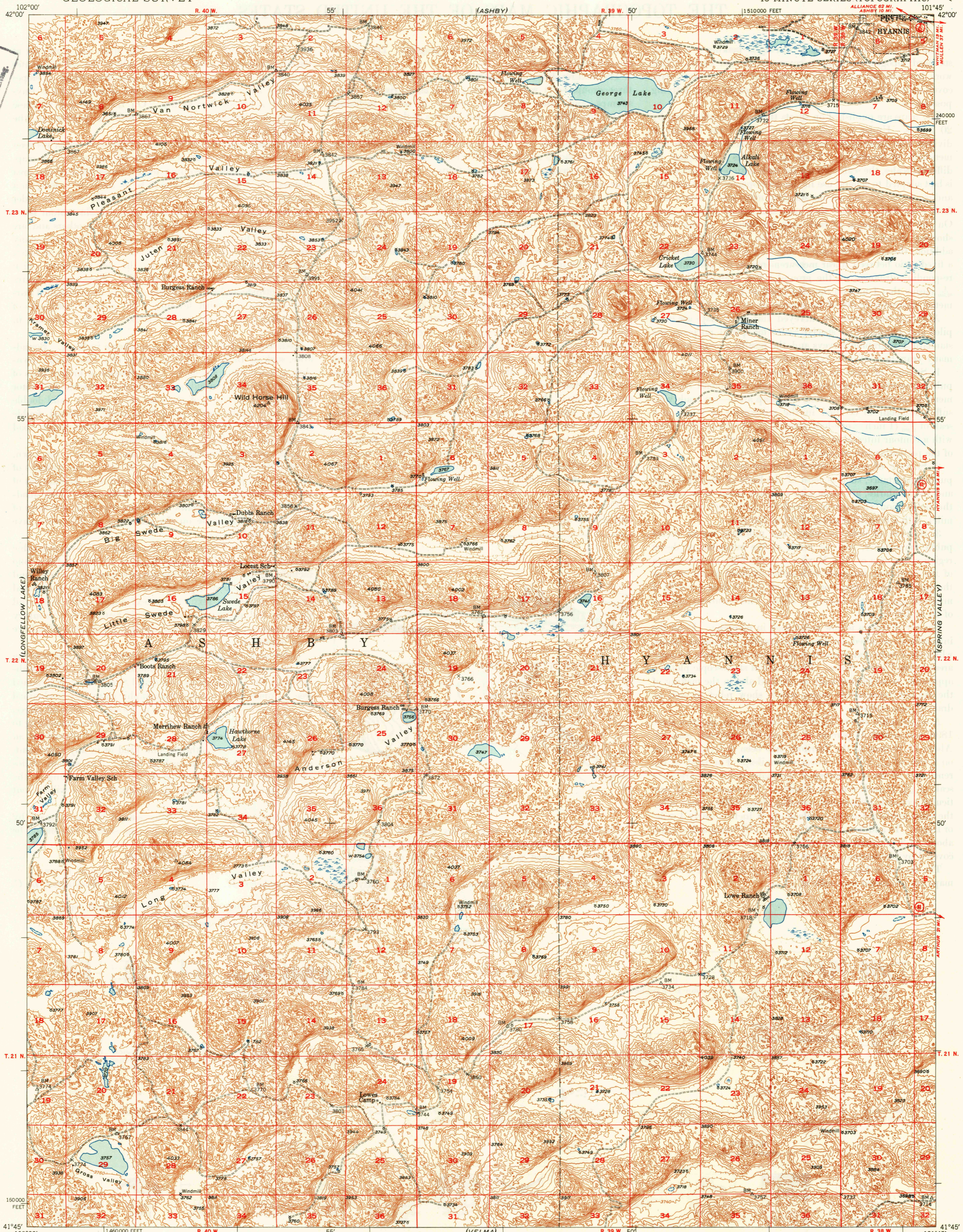


U.S.G.S.
FILE COPY
Inspection and Editing

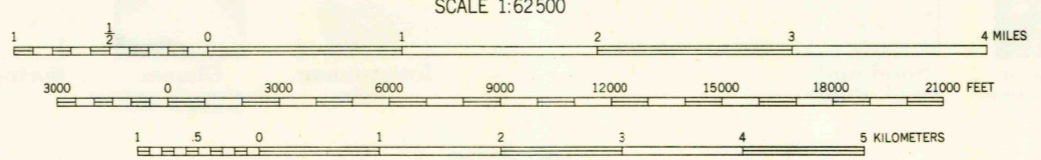


(GERRHAM)

(ASHBY)

(WHITMAN)

Mapped, edited and published by the Geological Survey as part of the Department of the Interior program for the development of the Missouri River Basin
Control by USGS and USC&GS
Topography from aerial photographs by multiplex methods
Aerial photographs taken 1946. Field check 1948
Polyconic projection. 1927 North American datum
10,000-foot grid based on Nebraska coordinate system, north zone



CONTOUR INTERVAL 20 FEET
DOTTED LINES REPRESENT HALF INTERVAL CONTOURS
DATUM IS MEAN SEA LEVEL

ROAD CLASSIFICATION
HARD-SURFACE ALL WEATHER ROADS DRY WEATHER ROADS
Heavy-duty **2 LANE ROAD** Improved dirt
Medium-duty **4 LANE ROAD** Unimproved dirt
Loose-surface, graded, or narrow hard-surface
U.S. Route State Route

USCS
Historical File
Topographic Division

GEORGE LAKE, NEBR.
N4145-W10145/15
EDITION OF 1950

THIS MAP COMPLIES WITH NATIONAL MAP ACCURACY STANDARDS
FOR SALE BY U.S. GEOLOGICAL SURVEY, DENVER, COLORADO OR WASHINGTON 25, D. C.

U.S.G.S.
FILE COPY
Inspection and Editing