

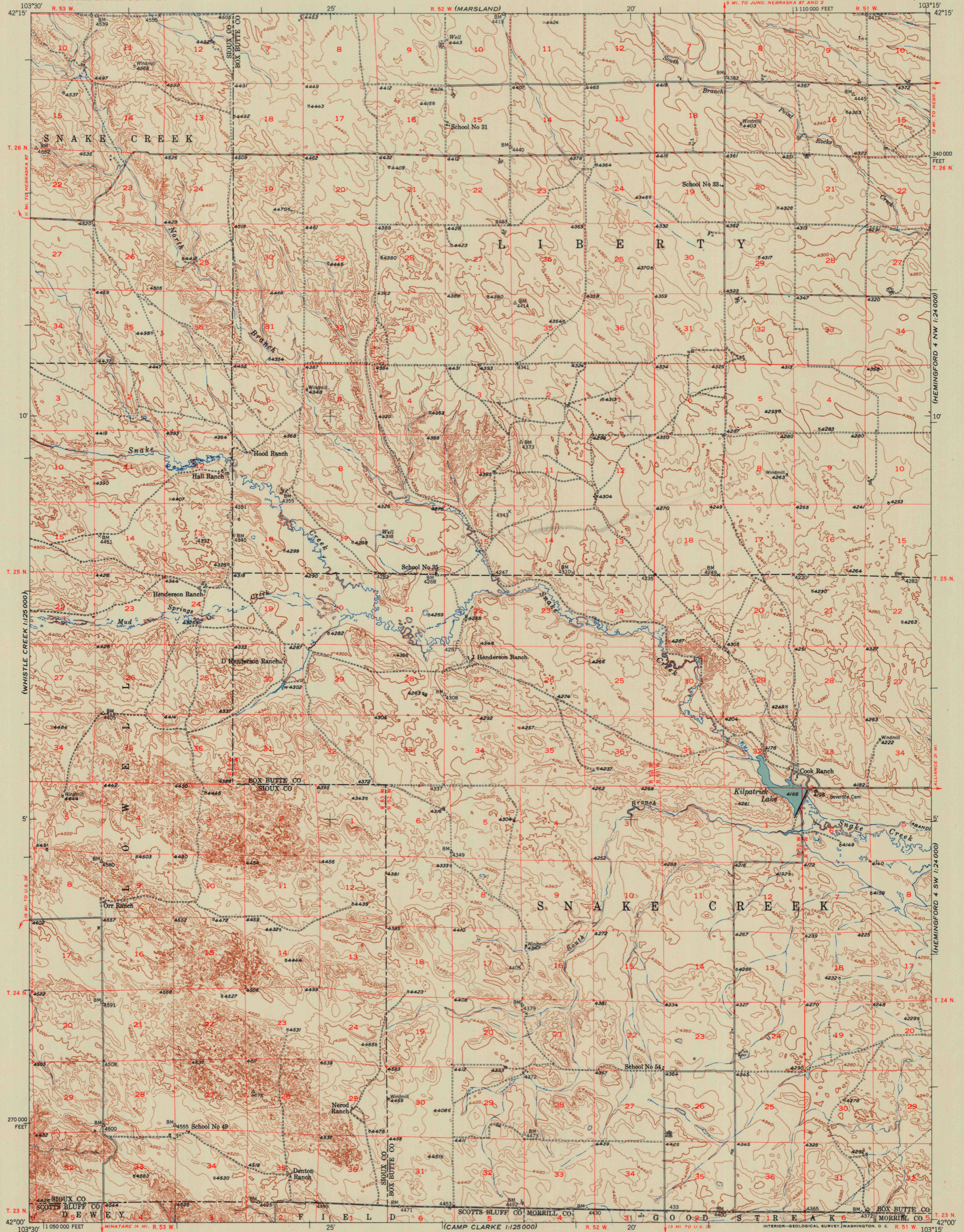
UNITED STATES
DEPARTMENT OF THE INTERIOR
GEOLOGICAL SURVEY

KILPATRICK LAKE QUADRANGLE
NEBRASKA

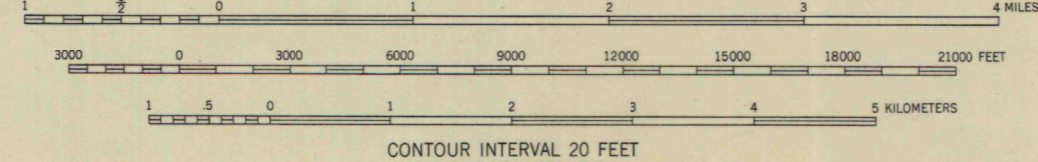
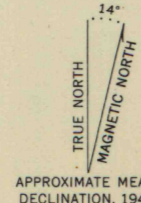
15 MINUTE SERIES (TOPOGRAPHIC)

(WHISTLE CREEK)
1:25,000

(NONPAREIL)
1:24,000



Mapped, edited, and published by the Geological Survey as part of the Department of the Interior program for the development of the Missouri River Basin Control by USGS and USC&GS
Topography from aerial photographs by multiplex methods
Aerial photographs taken 1946. Field check 1949
Polyconic projection. 1927 North American datum
10,000-foot grid based on Nebraska coordinate system, north zone



ROAD CLASSIFICATION

Heavy-duty	ALL WEATHER ROADS	Improved dirt	DRY WEATHER ROADS
Medium-duty	LANE LANE	Unimproved dirt	
Loose-surface, graded, or narrow hard-surface			
U. S. Route			State Route

FOR SALE BY U. S. GEOLOGICAL SURVEY, FEDERAL CENTER, DENVER, COLORADO OR WASHINGTON 25, D. C.
A FOLDER DESCRIBING TOPOGRAPHIC MAPS AND SYMBOLS IS AVAILABLE ON REQUEST

UNIVERSITY OF WISCONSIN
Department of Geography
KILPATRICK LAKE, NEBR.
N4200—W10315/15
EDITION OF 1951