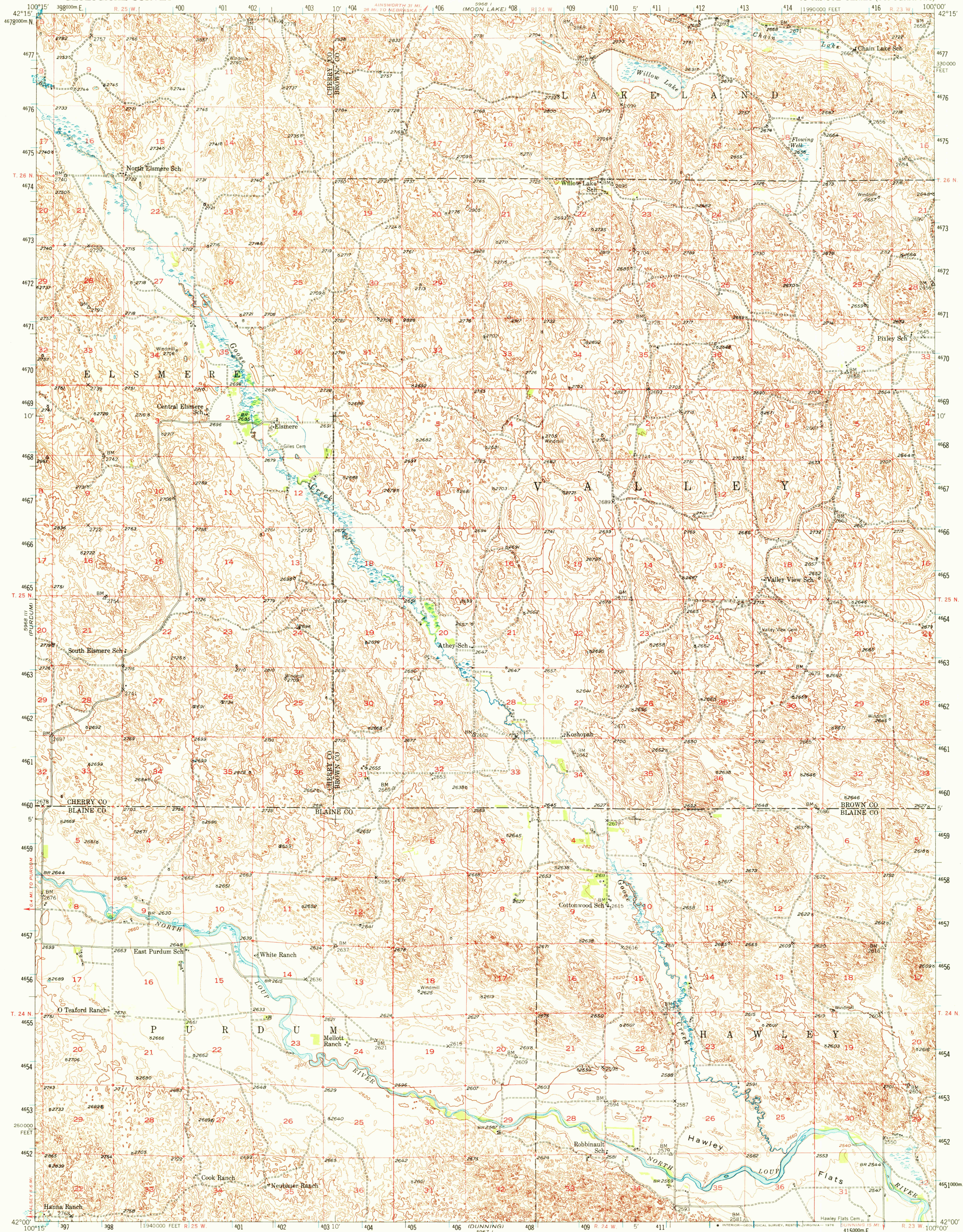


UNITED STATES  
DEPARTMENT OF THE INTERIOR  
GEOLOGICAL SURVEY

KOSHOPAH QUADRANGLE  
NEBRASKA  
15 MINUTE SERIES (TOPOGRAPHIC)



Maped, edited, and published by the Geological Survey  
as part of the Department of the Interior program  
for the development of the Missouri River Basin  
Control by USGS and USC&GS  
Topography from aerial photographs by multiplex methods  
Aerial photographs taken 1946. Field check 1949  
Polyconic projection. 1927 North American datum  
10,000-foot grid based on Nebraska coordinate system,  
north zone  
1000-metre Universal Transverse Mercator grid ticks,  
zone 14, shown in blue

UTM GRID AND 1949 MAGNETIC NORTH  
DECLINATION AT CENTER OF SHEET



CONTOUR INTERVAL 20 FEET  
DOTTED LINES REPRESENT 10-FOOT CONTOURS  
NATIONAL GEODETIC VERTICAL DATUM OF 1929

THIS MAP COMPLIES WITH NATIONAL MAP ACCURACY STANDARDS  
FOR SALE BY U.S. GEOLOGICAL SURVEY, DENVER, COLORADO 80225, OR RESTON, VIRGINIA 22092  
A FOLDER DESCRIBING TOPOGRAPHIC MAPS AND SYMBOLS IS AVAILABLE ON REQUEST

ROAD CLASSIFICATION  
HARD-SURFACE ALL WEATHER ROADS DRY WEATHER ROADS  
Heavy-duty ——— Improved dirt ———  
Medium-duty ——— Unimproved dirt ———  
Loose-surface, graded, or narrow hard-surface ———  
U. S. Route ——— State Route ———

KOSHOPAH, NEBR.  
N4200-W10000/15

1949  
AMS 5968 II—SERIES V775