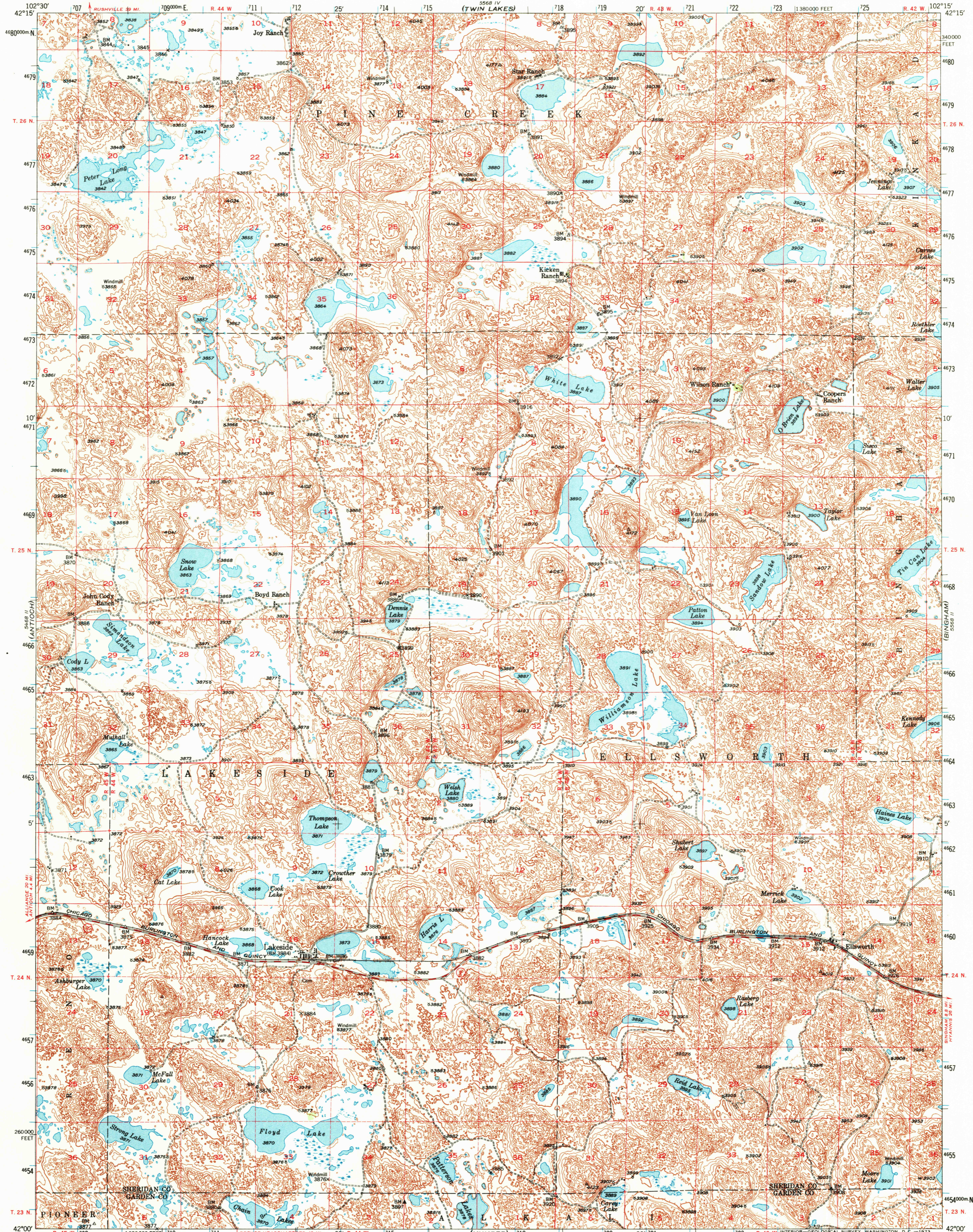
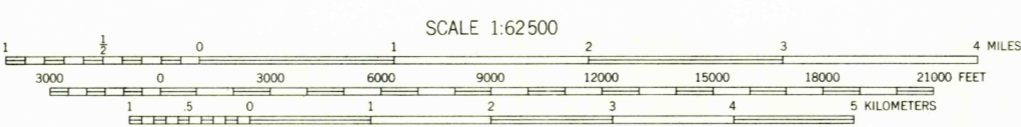
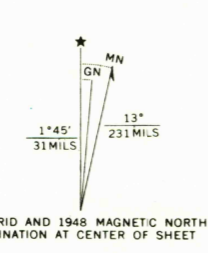


UNITED STATES
DEPARTMENT OF THE INTERIOR
GEOLOGICAL SURVEY

LAKESIDE QUADRANGLE
NEBRASKA
15 MINUTE SERIES (TOPOGRAPHIC)



Mapped, edited, and published by the Geological Survey as part of the Department of the Interior program for the development of the Missouri River Basin. Control by USGS and USC&GS. Topography from aerial photographs by multiplex methods. Aerial photographs taken 1946. Field check 1948. Polyconic projection. 1927 North American datum, 10,000-foot grid based on Nebraska coordinate system, north zone. Dashed land lines indicate approximate location. 1000-meter Universal Transverse Mercator grid ticks, zone 13, shown in blue.



CONTOUR INTERVAL 20 FEET
DOTTED LINES REPRESENT HALF-INTERVAL CONTOURS
DATUM IS MEAN SEA LEVEL

THIS MAP COMPLIES WITH NATIONAL MAP ACCURACY STANDARDS
FOR SALE BY U. S. GEOLOGICAL SURVEY, DENVER, COLORADO 80225 OR WASHINGTON, D. C. 20242
A FOLDER DESCRIBING TOPOGRAPHIC MAPS AND SYMBOLS IS AVAILABLE ON REQUEST

ROAD CLASSIFICATION
HARD-SURFACE ALL WEATHER ROADS
DRY WEATHER ROADS
IMPROVED DIRT
UNIMPROVED DIRT
U. S. ROUTE
STATE ROUTE

LAKESIDE, NEBR.
N4200-W10215/15
1948
AMS 5568 III-SERIES V775

USGS
Historical File
Topographic Division

1095