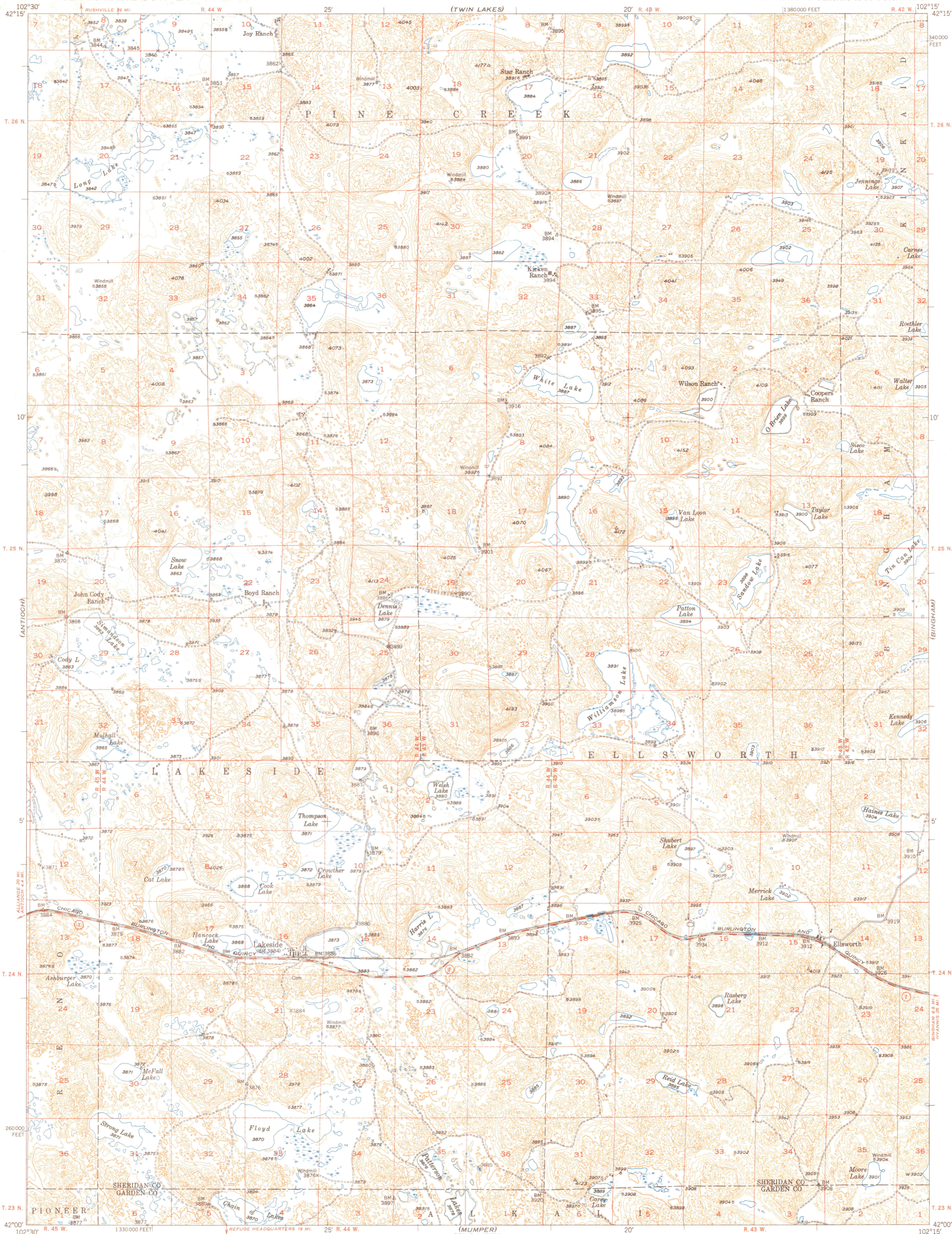
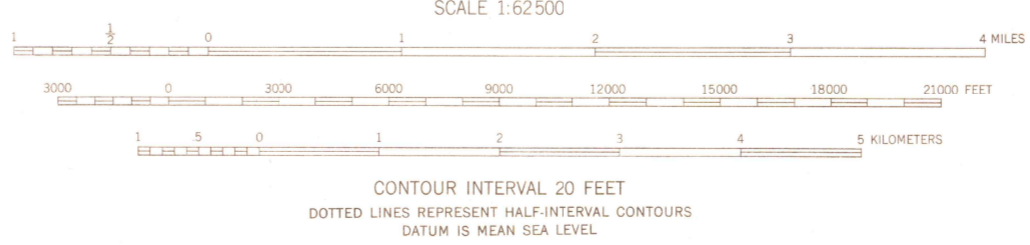


UNITED STATES
DEPARTMENT OF THE INTERIOR
GEOLOGICAL SURVEY

LAKESIDE QUADRANGLE
NEBRASKA
15 MINUTE SERIES (TOPOGRAPHIC)



Mapped, edited, and published by the Geological Survey as part of the Department of the Interior program for the development of the Missouri River Basin Control by USGS and USC&GS
Topography from aerial photographs by multiplex methods
Aerial photographs taken 1946. Field check 1948
Polyconic projection. 1927 North American datum
10,000-foot grid based on Nebraska coordinate system, north zone
Dashed land lines indicate approximate location



ROAD CLASSIFICATION

HARD-SURFACE ALL WEATHER ROADS	DRY WEATHER ROADS
Heavy-duty ——— 4-LANE LANE	Improved dirt ———
Medium-duty ——— 4-LANE LANE	Unimproved dirt ———
Loose-surface, graded, or narrow hard-surface ———	
U. S. Route	State Route

LAKESIDE, NEBR.
N4200—W10215/15

FOR SALE BY U. S. GEOLOGICAL SURVEY, FEDERAL CENTER, DENVER, COLORADO OR WASHINGTON 25, D. C.
A FOLDER DESCRIBING TOPOGRAPHIC MAPS AND SYMBOLS IS AVAILABLE ON REQUEST

EDITION OF 1950

BELOIT COLLEGE LIBRARIES
BELOIT, WISCONSIN