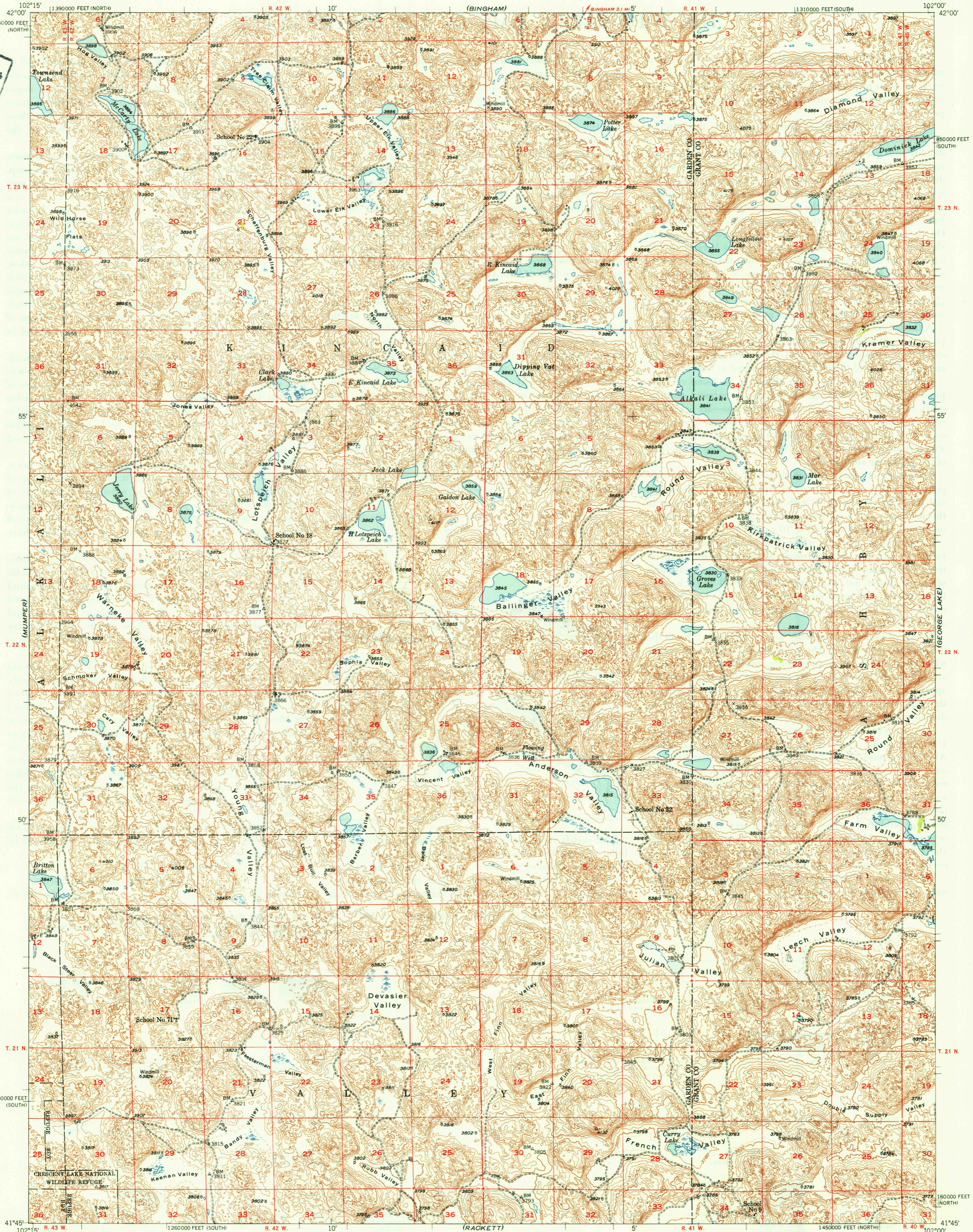


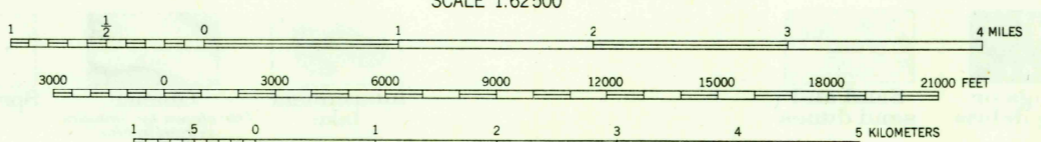
UNITED STATES
DEPARTMENT OF THE INTERIOR
GEOLOGICAL SURVEY

LONGFELLOW LAKE QUADRANGLE
NEBRASKA
15 MINUTE SERIES (TOPOGRAPHIC)

U.S.G.S.
FILE COPY
Inspection and Mailing



Mapped, edited and published by the Geological Survey as part of the Department of the Interior program for the development of the Missouri River Basin Control by USGS and USC&GS
Topography from aerial photographs by multiplex methods
Aerial photographs taken 1946. Field check 1948
Polyconic projection. 1927 North American datum
10,000-foot grids based on Nebraska coordinate system, north and south zones



ROAD CLASSIFICATION
 HARD-SURFACE ALL WEATHER ROADS DRY WEATHER ROADS
 Heavy-duty ——— 1 LANE 16 LANE Improved dirt
 Medium-duty ——— 4 LANE 6 LANE Unimproved dirt
 Loose-surface, graded, or narrow hard-surface - - - - -
 U.S. Route State Route

U.S.G.S.
FILE COPY
Inspection and Mailing

LONGFELLOW LAKE, NEBR.
N4145-W10200/15
EDITION OF 1950

USGS
Historical File
Topographic Division

THIS MAP COMPLIES WITH NATIONAL MAP ACCURACY STANDARDS
FOR SALE BY U. S. GEOLOGICAL SURVEY, DENVER, COLORADO OR WASHINGTON 25, D. C.