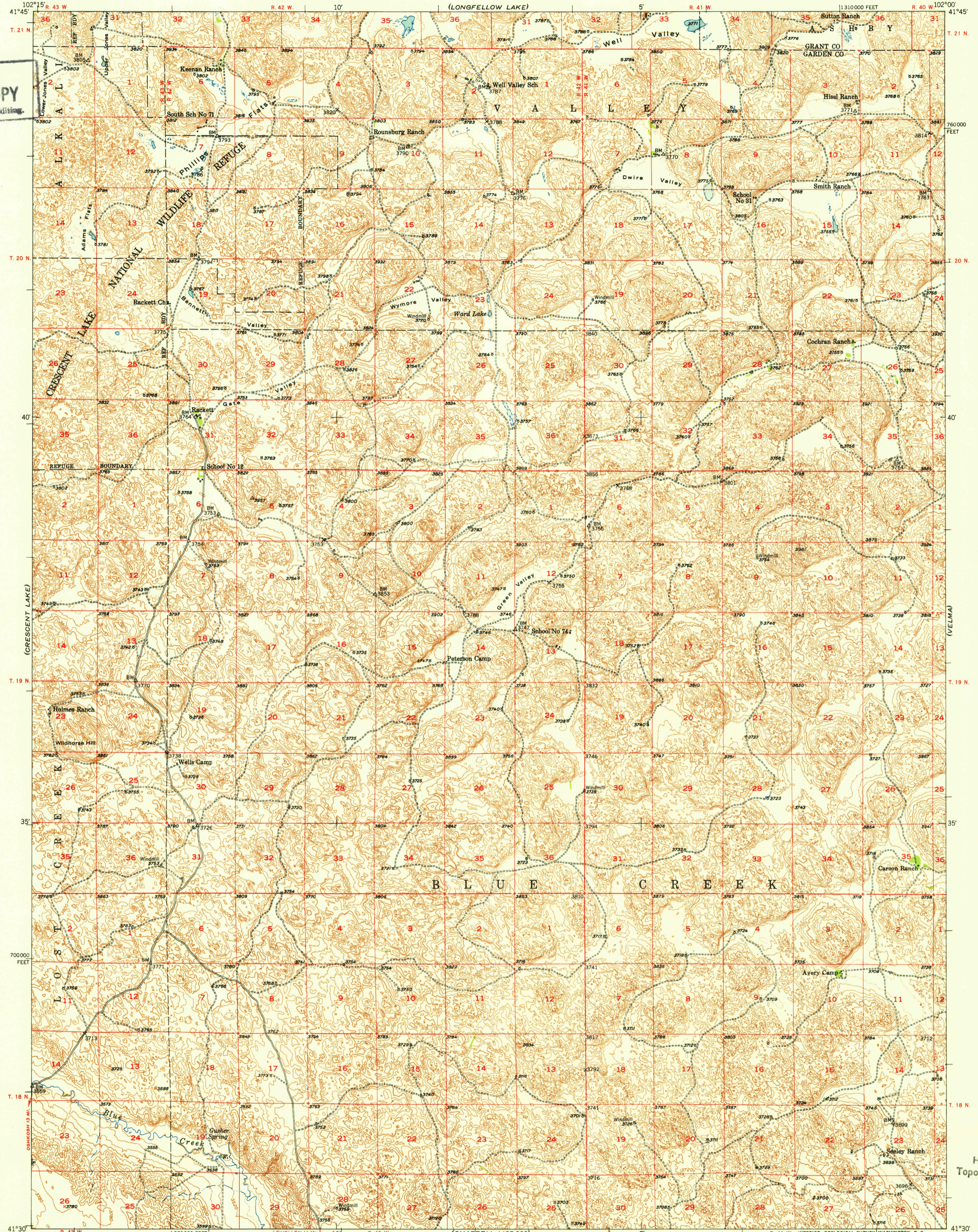


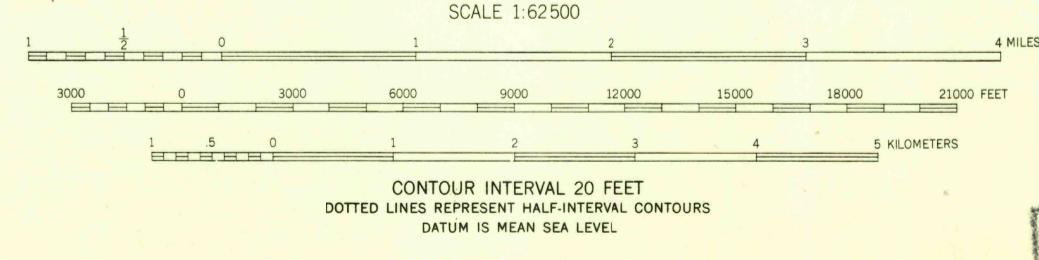
UNITED STATES  
DEPARTMENT OF THE INTERIOR  
GEOLOGICAL SURVEY

RACKETT QUADRANGLE  
NEBRASKA  
15 MINUTE SERIES (TOPOGRAPHIC)

U.S.G.S.  
FILE COPY  
Inspection and Editing.



Mapped, edited, and published by the Geological Survey as part of the Department of the Interior program for the development of the Missouri River Basin  
Control by USGS and USC&GS  
Topography from aerial photographs by multiplex methods  
Aerial photographs taken 1946. Field check 1949  
Polyconic projection. 1927 North American datum  
10,000-foot grid based on Nebraska coordinate system, south zone



ROAD CLASSIFICATION  
 HARD-SURFACE ALL WEATHER ROADS DRY WEATHER ROADS  
 Heavy-duty ——— LANE IS LANE Improved dirt ———  
 Medium-duty ——— LANE IS LANE Unimproved dirt ———  
 Loose-surface, graded, or narrow hard-surface ———  
 U. S. Route □ State Route ○

U.S.G.S.  
FILE COPY  
Inspection and Editing.

RACKETT, NEBR.  
N4130-W10200/15  
EDITION OF 1951

THIS MAP COMPLIES WITH NATIONAL MAP ACCURACY STANDARDS  
FOR SALE BY U. S. GEOLOGICAL SURVEY, FEDERAL CENTER, DENVER, COLORADO OR WASHINGTON 25, D. C.  
A FOLDER DESCRIBING TOPOGRAPHIC MAPS AND SYMBOLS IS AVAILABLE ON REQUEST