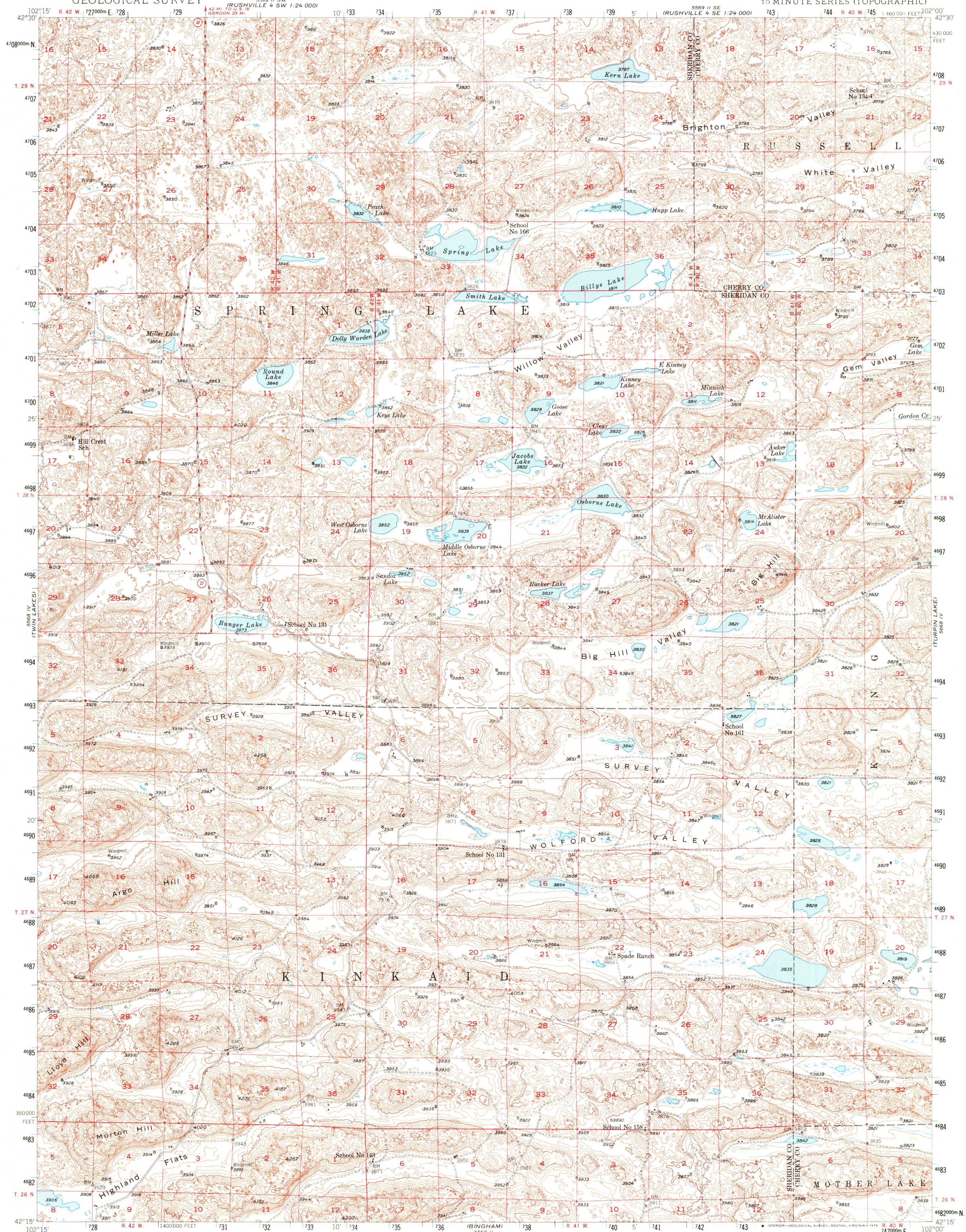
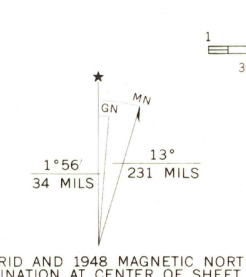


UNITED STATES
DEPARTMENT OF THE INTERIOR
GEOLOGICAL SURVEY

SPADE RANCH QUADRANGLE
NEBRASKA
15 MINUTE SERIES (TOPOGRAPHIC)



Mapped, edited, and published by the Geological Survey
as part of the Department of the Interior program
for the development of the Missouri River Basin
Control by USGS and USC&GS
Topography from aerial photographs by multiplex methods
Aerial photographs taken 1946 Field check 1948
Polyconic projection. 1927 North American datum
10,000-foot grid based on Nebraska coordinate system,
north zone
1000-metre Universal Transverse Mercator grid ticks,
zone 13, shown in blue



CONTOUR INTERVAL 20 FEET
DOTTED LINES REPRESENT 10-FOOT CONTOURS
NATIONAL GEODETIC VERTICAL DATUM OF 1929

THIS MAP COMPLIES WITH NATIONAL MAP ACCURACY STANDARDS
FOR SALE BY U.S. GEOLOGICAL SURVEY, DENVER, COLORADO 80225, OR RESTON, VIRGINIA 22092
A FOLDER DESCRIBING TOPOGRAPHIC MAPS AND SYMBOLS IS AVAILABLE ON REQUEST

ROAD CLASSIFICATION
HARD SURFACE ALL WEATHER ROADS DRY WEATHER ROADS
Heavy-duty ———— 4 LANE 6 LANE Improved dirt
Medium-duty ———— 4 LANE 6 LANE Unimproved dirt
Loose surface, graded, or narrow hard-surface
□ U. S. Route ○ State Route

SPADE RANCH, NEBR.
N4215-W10200/15

1948

AMS 5568 I—SERIES V775