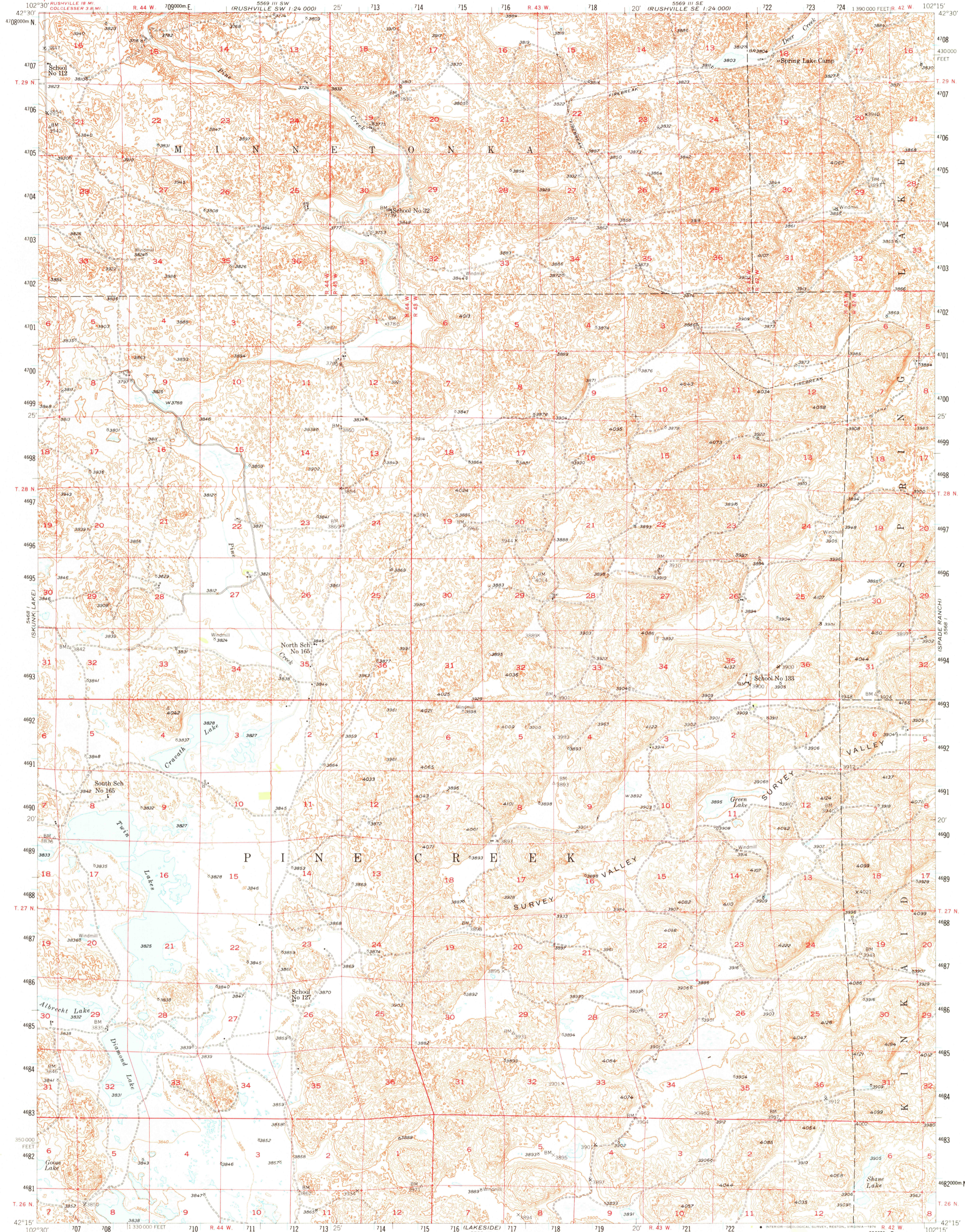
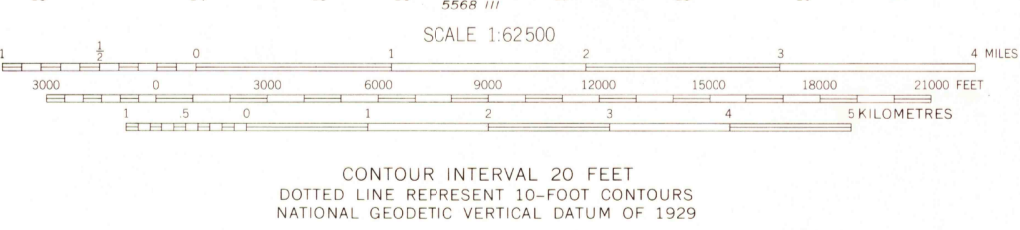
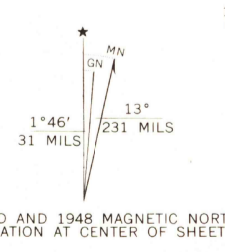


UNITED STATES
DEPARTMENT OF THE INTERIOR
GEOLOGICAL SURVEY

TWIN LAKES QUADRANGLE
NEBRASKA-SHERIDAN CO.
15 MINUTE SERIES (TOPOGRAPHIC)



Mapped, edited, and published by the Geological Survey as part of the Department of the Interior program for the development of the Missouri River Basin. Control by USGS and USC&GS. Topography from aerial photographs by multiplex methods. Aerial photographs taken 1946. Field check 1948. Polyconic projection. 1927 North American datum. 10,000-foot grid based on Nebraska coordinate system, north zone. 1000-metre Universal Transverse Mercator grid ticks, zone 13, shown in blue.



CONTOUR INTERVAL 20 FEET
DOTTED LINE REPRESENT 10-FOOT CONTOURS
NATIONAL GEODETIC VERTICAL DATUM OF 1929

ROAD CLASSIFICATION
HARD-SURFACE ALL WEATHER ROADS
HEAVY-DUTY
MEDIUM-DUTY
LOOSE-SURFACE, GRADED, OR NARROW HARD-SURFACE
U. S. Route
Slate Route

TWIN LAKES, NEBR.
N4215-W10215/15

THIS MAP COMPLIES WITH NATIONAL MAP ACCURACY STANDARDS
FOR SALE BY U. S. GEOLOGICAL SURVEY, DENVER, COLORADO 80225, OR RESTON, VIRGINIA 22092
A FOLDER DESCRIBING TOPOGRAPHIC MAPS AND SYMBOLS IS AVAILABLE ON REQUEST

1948

AMS 5568 IV—SERIES V775