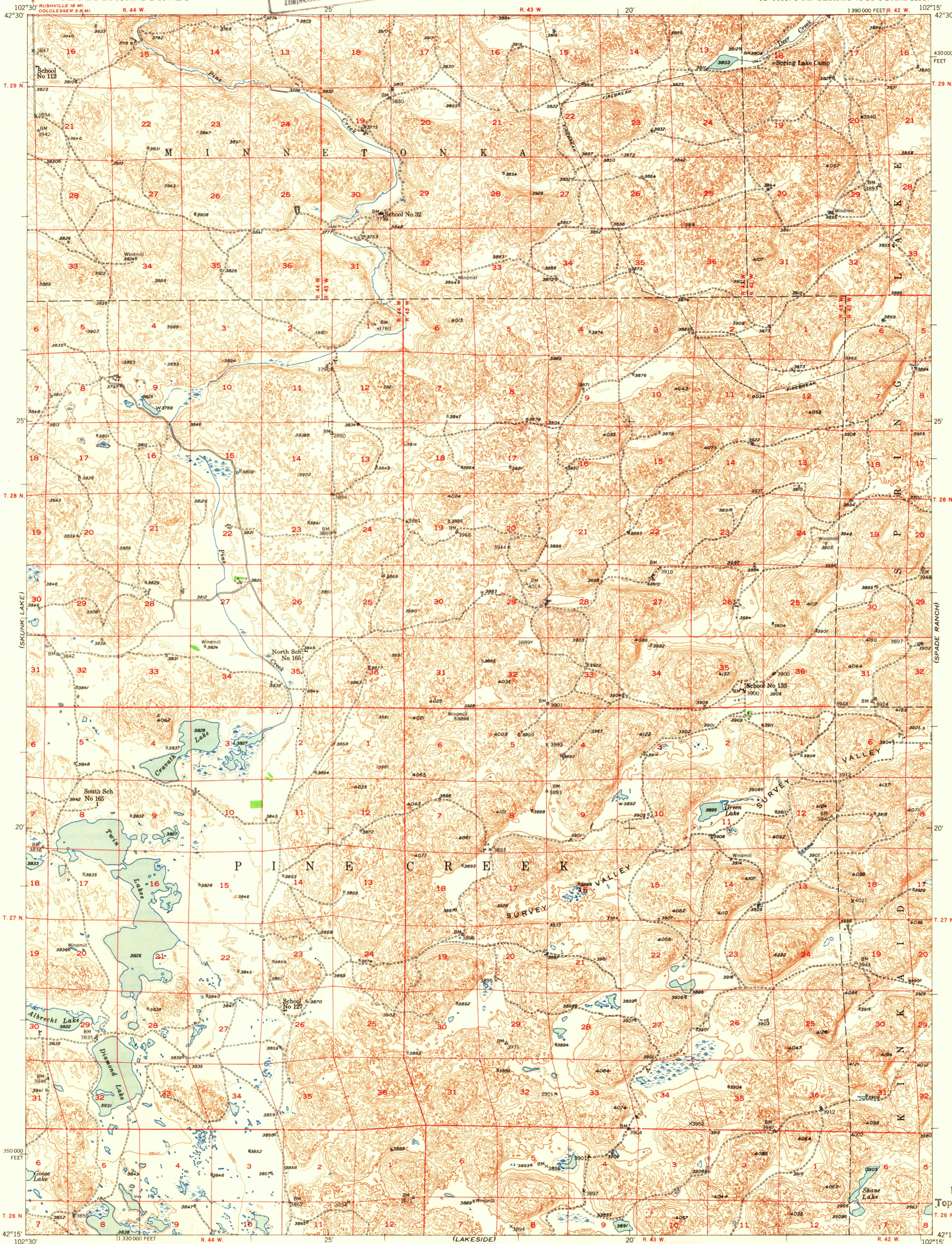
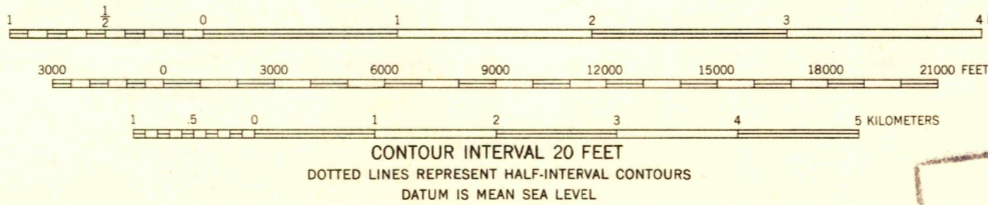


U.S.G.S.
FILE COPY
Inspection and Editing.



Maped, edited, and published by the Geological Survey as part of the Department of the Interior program for the development of the Missouri River Basin Control by USGS and USC&GS
Topography from aerial photographs by multiplex methods
Aerial photographs taken 1946 Field check 1948
Polyconic projection, 1927 North American datum, 10,000-foot grid based on Nebraska coordinate system, north zone



ROAD CLASSIFICATION
HARD-SURFACE ALL WEATHER ROADS DRY WEATHER ROADS
Heavy-duty Improved dirt
Medium-duty Unimproved dirt
Loose-surface, graded, or narrow hard-surface
U. S. Route State Route

TWIN LAKES, NEBR.
N4215-W10215/15

EDITION OF 1950

THIS MAP COMPLIES WITH NATIONAL MAP ACCURACY STANDARDS
FOR SALE BY U. S. GEOLOGICAL SURVEY, DENVER, COLORADO OR WASHINGTON 25, D. C.

U.S.G.S.
FILE COPY
Inspection and Editing.