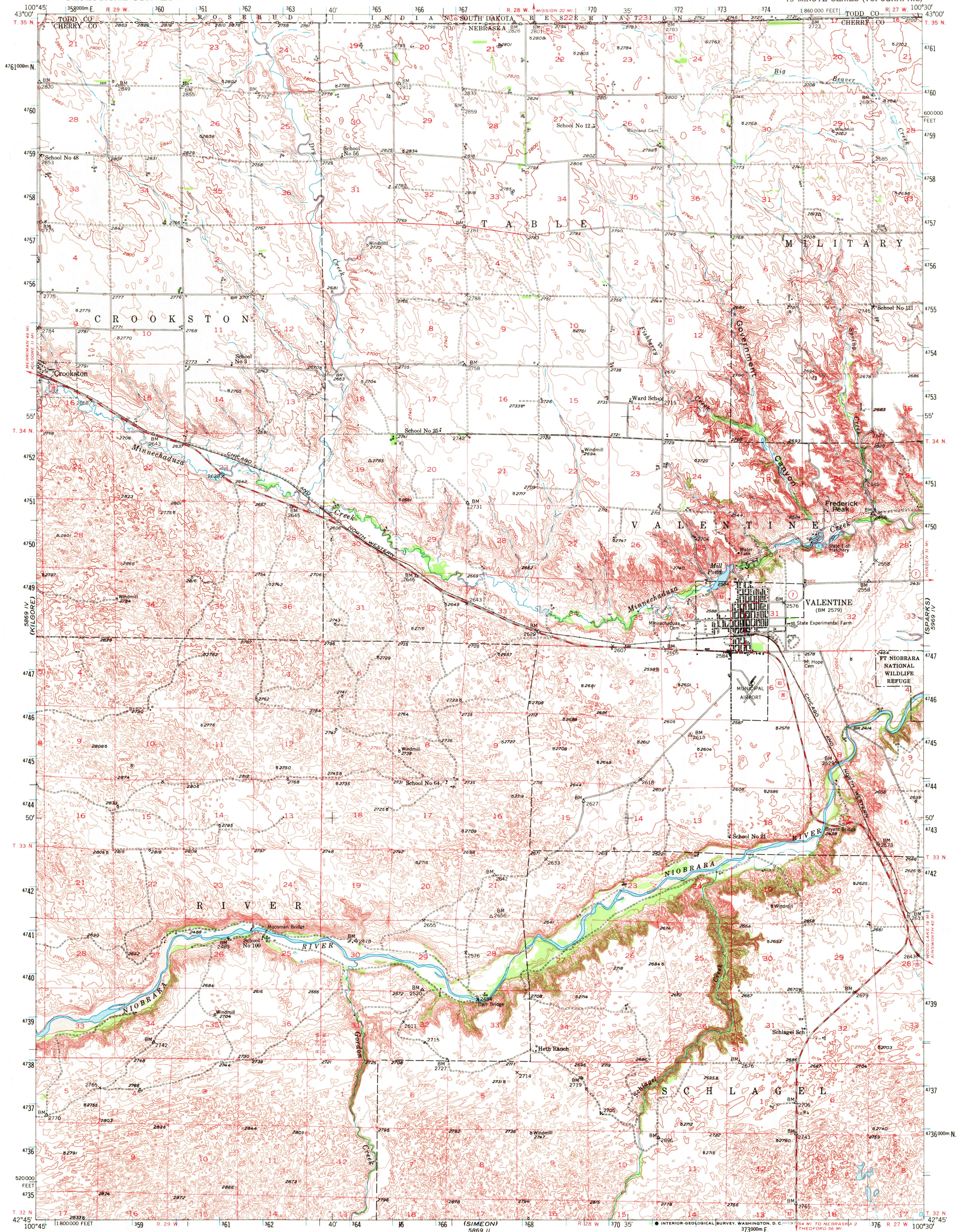
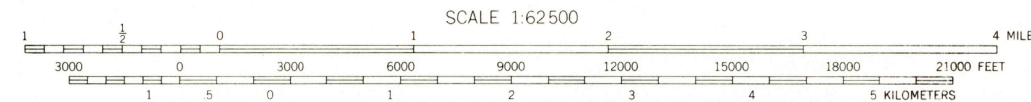
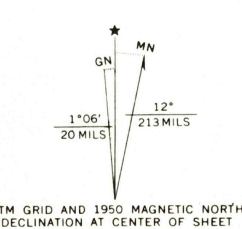


UNITED STATES  
DEPARTMENT OF THE INTERIOR  
GEOLOGICAL SURVEY

VALENTINE QUADRANGLE  
NEBRASKA-SOUTH DAKOTA  
15 MINUTE SERIES (TOPOGRAPHIC)



Mapped, edited, and published by the Geological Survey as part of the Department of the Interior program for the development of the Missouri River Basin Control by USGS and USC&GS  
Topography from aerial photographs by multiplex methods  
Aerial photographs taken 1946. Field check 1950  
Polyconic projection. 1927 North American datum  
10,000-foot grid based on Nebraska coordinate system, north zone  
1000-meter Universal Transverse Mercator grid ticks, zone 14, shown in blue



ROAD CLASSIFICATION  
Heavy-duty... Light-duty...   
Medium-duty... Unimproved dirt...   
U. S. Route State Route

THIS MAP COMPLIES WITH NATIONAL MAP ACCURACY STANDARDS  
FOR SALE BY U. S. GEOLOGICAL SURVEY, DENVER, COLORADO 80225 OR WASHINGTON, D. C. 20242  
A FOLDER DESCRIBING TOPOGRAPHIC MAPS AND SYMBOLS IS AVAILABLE ON REQUEST

VALENTINE, NEBR.-S. DAK.  
N4245-W10030/15

1950  
AMS 5869 I-SERIES V775

USGS  
HISTORICAL FILE  
TOPOGRAPHIC DIVISION

AUG 8 1972