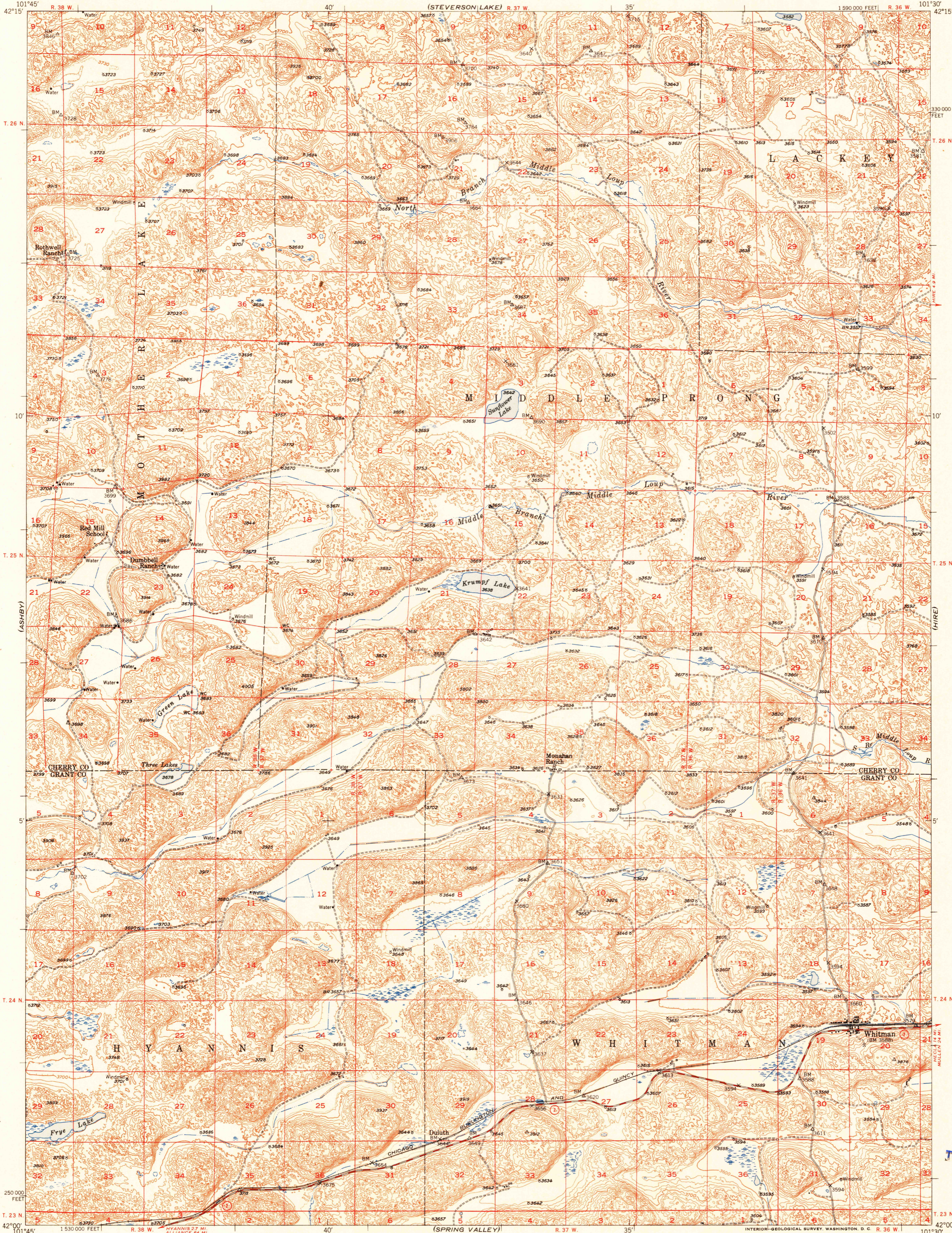


UNITED STATES  
DEPARTMENT OF THE INTERIOR  
GEOLOGICAL SURVEY

U.S.G.S.  
FILE COPY  
Inspection and Billing.

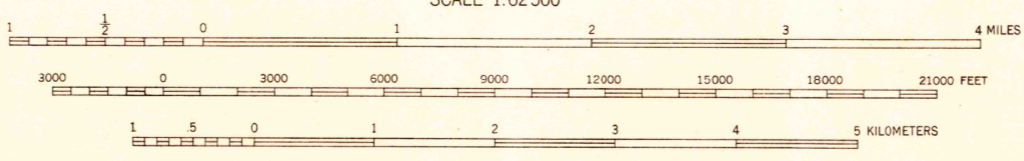
WHITMAN QUADRANGLE  
NEBRASKA  
15 MINUTE SERIES (TOPOGRAPHIC)



Map grid coordinates: 101°45' W, 42°15' N, 40', 35', 1590000 FEET, R. 38 W., R. 37 W., R. 36 W., T. 26 N., T. 25 N., T. 24 N., T. 23 N., 101°30' W.

Mapped, edited, and published by the Geological Survey as part of the Department of the Interior program for the development of the Missouri River Basin Control by USGS and USC&GS  
Topography from aerial photographs by multiple methods  
Aerial photographs taken 1946. Field check 1948  
Polyconic projection. 1927 North American datum  
10,000-foot grid based on Nebraska coordinate system, north zone

APPROXIMATE MEAN  
MAGNETIC NORTH  
DECLINATION, 1948



CONTOUR INTERVAL 20 FEET  
DOTTED LINES REPRESENT HALF-INTERVAL CONTOURS  
DATUM IS MEAN SEA LEVEL

ROAD CLASSIFICATION  
HARD-SURFACE ALL WEATHER ROADS DRY WEATHER ROADS  
Heavy-duty ——— **LANE IS LANE** Improved dirt .....  
Medium-duty ——— **LANE IS LANE** Unimproved dirt .....  
Loose-surface, graded, or narrow hard-surface - - - - -  
U. S. Route      State Route

THIS MAP COMPLIES WITH NATIONAL MAP ACCURACY STANDARDS  
FOR SALE BY U. S. GEOLOGICAL SURVEY, FEDERAL CENTER, DENVER, COLORADO OR WASHINGTON 25, D. C.  
A FOLDER DESCRIBING TOPOGRAPHIC MAPS AND SYMBOLS IS AVAILABLE ON REQUEST

U.S.G.S.  
FILE COPY  
Inspection and Billing.

WHITMAN, NEBR.  
N4200-W10130/15  
EDITION OF 1950

USGS  
Historical File  
Topographic Division

NOV 2 1950 2/15