

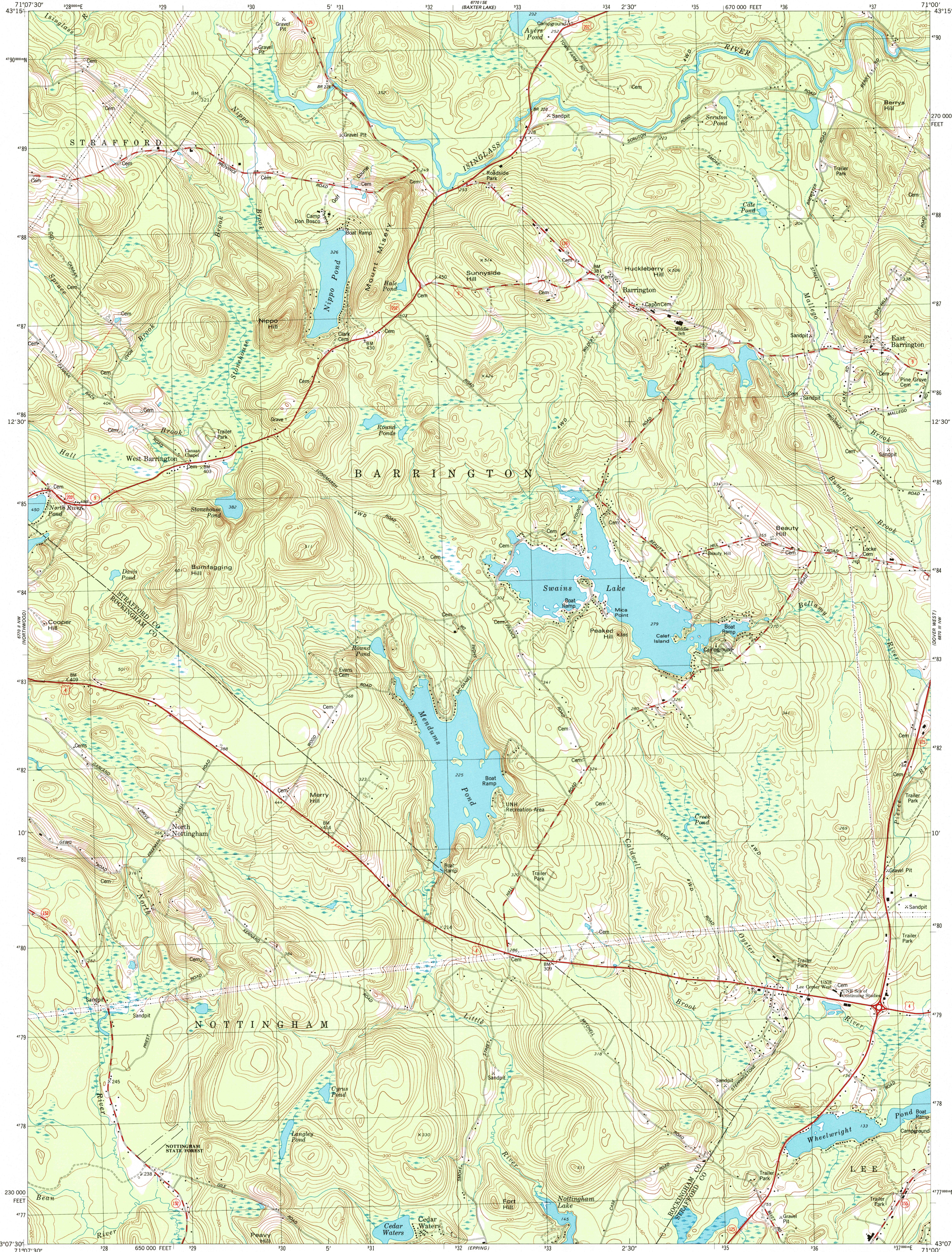


U.S. DEPARTMENT OF THE INTERIOR
U.S. GEOLOGICAL SURVEY



BARRINGTON QUADRANGLE
NEW HAMPSHIRE
7.5 MINUTE SERIES (TOPOGRAPHIC)

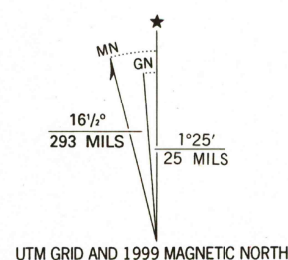
71°07'30" W
43°07'30" N



Produced by the United States Geological Survey
Derived from imagery taken 1975 and other sources. Photomaps
using imagery taken 1995; no major culture or drainage changes
observed. Survey control current as of 1977
Boundaries verified 1999

North American Datum of 1927 (NAD 27). Projection and
10 000-foot ticks. New Hampshire coordinate system
(transverse Mercator)
1000-meter Universal Transverse Mercator grid, zone 19
North American Datum of 1983 (NAD 83) is shown by dashed
corner ticks. The values of the shift between NAD 27 and NAD 83
for 7.5-minute intersections are obtainable from National Geodetic
Survey NADCON software

There may be private inholdings within the boundaries of
the National or State reservations shown on this map



SCALE 1:24 000

1 1000 0 1000 2000 3000 4000 5000 6000 7000 FEET

1 0.5 0 0.5 1 KILOMETER

CONTOUR INTERVAL 10 FEET

NATIONAL GEODETIC DATUM OF 1929

TO CONVERT FROM FEET TO METERS, MULTIPLY BY 0.3048



ROAD CLASSIFICATION
Primary highway, hard surface
Secondary highway, hard surface
Unimproved road
Interstate Route
U. S. Route
State Route

BARRINGTON, N. H.

1995

NIMA 6770 II NE-SERIES V812

THIS MAP COMPLIES WITH NATIONAL MAP ACCURACY STANDARDS
FOR SALE BY U.S. GEOLOGICAL SURVEY, P.O. BOX 25286, DENVER, COLORADO 80225
A FOLDER DESCRIBING TOPOGRAPHIC MAPS AND SYMBOLS IS AVAILABLE ON REQUEST

RECEIVED
DEC 31 1999
USGS AND
HISTORICAL MAP ARCHIVES

RECEIVED
DEC 31 1999
USGS AND
HISTORICAL MAP ARCHIVES

