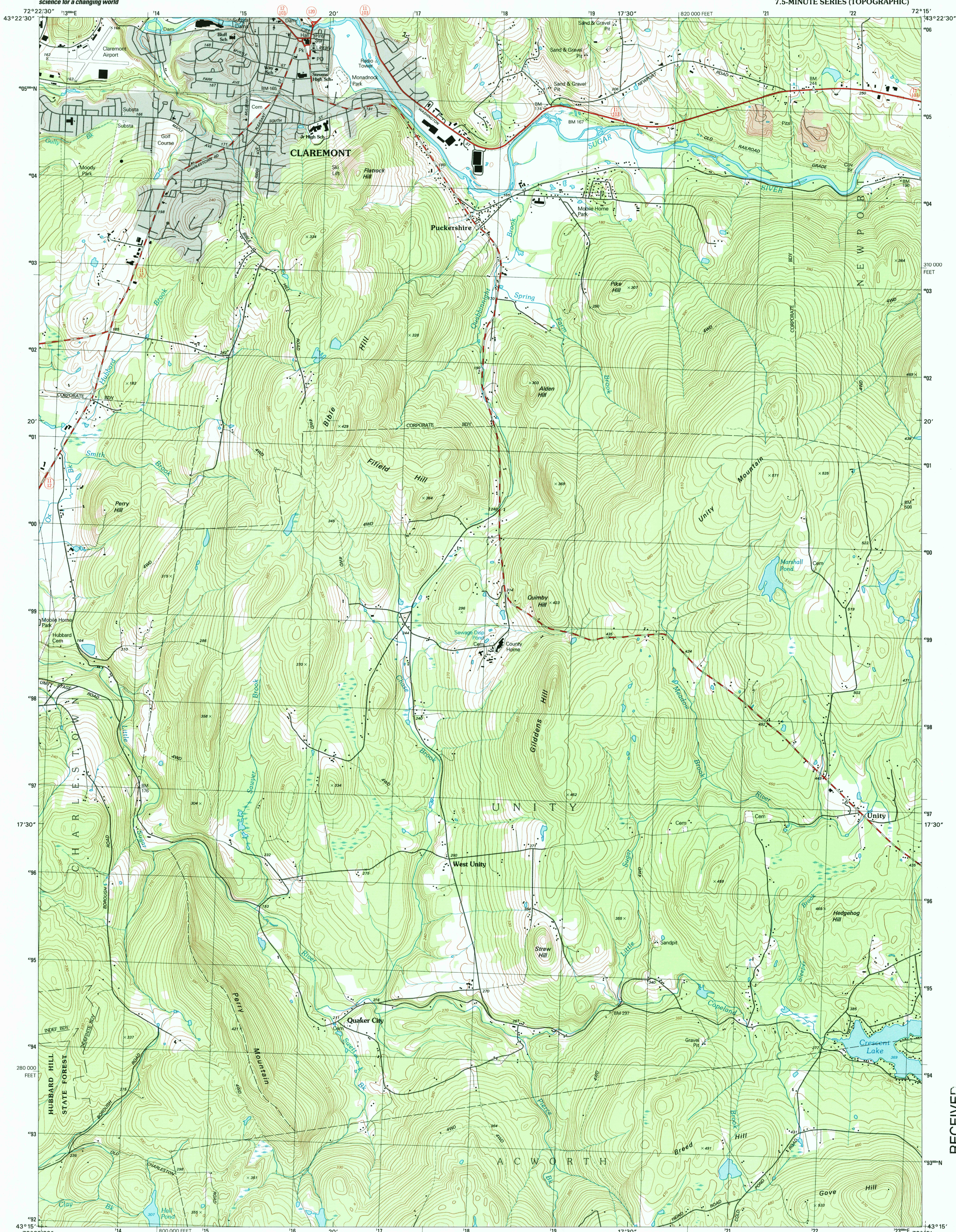


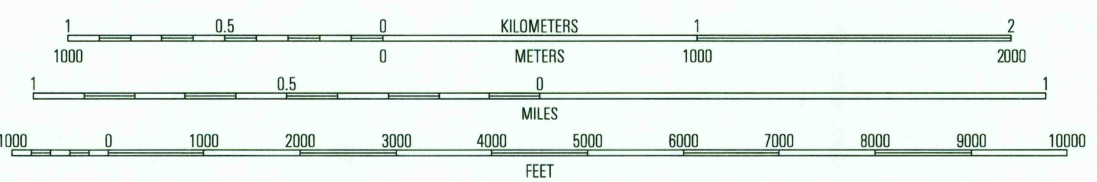
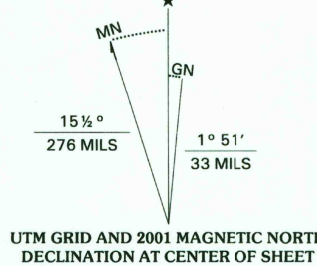


U.S. DEPARTMENT OF THE INTERIOR
U.S. GEOLOGICAL SURVEY

CLAREMONT SOUTH QUADRANGLE
NEW HAMPSHIRE-SULLIVAN CO.
7.5-MINUTE SERIES (TOPOGRAPHIC)



Produced by the United States Geological Survey
Topography compiled 1998. Planimetry derived from imagery taken 1998 and other sources. Survey control current as of 1980. Boundaries current as of 2001.
North American Datum of 1983 (NAD 83). Projection and 1000-meter grid: Universal Transverse Mercator, zone 18. 10 000-foot ticks: New Hampshire Coordinate System of 1983.
North American Datum of 1927 (NAD 27) is shown by dashed corner ticks. The values of the shift between NAD 83 and NAD 27 for 7.5-minute intersections are obtainable from National Geodetic Survey NADCON software.
There may be private inholdings within the boundaries of the National or State reservations shown on this map.
Houses of worship, schools, and other labeled buildings verified 1980.



CONTOUR INTERVAL 6 METERS
NATIONAL GEODETIC VERTICAL DATUM OF 1929
TO CONVERT FROM METERS TO FEET, MULTIPLY BY 3.2808



ROAD CLASSIFICATION
Primary highway hard surface Light-duty road, hard or improved surface
Secondary highway hard surface Unimproved road
Interstate Route U.S. Route State Route

1	2	3
4	5	6
7	8	9

CLAREMONT SOUTH, NH
1998

NIMA 6570 IV SE-SERIES V812

RECEIVED
JUL 31 2002

USGS NH
HISTORICAL MAP ARCHIVE

