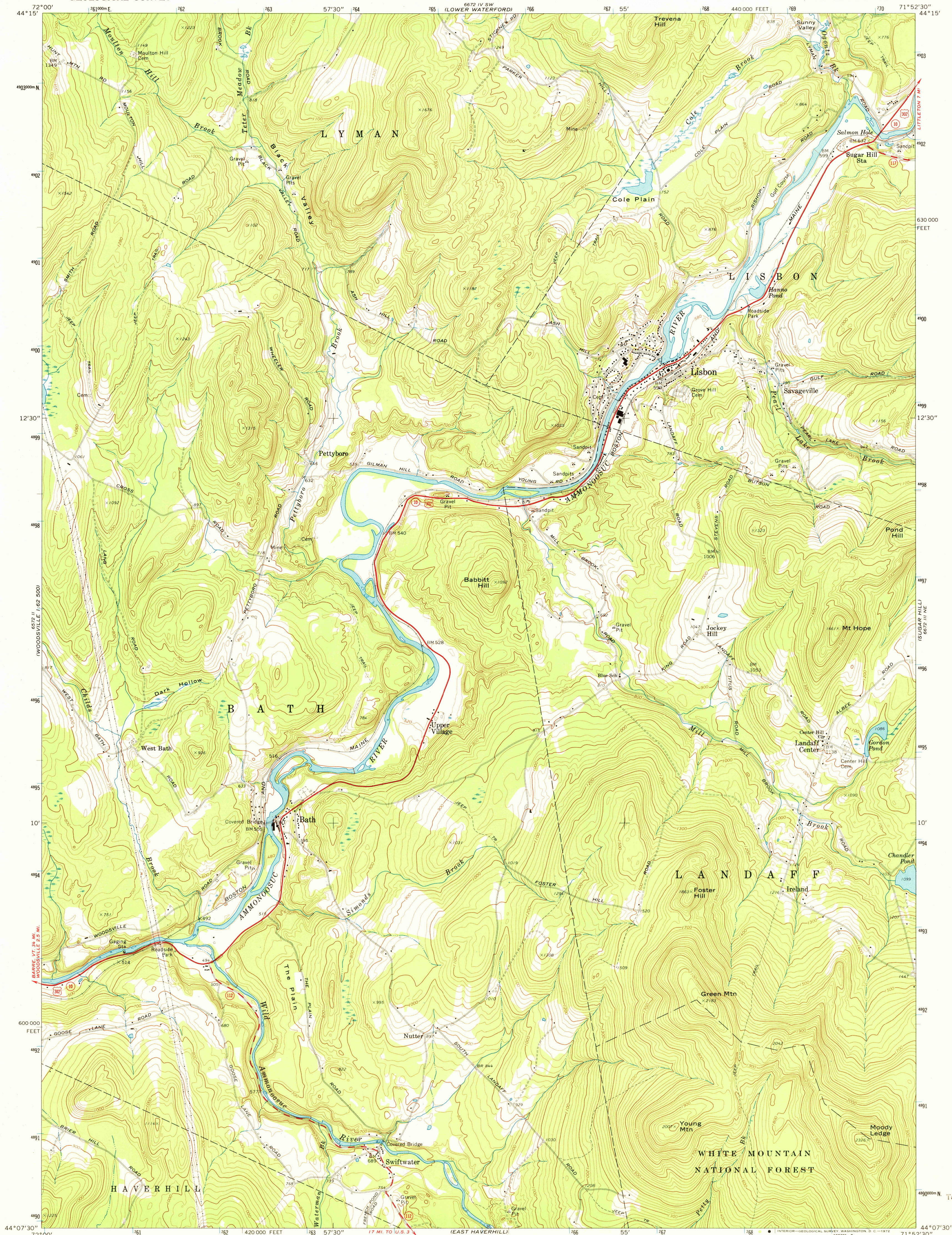


UNITED STATES
DEPARTMENT OF THE INTERIOR
GEOLOGICAL SURVEY

LISBON QUADRANGLE
NEW HAMPSHIRE—GRAFTON CO.
7.5 MINUTE SERIES (TOPOGRAPHIC)
NW 1/4 MOOSILAUKE 15' QUADRANGLE



Mapped, edited, and published by the Geological Survey
Control by USGS and USC&GS
Topography by photogrammetric methods from aerial photographs
taken 1964. Field checked 1967
Polyconic projection. 1927 North American datum
10,000-foot grid based on New Hampshire coordinate system
1000-meter Universal Transverse Mercator grid ticks, zone 19,
shown in blue

SCALE 1:24,000
CONTOUR INTERVAL 20 FEET
DATUM IS MEAN SEA LEVEL

ROAD CLASSIFICATION
Primary highway, hard surface
Secondary highway, hard surface
Unimproved road
Interstate Route
U. S. Route
State Route

LISBON, N. H.
NW 1/4 MOOSILAUKE 15' QUADRANGLE
N4407.5—W7152.5/7.5
1967
AMS 6672 III NW—SERIES V812

NOV 13 1972
3370