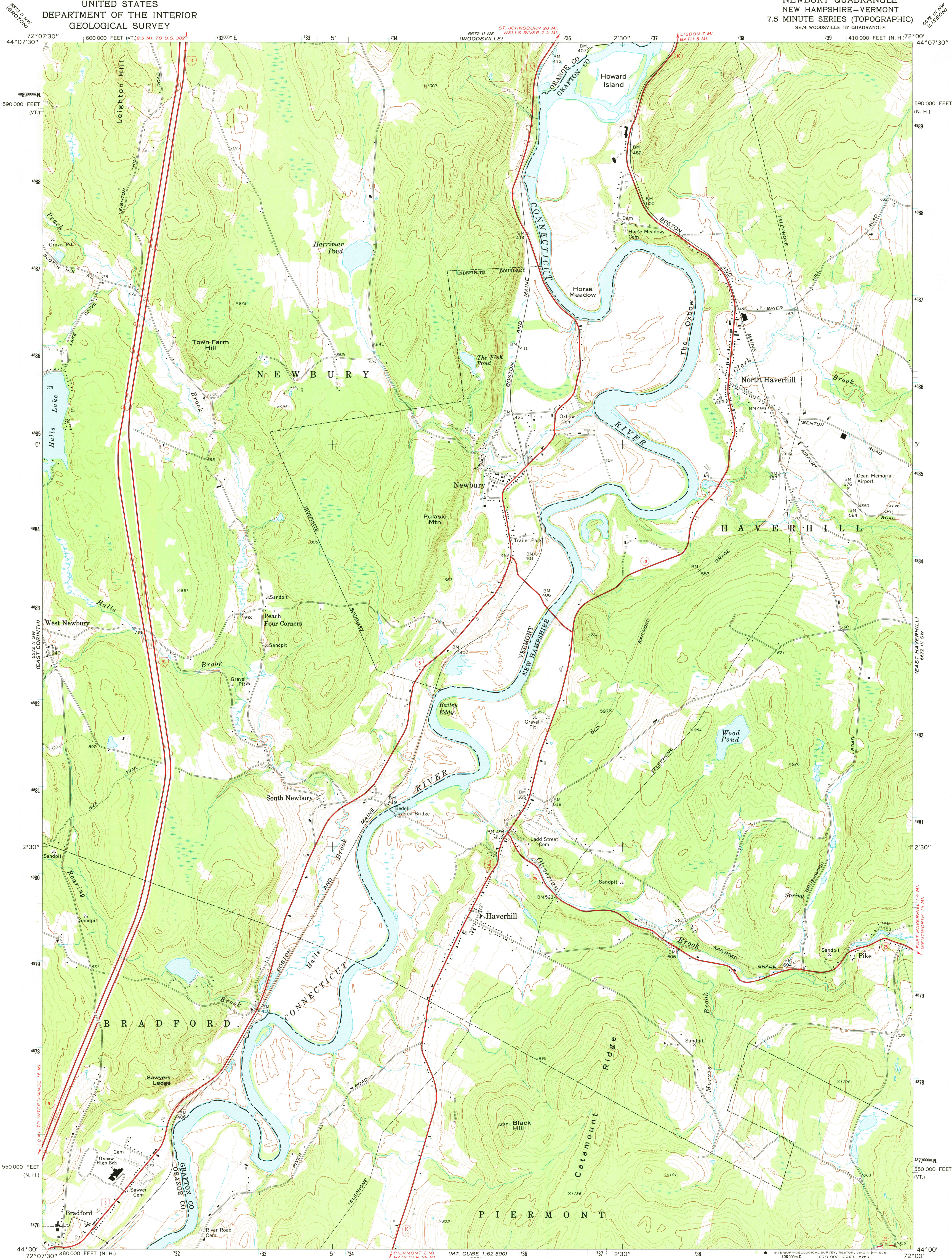
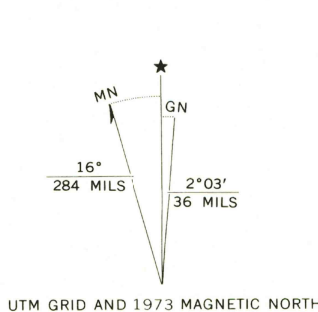


UNITED STATES
DEPARTMENT OF THE INTERIOR
GEOLOGICAL SURVEY

NEWBURY QUADRANGLE
NEW HAMPSHIRE-VERMONT
7.5 MINUTE SERIES (TOPOGRAPHIC)
SE/4 WOODSVILLE 15' QUADRANGLE



Maped, edited, and published by the Geological Survey
Control by USGS and NOS/NOAA
Topography by photogrammetric methods from aerial photographs
taken 1971. Field checked 1973
Projection: New Hampshire coordinate system
(transverse Mercator)
10,000-foot grid ticks based on New Hampshire and
Vermont coordinate systems
1000-metre Universal Transverse Mercator grid ticks,
zone 18, shown in blue. 1927 North American datum
Fine red dashed lines indicate selected fence and field lines where
generally visible on aerial photographs. This information is unchecked



THIS MAP COMPLIES WITH NATIONAL MAP ACCURACY STANDARDS
FOR SALE BY U.S. GEOLOGICAL SURVEY, RESTON, VIRGINIA 22092
A FOLDER DESCRIBING TOPOGRAPHIC MAPS AND SYMBOLS IS AVAILABLE ON REQUEST

ROAD CLASSIFICATION
Primary highway, hard surface
Secondary highway, hard surface
Light duty road, hard or improved surface
Unimproved road
Interstate Route
U.S. Route
State Route

NEWBURY, N. H.-VT.
SE/4 WOODSVILLE 15' QUADRANGLE
N4400-W7200/7.5

1973
AMS 6572 II SE-SERIES V812



USGS
Historical File
Topographic Division

MAY 2 1975