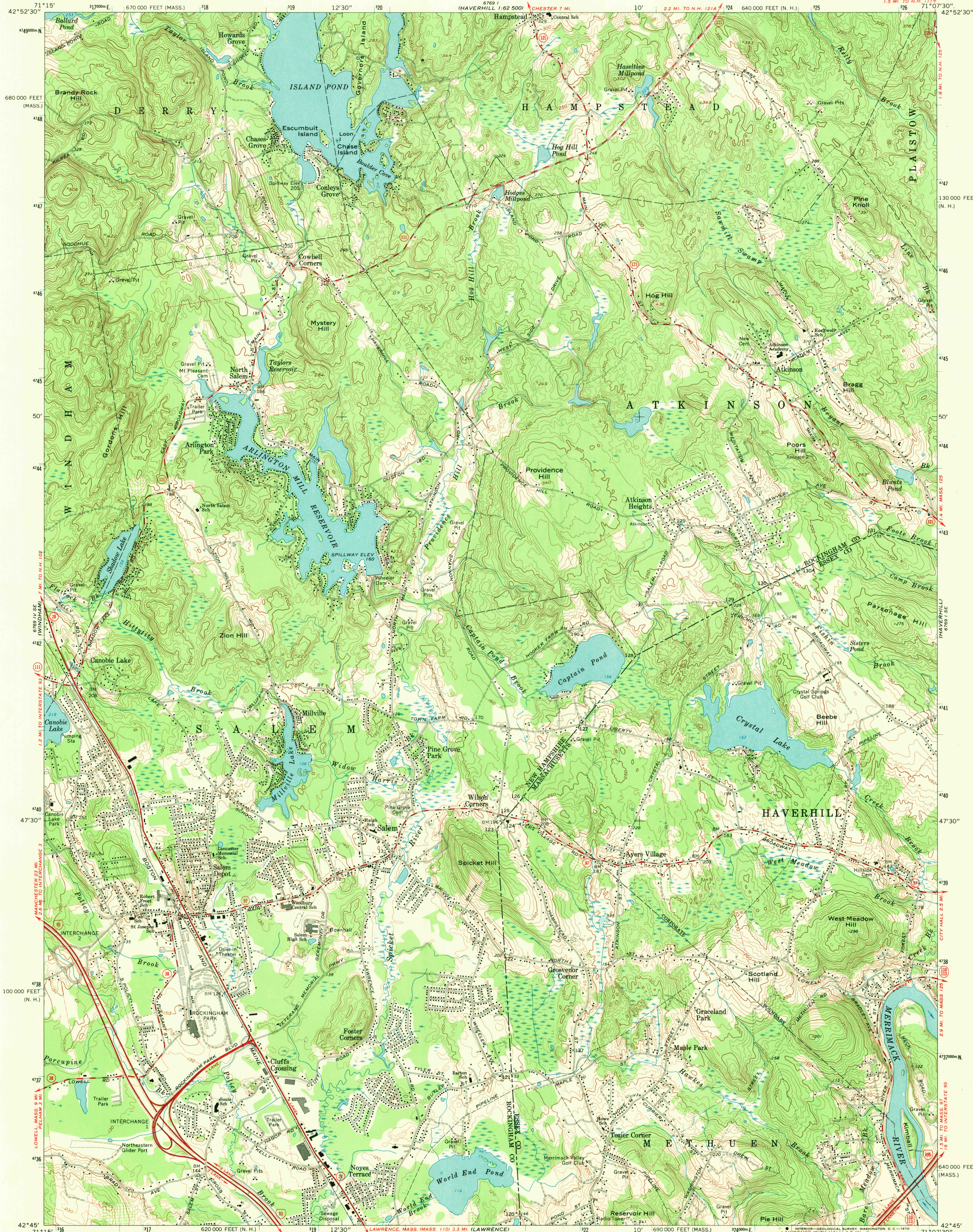
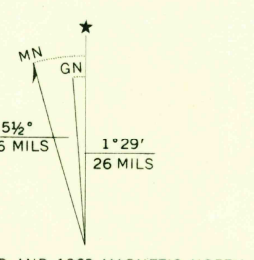


UNITED STATES  
DEPARTMENT OF THE INTERIOR  
GEOLOGICAL SURVEY

SALEM DEPOT QUADRANGLE  
NEW HAMPSHIRE—MASSACHUSETTS  
7.5 MINUTE SERIES (TOPOGRAPHIC)



Mapped, edited, and published by the Geological Survey in cooperation with Massachusetts Department of Public Works  
Control by USGS, USC&GS, New Hampshire Geodetic Survey, and Massachusetts Geodetic Survey  
Topography in New Hampshire by photogrammetric methods from aerial photographs taken 1953. Field checked 1954-1955  
Topography in Massachusetts by planimetric surveys 1942  
Revised from aerial photographs taken 1966. Field checked 1968  
Polyconic projection. 1927 North American datum  
10,000-foot grids based on New Hampshire coordinate system and Massachusetts coordinate system, mainland zone  
1000-meter Universal Transverse Mercator grid ticks, zone 19, shown in blue  
Fine red dashed lines indicate selected fence and field lines where generally visible on aerial photographs. This information is unchecked



SCALE 1:24,000  
CONTOUR INTERVAL 10 FEET  
DATUM IS MEAN SEA LEVEL

THIS MAP COMPLIES WITH NATIONAL MAP ACCURACY STANDARDS  
FOR SALE BY U.S. GEOLOGICAL SURVEY, WASHINGTON, D.C. 20242  
A FOLDER DESCRIBING TOPOGRAPHIC MAPS AND SYMBOLS IS AVAILABLE ON REQUEST

ROAD CLASSIFICATION  
Primary highway, all weather, hard surface  
Secondary highway, all weather, hard surface  
Light-duty road, all weather, improved surface  
Unimproved road, fair or dry weather  
Interstate Route  
State Route

SALEM DEPOT, N.H.—MASS.  
(FORMERLY AYERS VILLAGE)  
SW/4 HAVERHILL 15' QUADRANGLE  
N4245—W7107.5/7.5  
1968  
AMS 6769 1 SW—SERIES V812

U.S.G.S.  
FILE COPY  
TOPOGRAPHIC DIVISION  
7200  
APR 28 1970