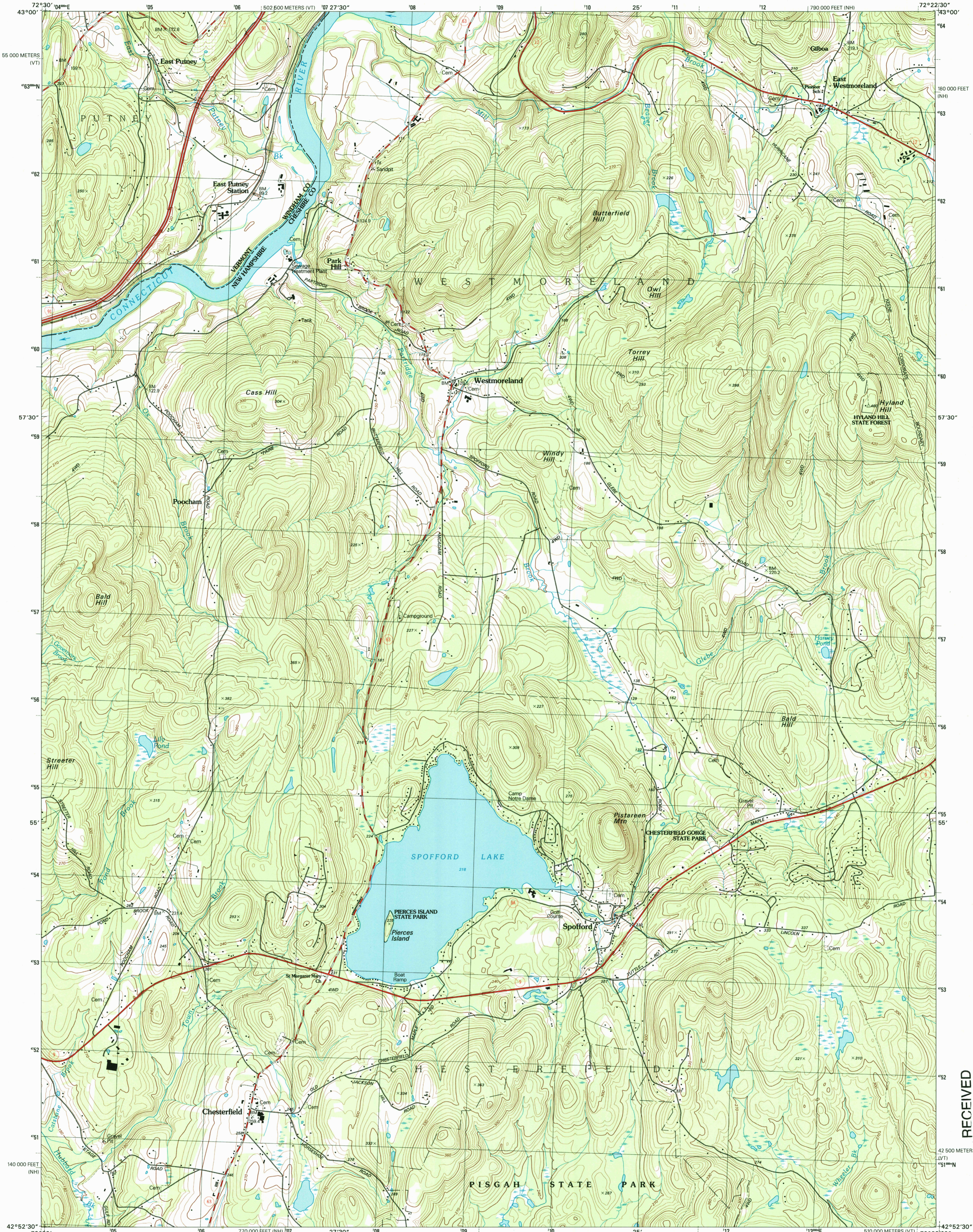


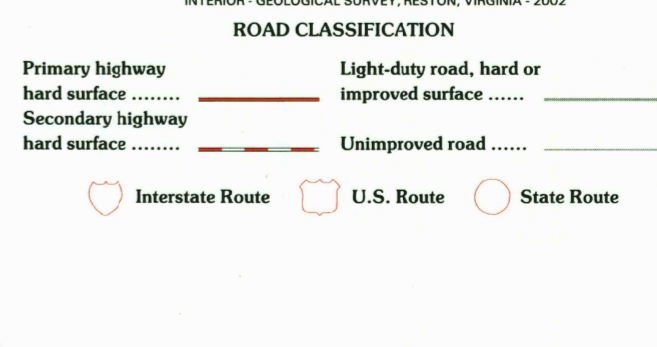
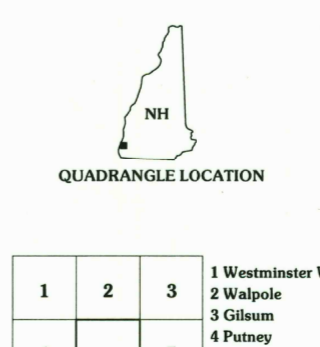
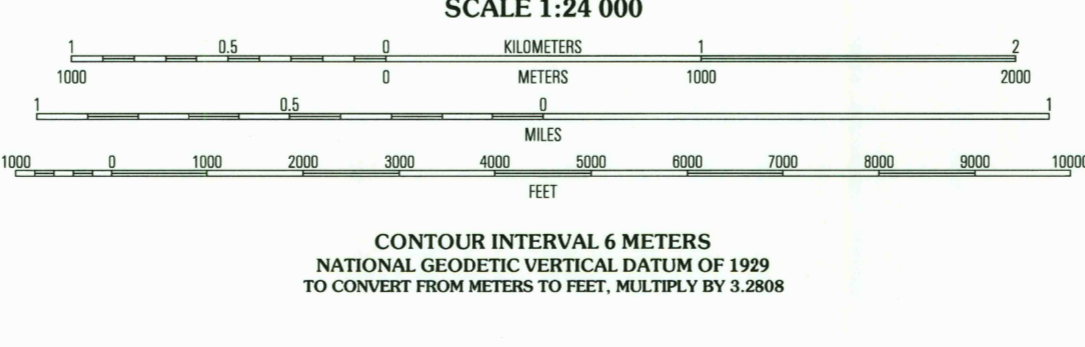
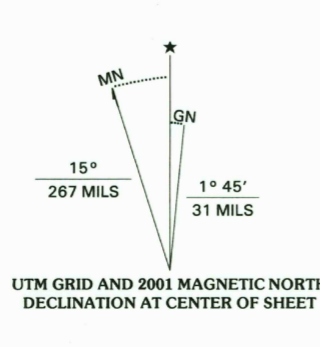


U.S. DEPARTMENT OF THE INTERIOR
U.S. GEOLOGICAL SURVEY

SPOFFORD QUADRANGLE
NEW HAMPSHIRE-VERMONT
7.5-MINUTE SERIES (TOPOGRAPHIC)



Produced by the United States Geological Survey
Topography compiled 1998. Planimetry derived from imagery taken 1998 and other sources. Survey control current as of 1980. Boundaries current as of 2001.
North American Datum of 1983 (NAD 83). Projection and 1000-meter grid: Universal Transverse Mercator, zone 18. 10 000-foot ticks: New Hampshire Coordinate System of 1983. 2 500-meter ticks: Vermont Coordinate System of 1983.
North American Datum of 1927 (NAD 27) is shown by dashed corner ticks. The values of the shift between NAD 83 and NAD 27 for 7.5-minute intersections are obtainable from National Geodetic Survey NADCON software.
There may be private inholdings within the boundaries of the National or State reservations shown on this map.
Houses of worship, schools, and other labeled buildings verified 1980.



1	2	3
4	5	6
7	8	

SPOFFORD, NH-VT
1998

NIMA 6569 IV NW-SERIES V812

THIS MAP COMPLIES WITH NATIONAL MAP ACCURACY STANDARDS
FOR SALE BY U.S. GEOLOGICAL SURVEY, P.O. BOX 25286, DENVER, COLORADO 80225
A FOLDER DESCRIBING TOPOGRAPHIC MAPS AND SYMBOLS IS AVAILABLE ON REQUEST

RECEIVED

AUG 3 1 2002

USGS WMD
HISTORICAL MAP ARCHIVES

