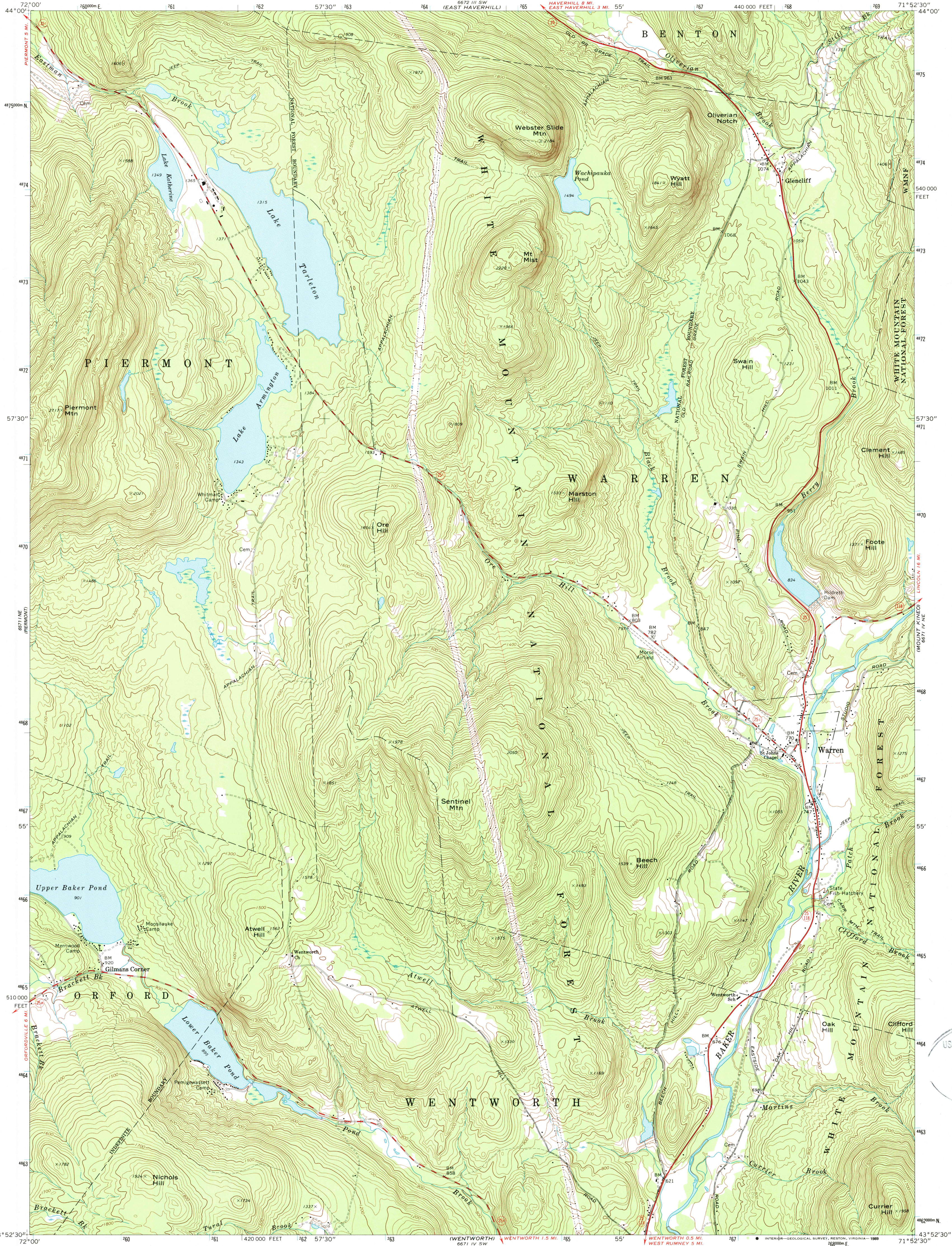


UNITED STATES
DEPARTMENT OF THE INTERIOR
GEOLOGICAL SURVEY

WARREN QUADRANGLE
NEW HAMPSHIRE—GRAFTON CO.
7.5 MINUTE SERIES (TOPOGRAPHIC)
NW/4 RUNNEY 15' QUADRANGLE

6672 III SE
(MT. MOOSILAUKE)



Mapped, edited, and published by the Geological Survey

Control by USGS and NOS/NOAA

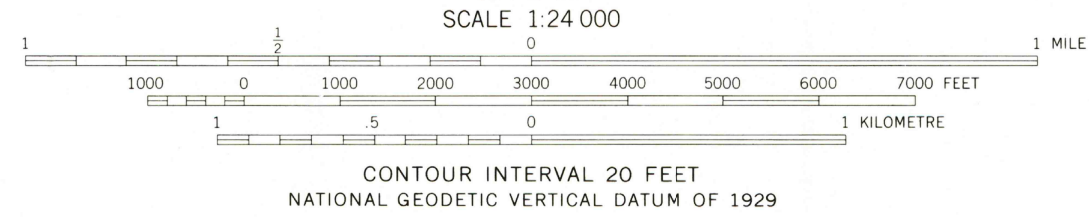
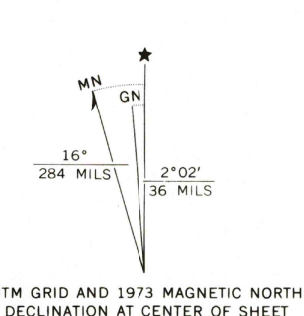
Topography by photogrammetric methods from aerial photographs taken 1971. Field checked 1973

Projection and 10,000-foot grid ticks: New Hampshire coordinate system (transverse Mercator)

1000-metre Universal Transverse Mercator grid ticks, zone 19, shown in blue. 1927 North American datum

Fine red dashed lines indicate selected fence and field lines where generally visible on aerial photographs. This information is unchecked

To place on the predicted North American Datum 1983 move the projection lines 3 meters south and 38 meters west as shown by dashed corner ticks



ROAD CLASSIFICATION	
Primary highway, hard surface	Light-duty road, hard or improved surface
Secondary highway, hard surface	Unimproved road
Interstate Route	U. S. Route
	State Route

WARREN, N. H.
NW/4 RUNNEY 15' QUADRANGLE
43071-H8-TF-024

1973

DMA 6671 IV NW—SERIES V812

THIS MAP COMPLIES WITH NATIONAL MAP ACCURACY STANDARDS
FOR SALE BY U. S. GEOLOGICAL SURVEY
DENVER, COLORADO 80225, OR RESTON, VIRGINIA 22092
A FOLDER DESCRIBING TOPOGRAPHIC MAPS AND SYMBOLS IS AVAILABLE ON REQUEST

USGS NHD HISTORICAL MAP
MAR 0 1 1989
REC'D FILE COPY