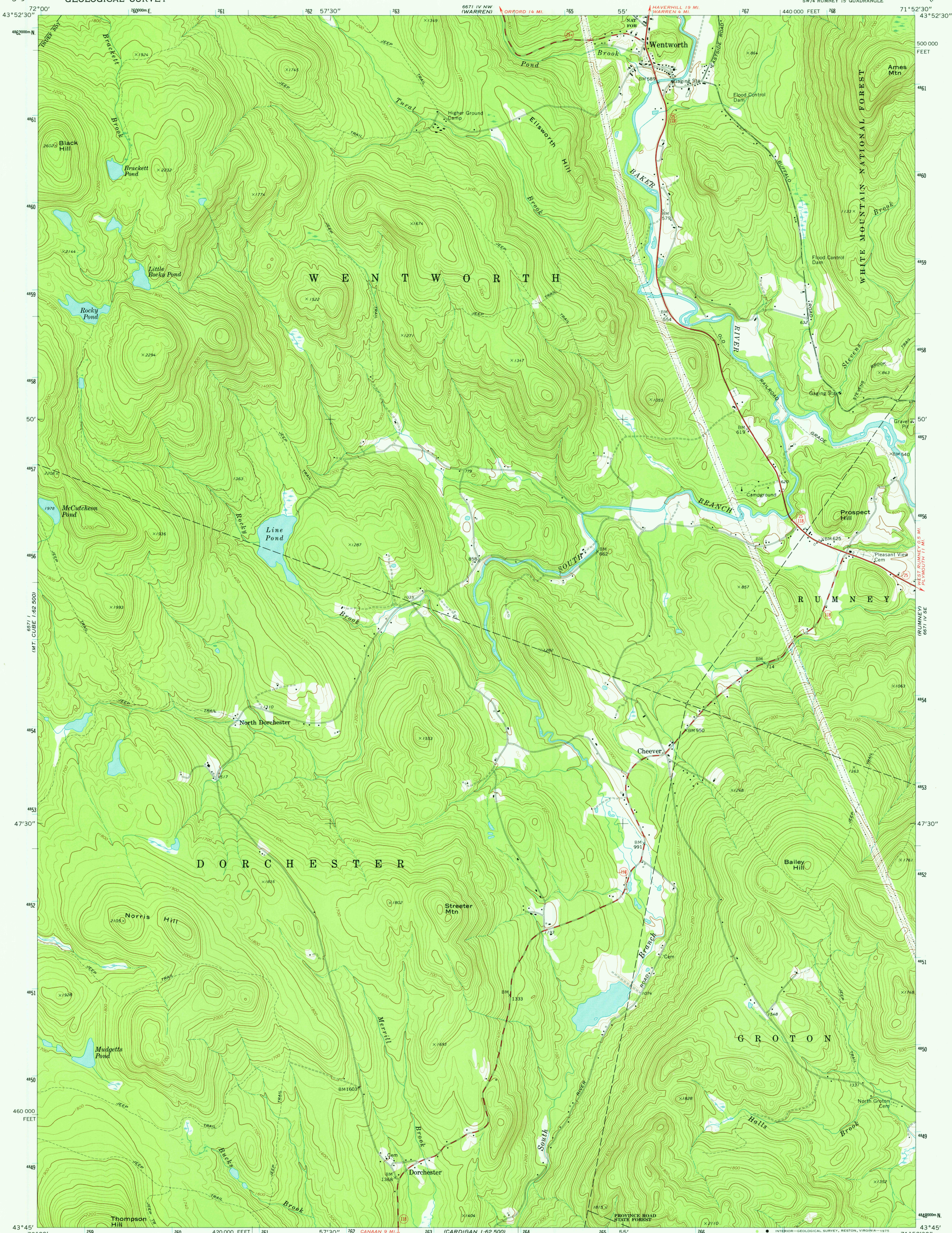
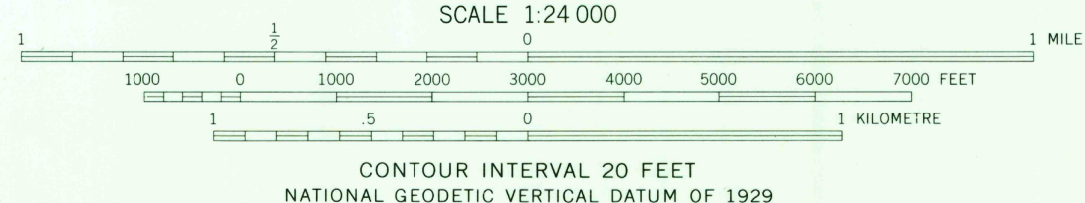
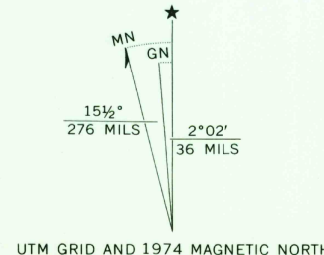


UNITED STATES
DEPARTMENT OF THE INTERIOR
GEOLOGICAL SURVEY

WENTWORTH QUADRANGLE
NEW HAMPSHIRE—GRAFTON CO.
7.5 MINUTE SERIES (TOPOGRAPHIC)
SW/4 RUMNEY 15' QUADRANGLE



Mapped, edited, and published by the Geological Survey
Control by USGS and NOS/NOAA
Topography by photogrammetric methods from aerial
photographs taken 1971. Field checked 1974
Projection and 10,000-foot grid ticks: New Hampshire
coordinate system (transverse Mercator)
1000-metre Universal Transverse Mercator grid ticks,
zone 19, shown in blue. 1927 North American datum



ROAD CLASSIFICATION
Primary highway, hard surface
Secondary highway, hard surface
Unimproved road
Interstate Route
U. S. Route
State Route
Light-duty road, hard or improved surface



WENTWORTH, N. H.
SW/4 RUMNEY 15' QUADRANGLE
N4345—W7152.5/7.5

USGS
HISTORICAL FILE
TOPOGRAPHIC DIVISION

1974
AMS 6671 IV SW—SERIES V612

THIS MAP COMPLIES WITH NATIONAL MAP ACCURACY STANDARDS
FOR SALE BY U. S. GEOLOGICAL SURVEY, RESTON, VIRGINIA 22092
A FOLDER DESCRIBING TOPOGRAPHIC MAPS AND SYMBOLS IS AVAILABLE ON REQUEST

JAN 13 1976