

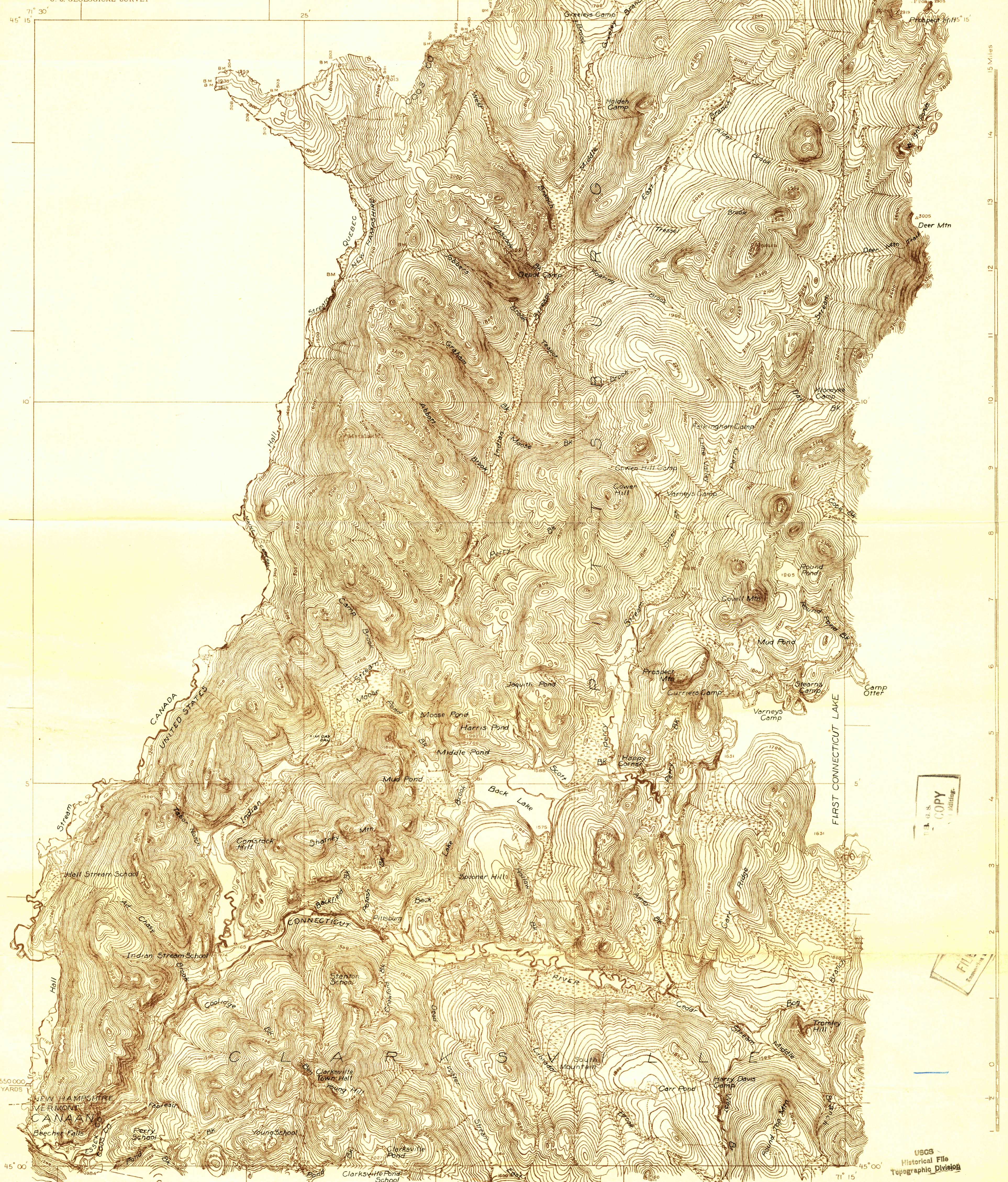
RETAINED COPY
This sheet must not be taken from
the files without an order from the
Chief Topographic Engineer.

U.S.G.S.
FILE COPY
Reproduction and Editing

NEW HAMPSHIRE
INDIAN STREAM QUADRANGLE

882-S-IV-W/2
WAR DEPARTMENT
CORPS OF ENGINEERS, U. S. ARMY

DEPARTMENT OF THE INTERIOR
U. S. GEOLOGICAL SURVEY

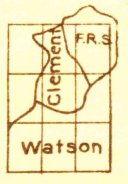


U.S.G.S.
FILE COPY
Reproduction and Editing

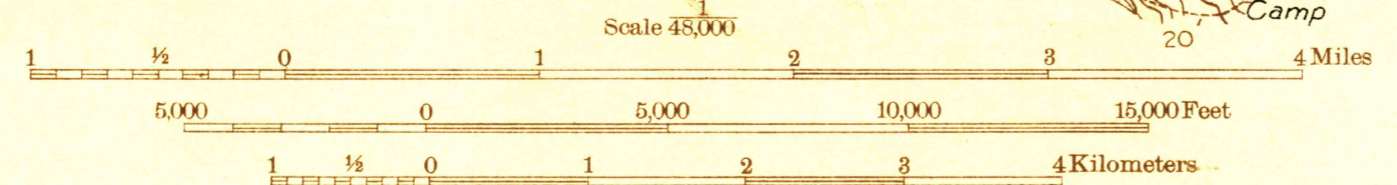
U.S.G.S.
FILE COPY
Reproduction and Editing

USGS
Historical File
Topographic Division

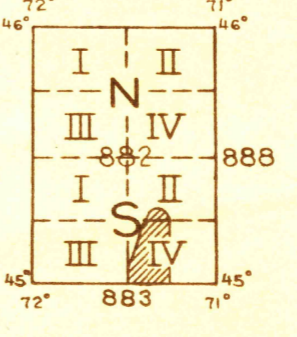
Topography by DH. Watson, SE. Clement, and FR. Swearengen
Control in part by International Boundary Commission
Surveyed in 1925



APPROXIMATE MEAN
DECLINATION, 1925



Contour interval 20 feet
Datum is mean sea level



USGS
Historical File
Topographic Division

Polyconic projection. North American datum
5000 yard grid based upon U. S. zone system, A

INDIAN STREAM, N.H.
RETURN TO:
USGS AND HISTORICAL MAP ARCHIVES

USGS
Historical File
Topographic Division