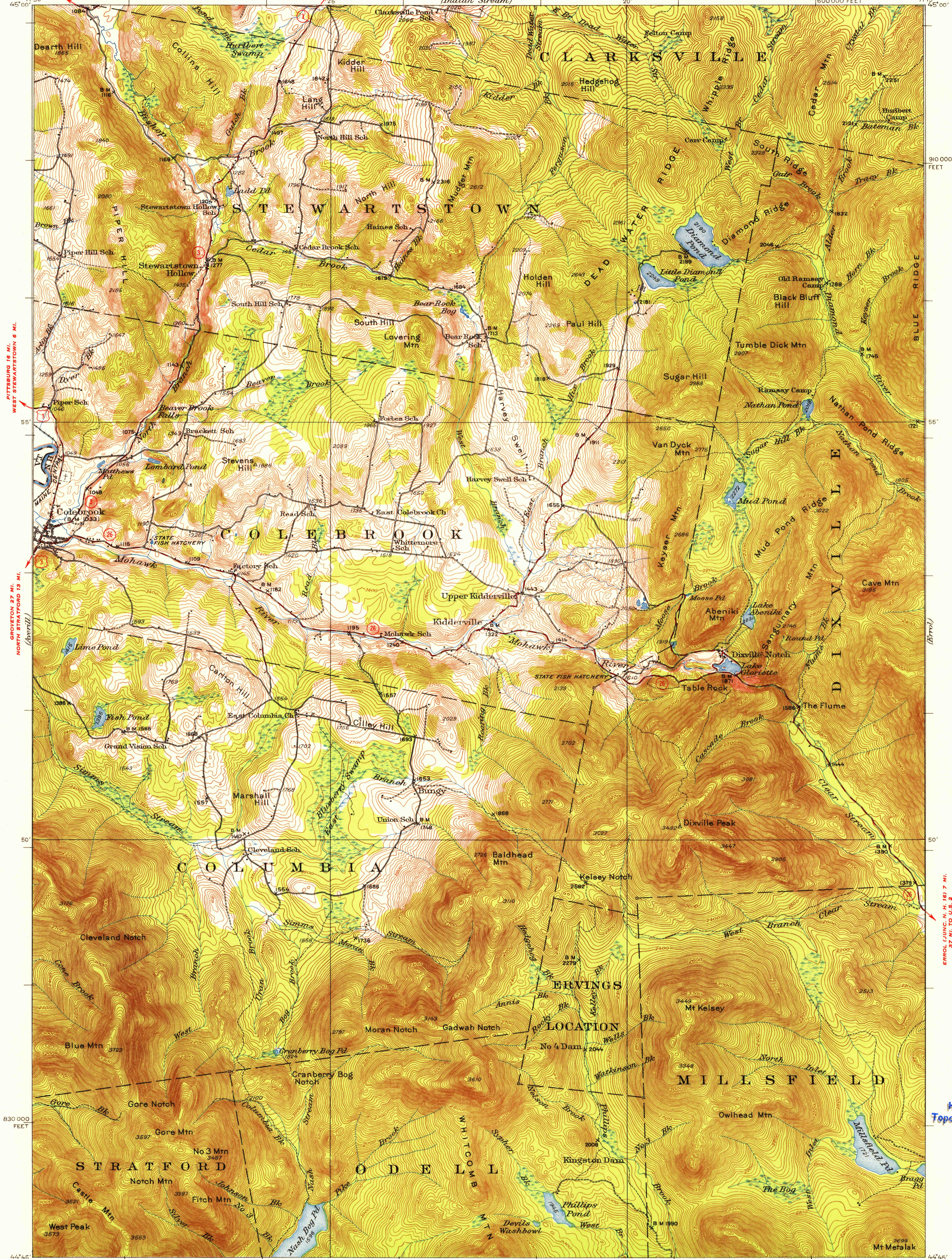


COLEBROOK 11 MI.
W. STEWARTSTOWN 2.7 MI.
PITTSBURG 7 MI.
CANADIAN BORDER 32 MI.
PITTSBURG 7 MI.
UNITED STATES
DEPARTMENT OF THE INTERIOR
GEOLOGICAL SURVEY

STATE OF NEW HAMPSHIRE
HIGHWAY DEPARTMENT

NEW HAMPSHIRE
(COOS COUNTY)
DIXVILLE QUADRANGLE
60000 FEET

U.S.G.S.
FILE COPY
TOPOGRAPHIC DIVISION

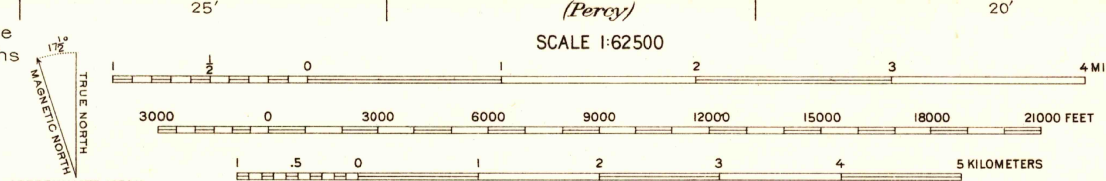


ERRORS: COOS CO. N. H. 187 7 MI.
37 MI. TO U.S. 2

USGS
Historical File
Topographic Division

U.S.G.S.
FILE COPY
TOPOGRAPHIC DIVISION

Topography by C. F. Fuechsel, Frank Lamer, and R. F. Hamke
Culture and drainage in part compiled from aerial photographs
taken by Air Corps, U.S. Army
Surveyed in 1930



INTERIOR - GEOLOGICAL SURVEY, WASHINGTON, D. C. | 1954
Polyconic projection, 1927 North American datum
10000 foot grid based on New Hampshire
rectangular coordinate system

CONTOUR INTERVAL 20 FEET
DATUM IS MEAN SEA LEVEL
FOR SALE BY U. S. GEOLOGICAL SURVEY, WASHINGTON 25, D. C.
A FOLDER DESCRIBING TOPOGRAPHIC MAPS AND SYMBOLS IS AVAILABLE ON REQUEST

ROAD CLASSIFICATION
Heavy-duty ——— 4 LANE 6 LANE Light-duty ———
Medium-duty - - - - 4 LANE 6 LANE Unimproved dirt - - - -
U. S. Route State Route

DIXVILLE, N. H.
N4445-W7115/5
1930

DEC 20 1954
4795