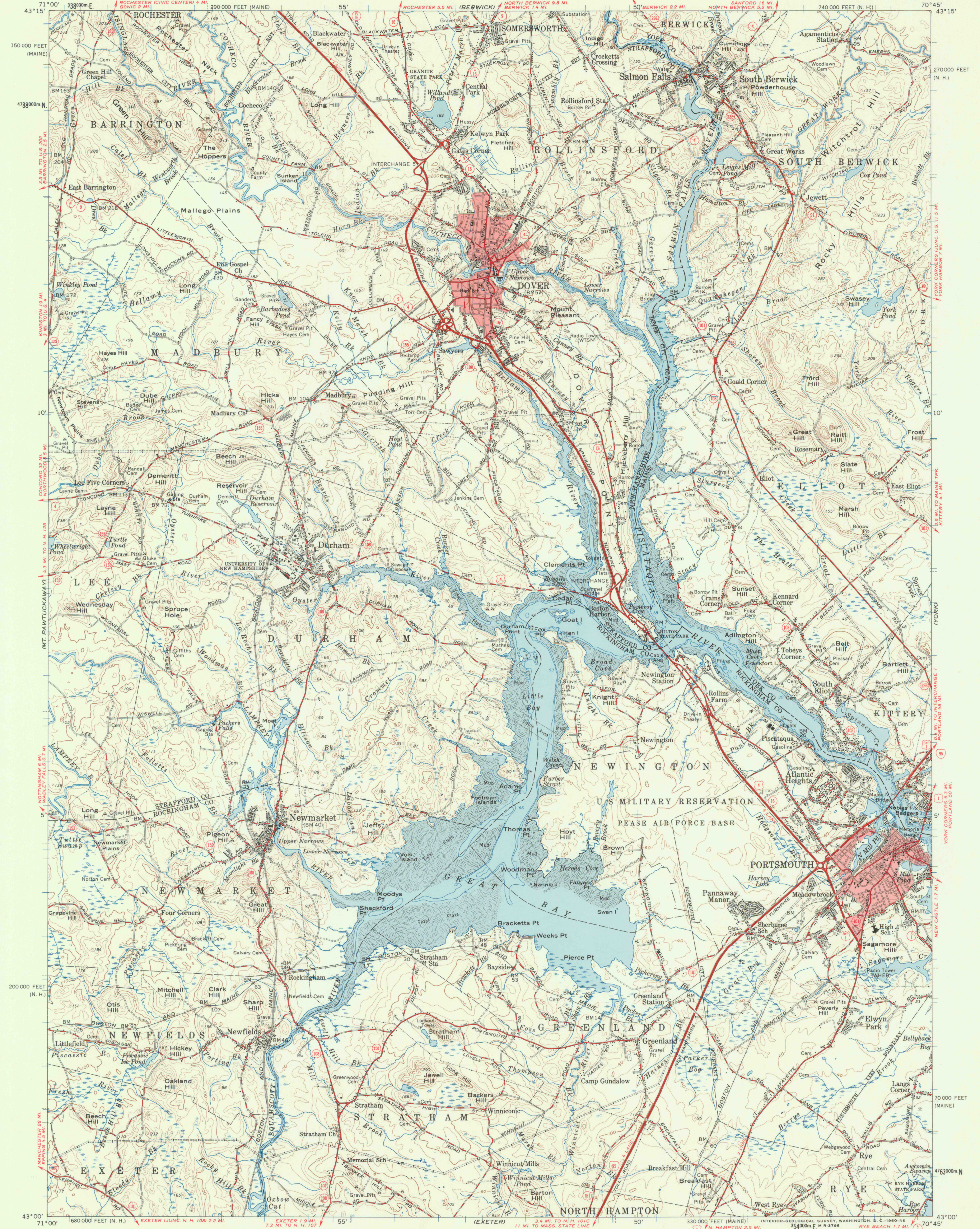


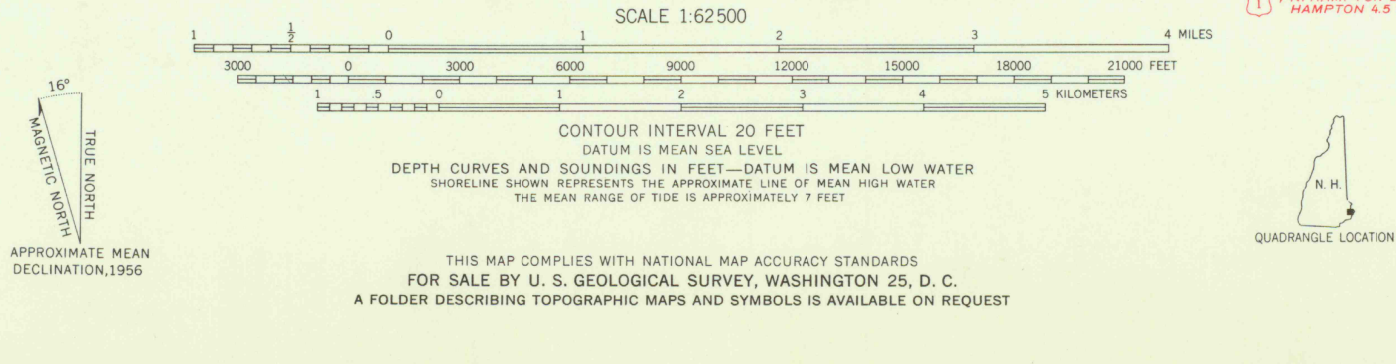
UNITED STATES  
DEPARTMENT OF THE INTERIOR  
GEOLOGICAL SURVEY

UNITED STATES  
DEPARTMENT OF THE ARMY  
CORPS OF ENGINEERS

DOVER QUADRANGLE  
NEW HAMPSHIRE-MAINE  
15 MINUTE SERIES (TOPOGRAPHIC)



Map by the Army Map Service  
Edited and published by the Geological Survey  
Control by USGS, USC&GS, and New Hampshire Geodetic Survey  
Compiled in 1960 from 1:24,000-scale maps of  
Dover East, Dover West, Newmarket and  
Portsmouth 7.5 minute quadrangles, surveyed 1942-1944  
Culture revised by the Geological Survey 1956  
Topography by planetable surveys. Aerial photographs taken 1943  
Hydrography compiled from USC&GS charts 229 (1955)  
and 329 (1955)  
Polyconic projection. 1927 North American datum  
10,000-foot grids based on Maine coordinate system, west zone,  
and New Hampshire coordinate system  
1000-meter Universal Transverse Mercator grid ticks,  
zone 19, shown in blue  
Red tint indicates areas in which only landmark buildings are shown



ROAD CLASSIFICATION  
Heavy-duty ——— Light-duty ———  
Medium-duty ——— Unimproved dirt ———  
Interstate Route U.S. Route State Route  
This area also covered by 1:24,000-scale maps of  
Dover East, Dover West, Newmarket and  
Portsmouth 7.5 minute quadrangles, surveyed 1956  
**DOVER, N. H.—MAINE**  
N4300—W7045/15  
1956