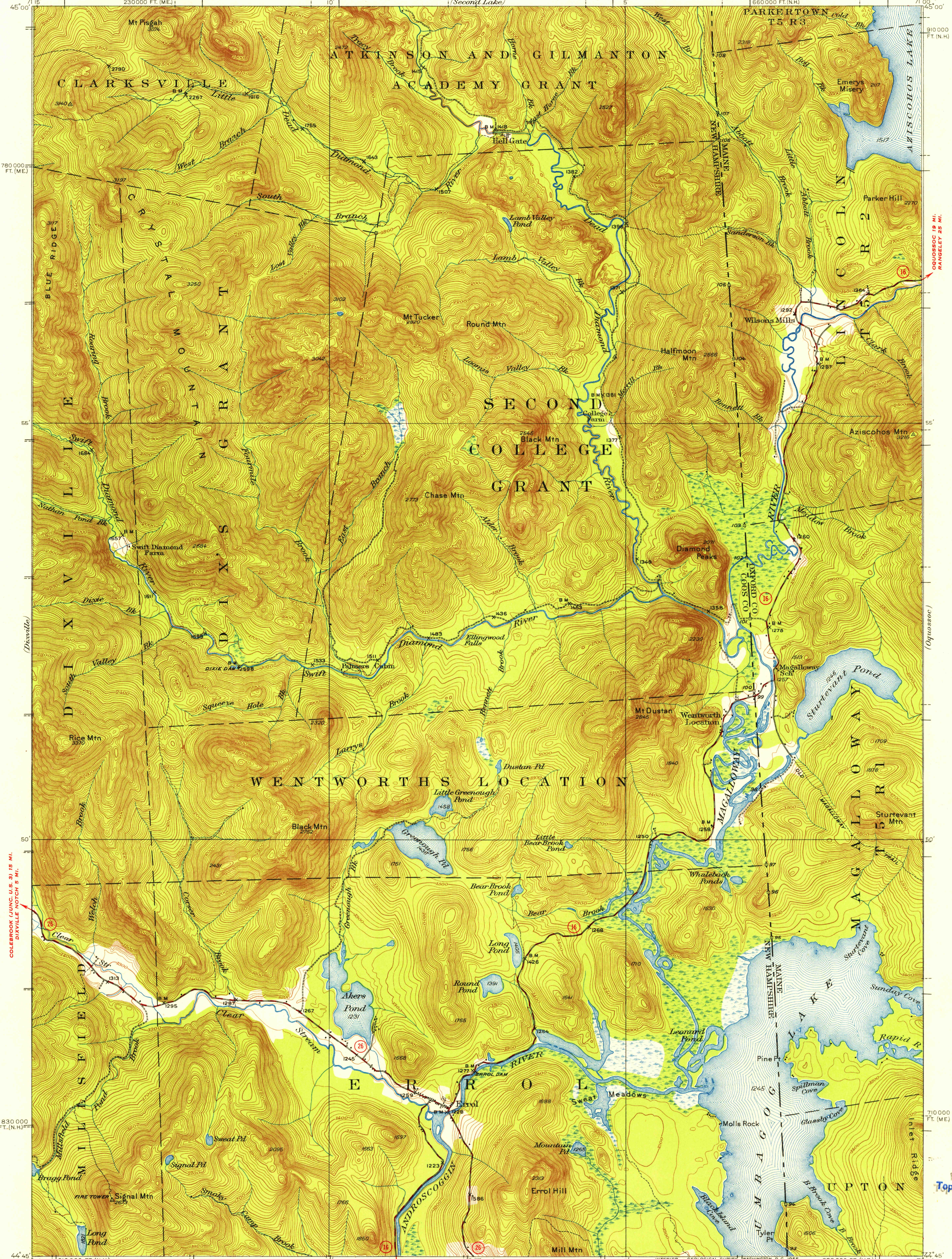


U.S.G.S.
FILE COPY
TOPOGRAPHIC DIVISION



Topography by A.J. Ogle, F.H. Sargent,
C.S. Wells, and R.F. Hamke
Surveyed in 1930

SCALE 1:62500
MILAN 19 MI. BERLIN 28 MI. UPTON 7.2 MI. 28 MI. TO U.S. 2

Polyconic projection, 1927 North American datum
10000-foot grids based on New Hampshire and
Maine (West) rectangular coordinate system

ROAD CLASSIFICATION
Heavy-duty ———+LANE 6 LANE Light-duty ———+
Medium-duty ———+LANE 6 LANE Unimproved dirt ———+
U. S. Route State Route

APPROXIMATE MEAN
DECLINATION, 1930

CONTOUR INTERVAL 20 FEET
DATUM IS MEAN SEA LEVEL

U.S.G.S.
FILE COPY
TOPOGRAPHIC DIVISION

ERROL, N.H.-ME.
N4445-W7100/15

1930

FOR SALE BY U. S. GEOLOGICAL SURVEY, WASHINGTON 25, D. C.
A FOLDER DESCRIBING TOPOGRAPHIC MAPS AND SYMBOLS IS AVAILABLE ON REQUEST

OCT 19 1955
6267