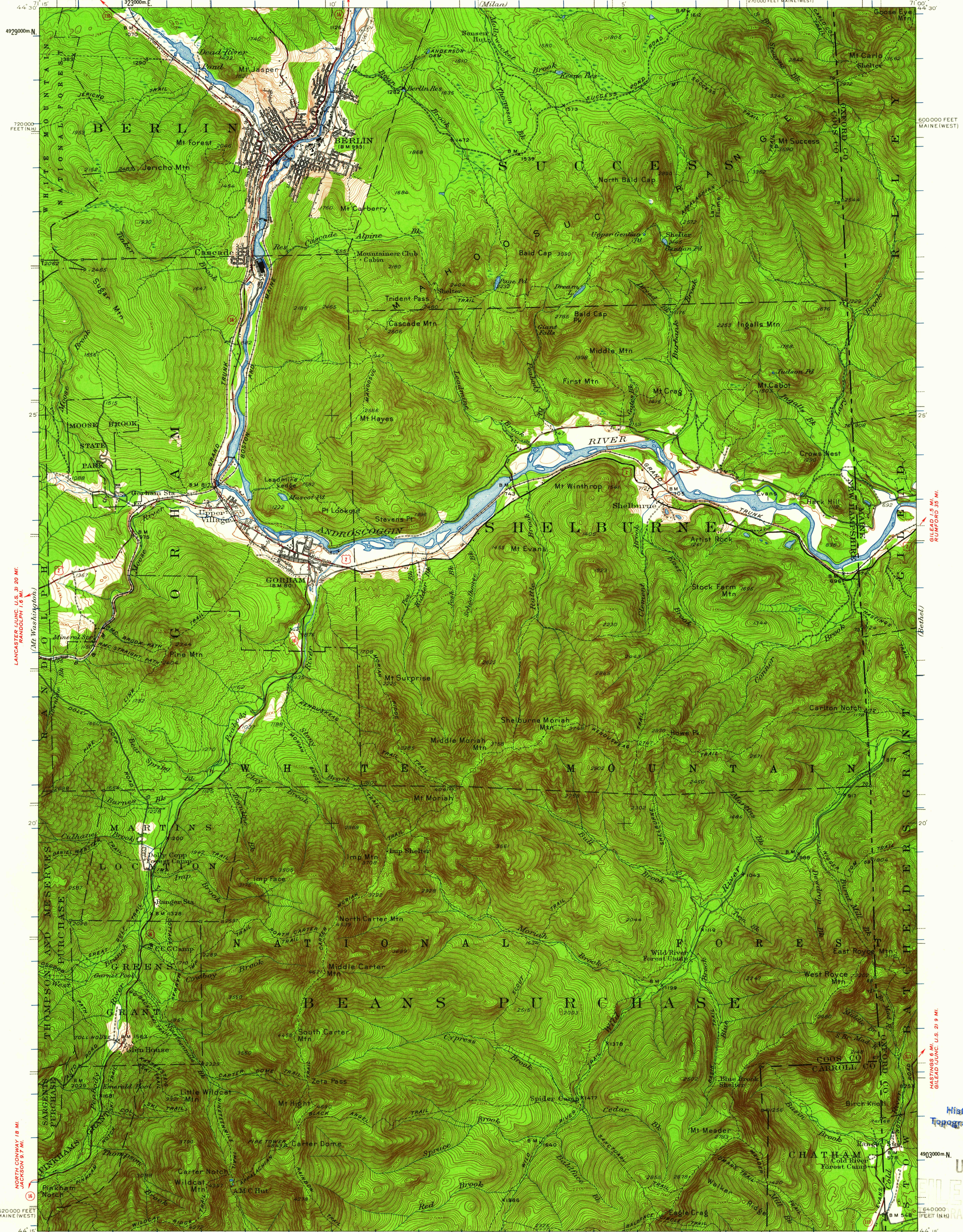


(Old Spack Mt.)



LANCASTER (JUNC. U.S. 3) 20 MI.
HANGOPPI 1.6 MI.

GILEAD (JUNC. U.S. 2) 19 MI.
RUMFORD 35 MI.

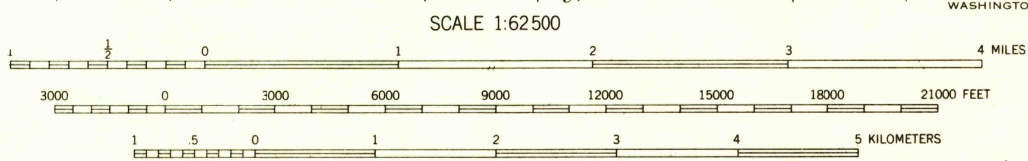
HASTINGS 6 MI.
GILEAD (JUNC. U.S. 2) 19 MI.

49°30'00"N
71°00'00"W

Topography by A.J. Ogle, H.A. Bean, E.V. Holloway,
F.H. Sargent, H.J. McMillen, and C.W. Birdeeye
Surveyed in 1936 and 1937

ROAD CLASSIFICATION

Heavy-duty	Light-duty
Medium-duty	Unimproved dirt
U.S. Route	State Route



CONTOUR INTERVAL 20 FEET
DATUM IS MEAN SEA LEVEL

Polyconic projection. To place on 1927 North American datum
move projection lines 50 feet north
10,000-foot grids based on New Hampshire and
Maine (West) rectangular coordinate systems
1000-meter Universal Transverse Mercator grid ticks,
zone 19, shown in blue

STOW 6.5 MI.
FRYBURG (JUNC. U.S. 302) 19 MI.
GORHAM, N. H.-ME.
N4415-W7100/15

1937

FOR SALE BY U.S. GEOLOGICAL SURVEY, WASHINGTON 25, D. C.
A FOLDER DESCRIBING TOPOGRAPHIC MAPS AND SYMBOLS IS AVAILABLE ON REQUEST

USGS
Historical File
Topographic Division

U.S.G.S.
FILE COPY
TOPOGRAPHIC DIVISION

DEC 15 1961

6080