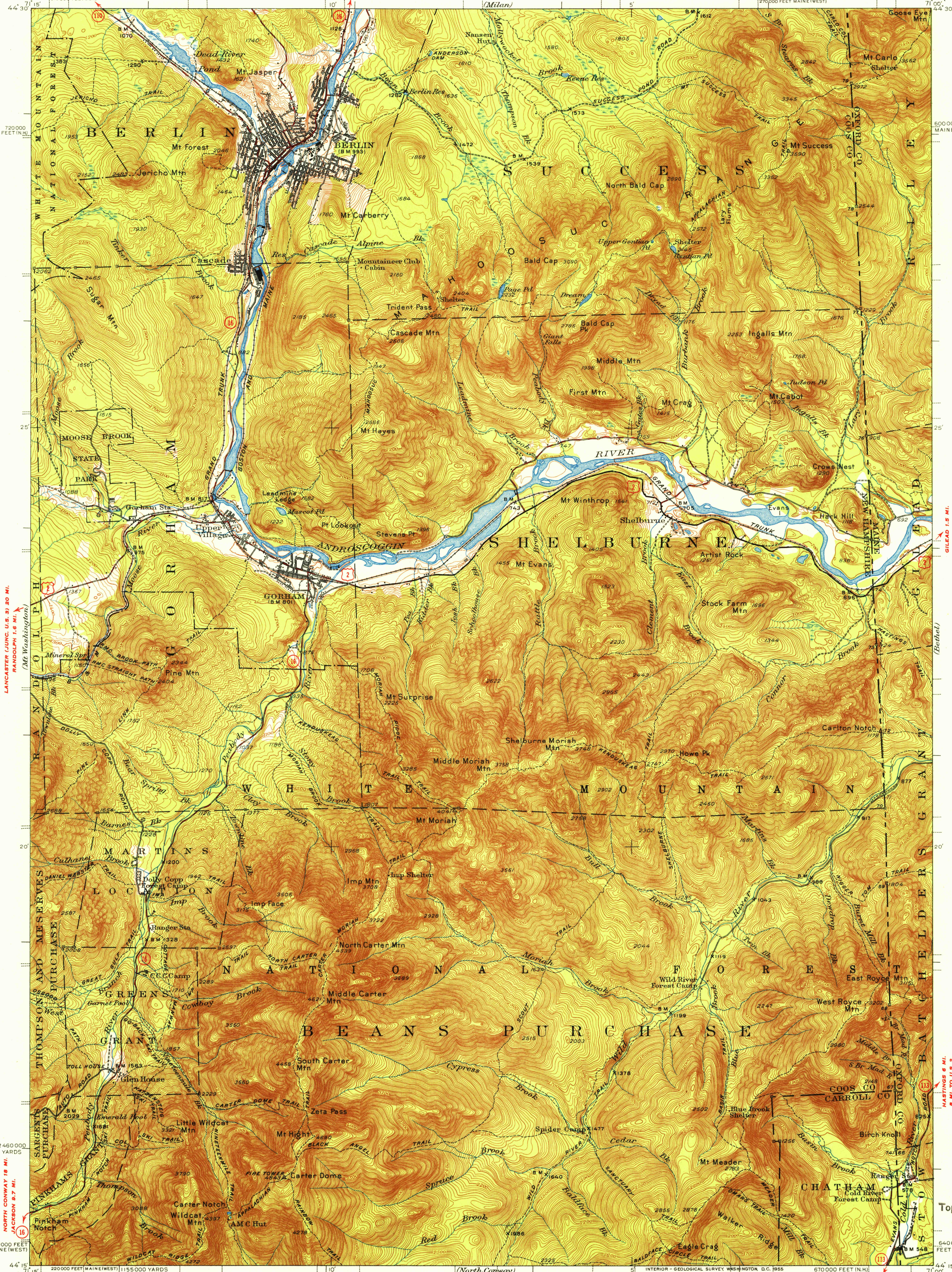


ERROL (JUNC. N.H. 26) 27 MI.
MILAN S.S. MI.

(Old Spruce Mtn)

U.S.G.S.
FILE COPY
TOPOGRAPHIC DIVISION



LANCASTER (JUNC. U.S. 31) 20 MI.
RANDOLPH 5.6 MI.

GILEAD 1.5 MI.
RUMFORD 38 MI.

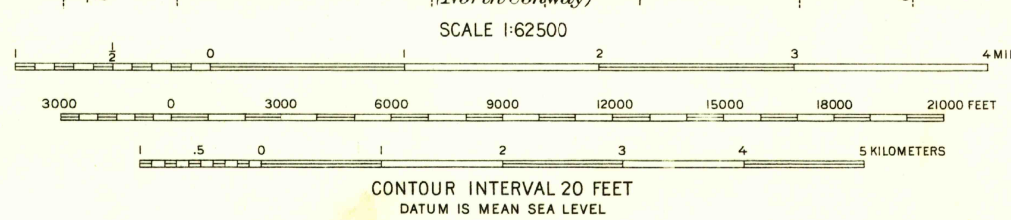
(Bethel)

MASTON 8 MI.
8 MI. TO U.S. 2

USGS
Historical File
Topographic Division

Topography by A. J. Ogle, H. A. Bean, E. V. Holloway,
F. H. Sargent, H. J. McMillan, and C. W. Birdseye
Surveyed in 1936 and 1937

ROAD CLASSIFICATION
Heavy-duty ——— 4 LANE 6 LANE Light-duty ———
Medium-duty - - - 4 LANE 6 LANE Unimproved dirt - - -
U. S. Route State Route



Polyconic projection, North American datum
5000 yard grid based on U.S. zone system, A
10000 foot grids based on New Hampshire and
Maine (West) rectangular coordinate systems

STOW 6.5 MI.
FRYEBURG (JUNC. U.S. 302) 18 MI.
GORHAM N.H.-ME.
N4415-W7100/15

1937

FOR SALE BY U. S. GEOLOGICAL SURVEY, WASHINGTON 25, D. C.
A FOLDER DESCRIBING TOPOGRAPHIC MAPS AND SYMBOLS IS AVAILABLE ON REQUEST

U.S.G.S.
FILE COPY
TOPOGRAPHIC DIVISION

MAY 5 1955
6000