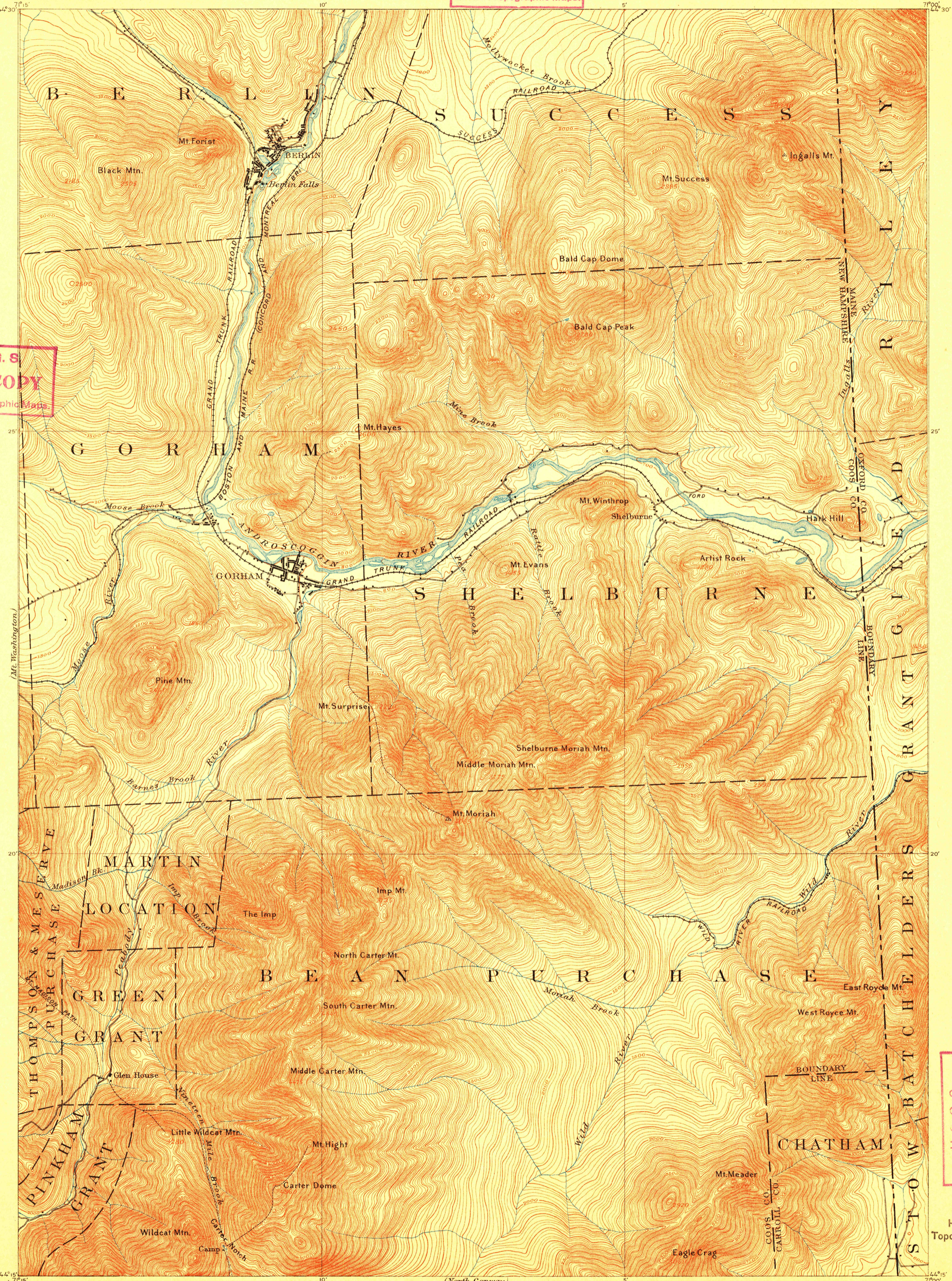


U. S. G. S.  
**FILE COPY**  
Ed. Div. Topographic Maps.

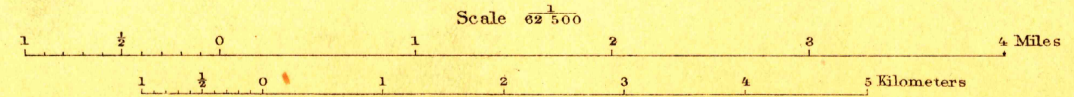


U. S. G. S.  
**FILE COPY**  
Ed. Div. Topographic Maps.

U. S. G. S.  
**FILE COPY**  
Ed. Div. Topographic Maps.

USGS  
Historical File  
Topographic Division

Henry Gannett, Chief Topographer.  
H.M. Wilson, Geographer in charge.  
Trangulation by U.S. Coast and Geodetic Survey.  
Topography by W.H. Lovell.  
Surveyed in 1891.



Contour Interval 20 feet  
Datum is mean Sea level

Edition of Sept. 1893, reprinted Aug. 1909.

JAN 20 1910 2567

GORHAM  
N.H.-ME.

(Crawford Notch)