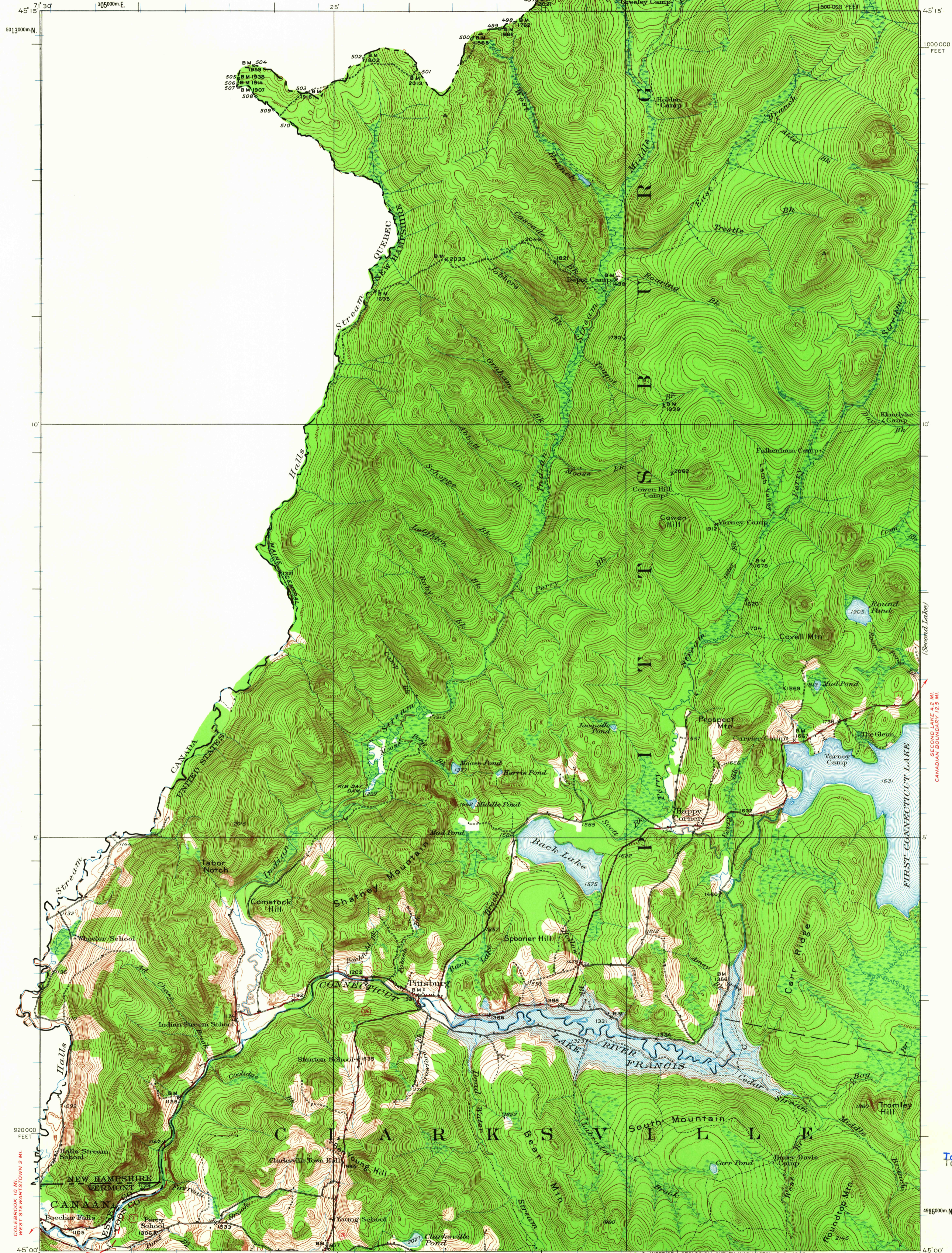


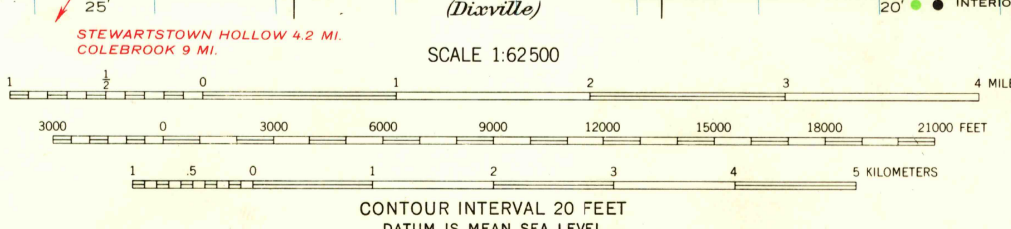
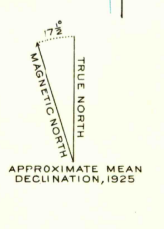
UNITED STATES
DEPARTMENT OF THE INTERIOR
GEOLOGICAL SURVEY

UNITED STATES
DEPARTMENT OF THE ARMY
CORPS OF ENGINEERS



Topography by D.H. Watson, S.E. Clement, and F.R. Swearingen, Surveyed in 1925

ROAD CLASSIFICATION
Heavy-duty ——— Light-duty ———
Medium-duty ——— Unimproved dirt ———
U. S. Route State Route



Polyconic projection. 1927 North American datum
10,000-foot grid based on New Hampshire
rectangular coordinate system
1000-meter Universal Transverse Mercator grid ticks,
zone 19, shown in blue

INDIAN STREAM, N.H.-VT.
N4500-W7115/15
1926
minor corrections made 1946

FOR SALE BY U. S. GEOLOGICAL SURVEY, WASHINGTON, D. C. 20242
A FOLDER DESCRIBING TOPOGRAPHIC MAPS AND SYMBOLS IS AVAILABLE ON REQUEST

USGS
Historical File
Topographic Division

SEP 20 1985
11,500

U.S.G.S.
FILE COPY
TOPOGRAPHIC DIVISION