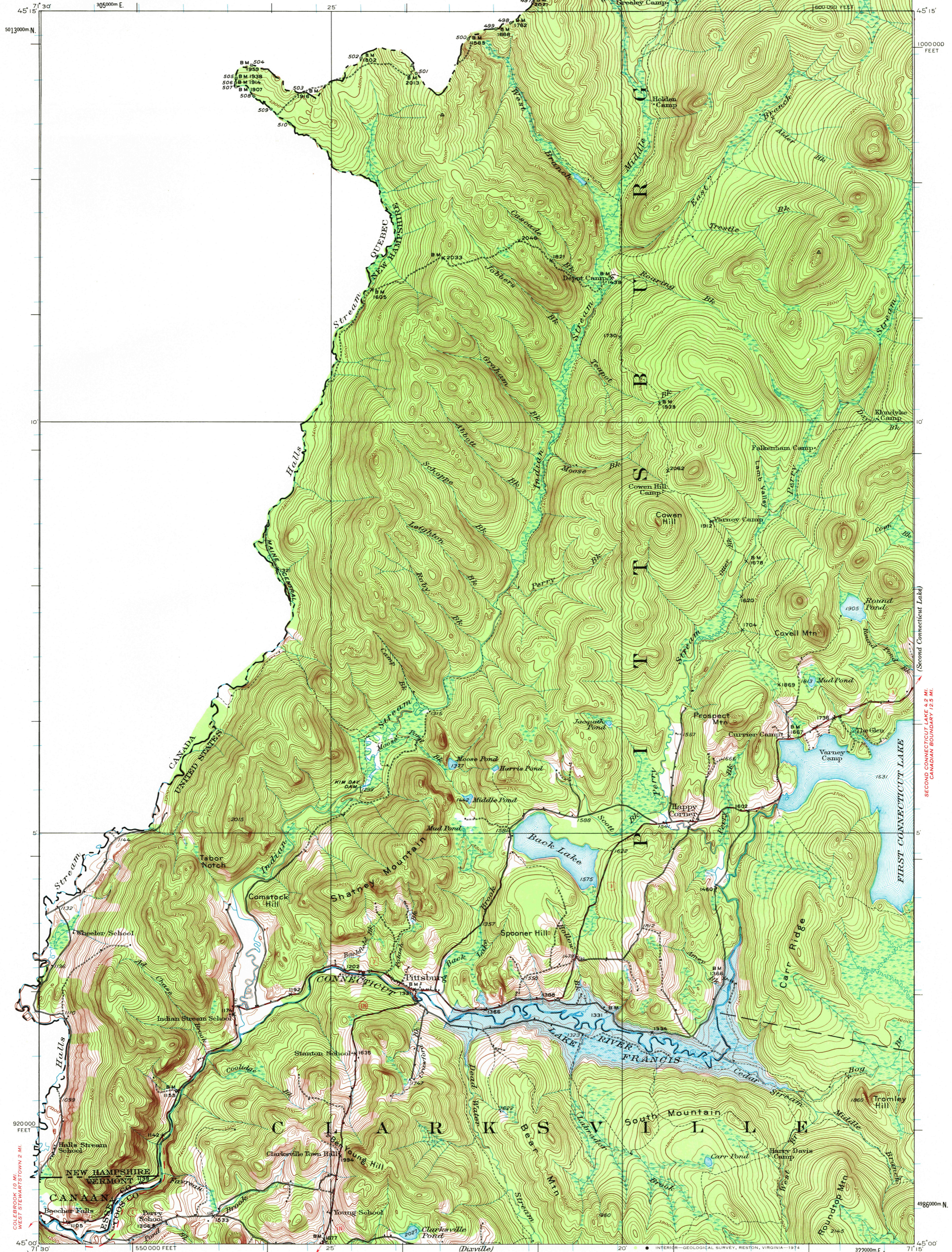


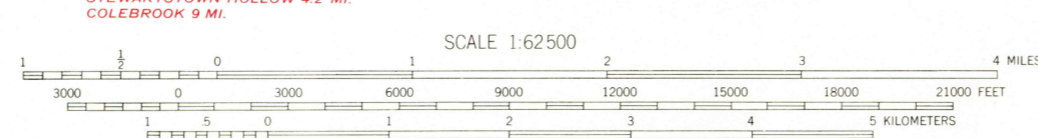
UNITED STATES  
DEPARTMENT OF THE INTERIOR  
GEOLOGICAL SURVEY

UNITED STATES  
DEPARTMENT OF THE ARMY  
CORPS OF ENGINEERS



Topography by D.H. Watson, S.E. Clement, and F.R. Swearingen  
Surveyed in 1925

**ROAD CLASSIFICATION**  
Heavy duty ——— Light duty ———  
Medium duty ——— Unimproved dirt ———  
U.S. Route      State Route



CONTOUR INTERVAL 20 FEET  
NATIONAL GEODETIC VERTICAL DATUM OF 1929

Polyconic projection. 1927 North American datum  
10,000-foot grid based on New Hampshire  
rectangular coordinate system  
1000-meter Universal Transverse Mercator grid ticks,  
zone 19, shown in blue

INDIAN STREAM, N.H.-VT.  
N4500-W7115/15  
1926  
minor corrections made 1946