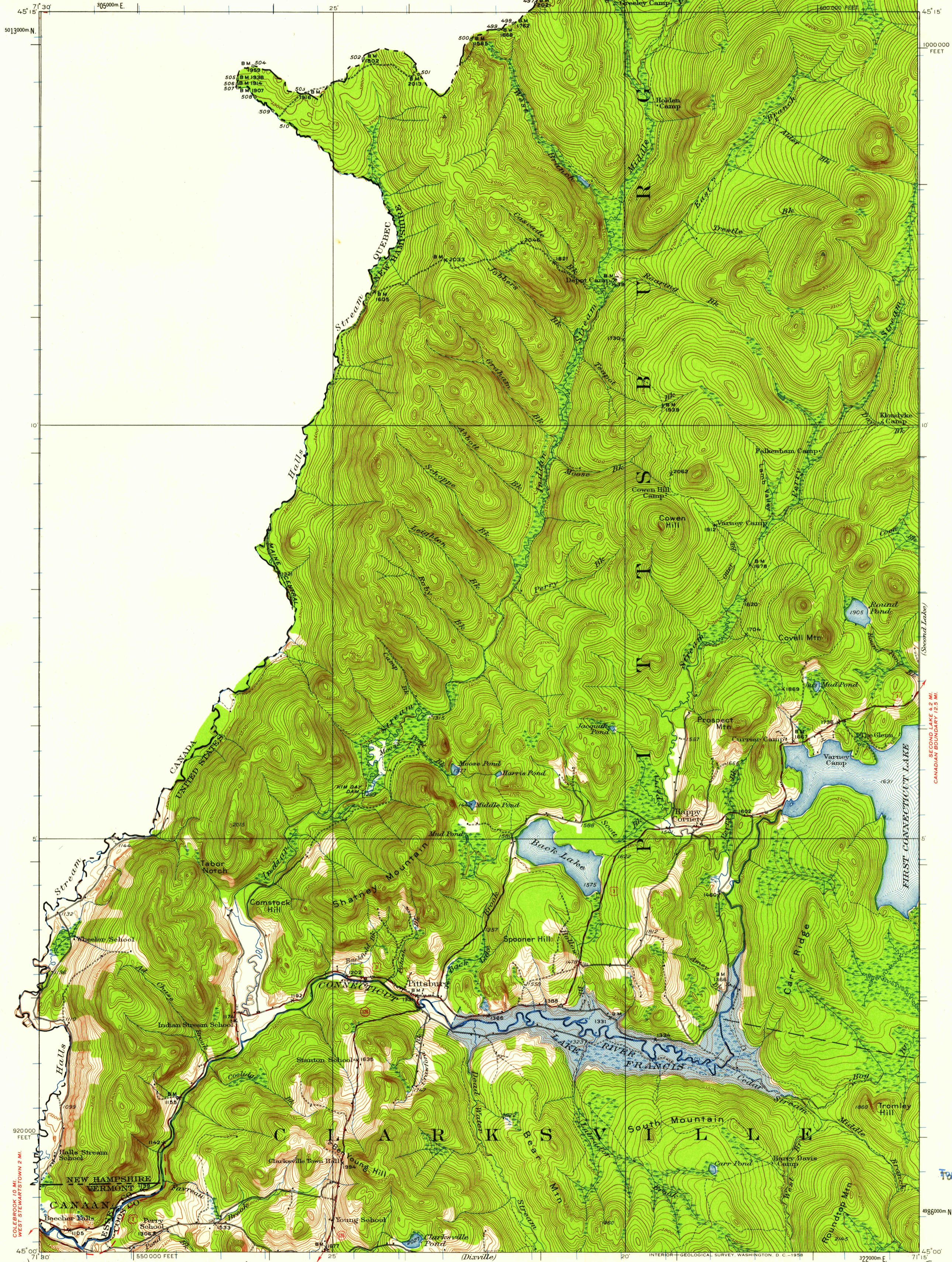


UNITED STATES
DEPARTMENT OF THE INTERIOR
GEOLOGICAL SURVEY

UNITED STATES
DEPARTMENT OF THE ARMY
CORPS OF ENGINEERS



45° 15' N
71° 30' W
5013000m N
305000m E
25'
10'
5'
920000 FEET
550000 FEET
45° 00' N
71° 30' W

1000000 FEET
45° 15' N
10'
5'
4985000m N
71° 15' W

Topography by D.H. Watson, S.E. Clement, and F.R. Swearingen
Surveyed in 1925

ROAD CLASSIFICATION

Heavy-duty	Light-duty
Medium-duty	Unimproved dirt
U.S. Route	State Route

SCALE 1:62500

3000 0 3000 6000 9000 12000 15000 18000 21000 FEET

1 0 1 2 3 4 5 KILOMETERS

CONTOUR INTERVAL 20 FEET
DATUM IS MEAN SEA LEVEL

USGS
Historical File
Topographic Division

U.S.G.S.
FILE COPY
TOPOGRAPHIC DIVISION

INDIAN STREAM, N.H.-VT.
N4500-7115/15
1926
minor corrections made 1946

DEC 11 1958

2845