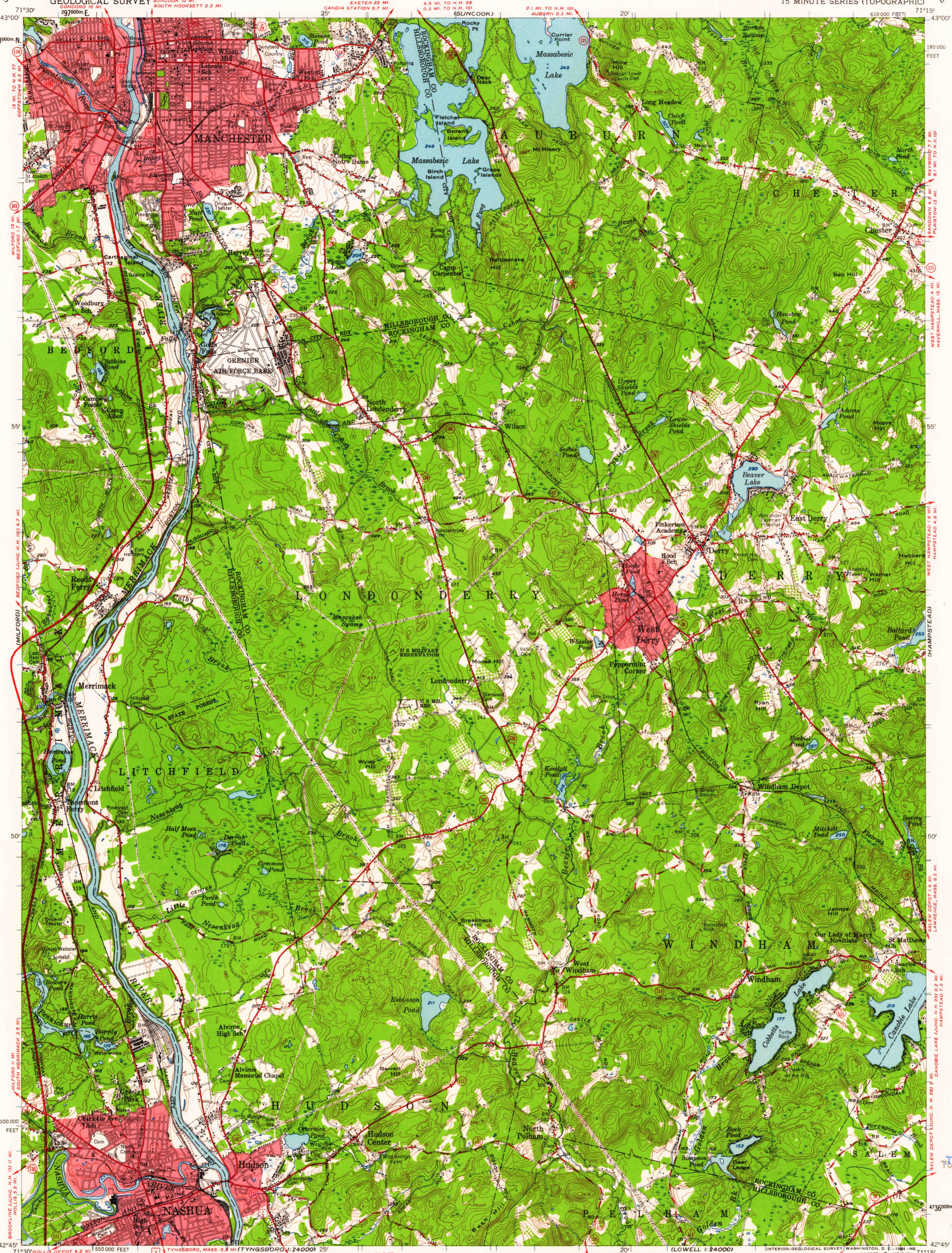


(CONCORD)

(MT. PAWLUCK-AWAY)



Maped, edited, and published by the Geological Survey  
Control by USGS, USC&GS and New Hampshire Geodetic Survey  
Topography from aerial photographs by photogrammetric methods  
Aerial photographs taken 1947 and 1952. Field check 1953  
Polyconic projection. 1927 North American datum  
10,000-foot grid based on New Hampshire coordinate system,  
1000-meter Universal Transverse Mercator grid ticks,  
zone 19, shown in blue  
Red tint indicates areas in which only  
landmark buildings are shown  
Unchecked elevations are shown in brown

APPROXIMATE MEAN DECLINATION, 1953

SCALE 1:62500

CONTOUR INTERVAL 20 FEET  
DATUM IS MEAN SEA LEVEL

ROAD CLASSIFICATION  
Heavy-duty — Light-duty  
Medium-duty — Unimproved dirt  
U.S. Route — State Route

QUADRANGLE LOCATION

THE SE/4 of this area also covered by 1:24,000 scale map of Windham 7.5 minute quadrangle, surveyed 1953

MANCHESTER, N. H.  
N 4245-W 7115/15

1953

THIS MAP COMPLIES WITH NATIONAL MAP ACCURACY STANDARDS  
FOR SALE BY U. S. GEOLOGICAL SURVEY, WASHINGTON 25, D. C.  
A FOLDER DESCRIBING TOPOGRAPHIC MAPS AND SYMBOLS IS AVAILABLE ON REQUEST

USGS  
Geological Survey  
Topographic Division

U.S.G.S.  
FILE COPY  
TOPOGRAPHIC DIVISION

JULY - 2 1961  
6125