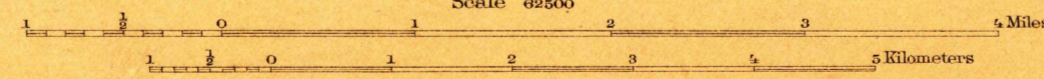




U.S.G.S.  
**FILE COPY**  
Ed. Div. Topographic Maps.

U.S.G.S.  
**FILE COPY**  
Ed. Div. Topographic Maps.

730  
H.M. Wilson, Geographer.  
Hersey Munroe, Topographer in charge.  
Topography by Hersey Munroe, Assistant B.B. Alexander.  
Triangulation by G.T. Hawkins.  
Surveyed in 1903.



Scale 62500  
Contour interval 20 feet.  
Datum is mean sea level.

ENGRAVED JAN. 1905 BY U.S.G.S.  
Edition of July 1905, reprinted May 1911.

JUL 10 1911 3516

MANCHESTER, N. H.