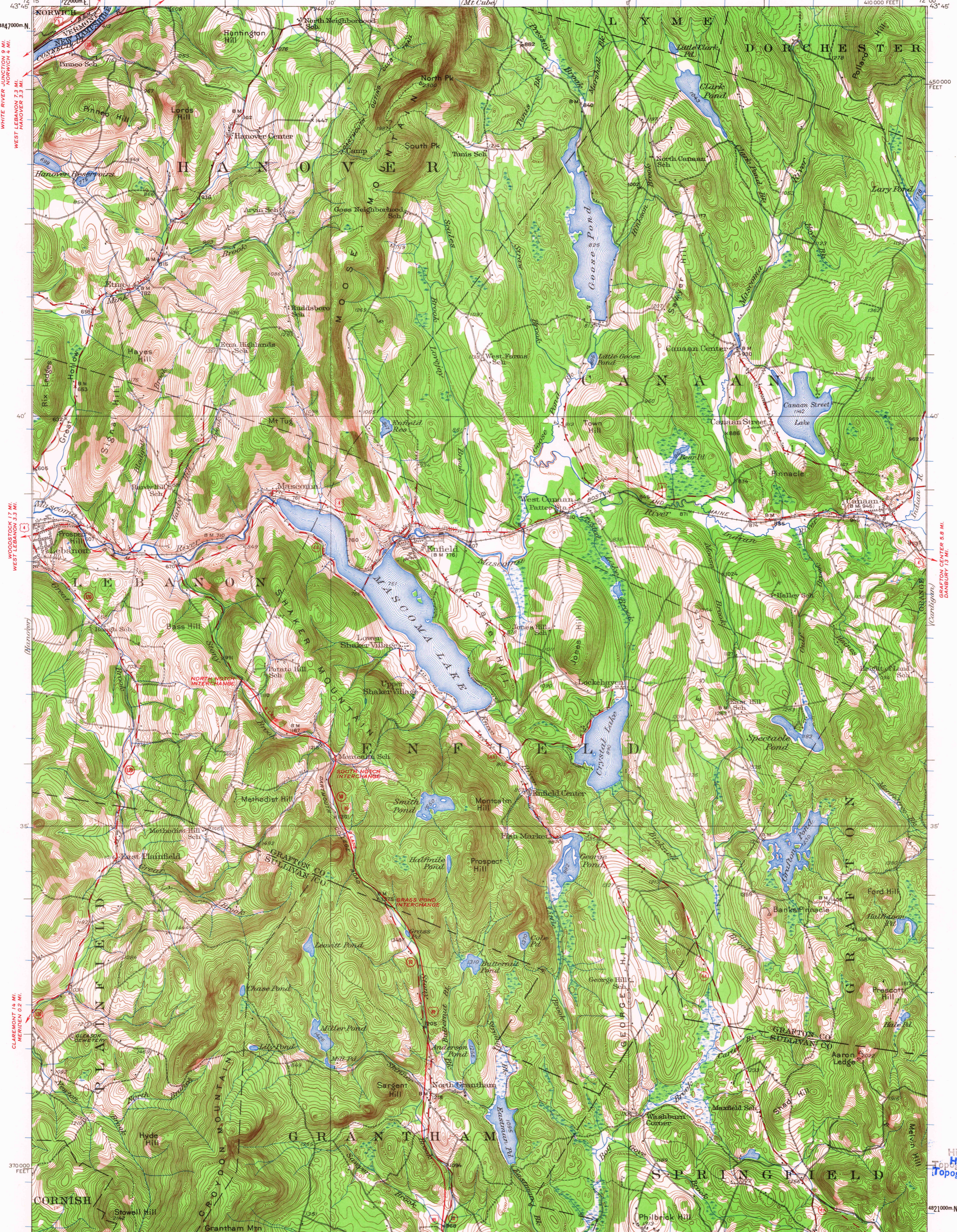


UNITED STATES
DEPARTMENT OF THE INTERIOR
GEOLOGICAL SURVEY

STATE OF NEW HAMPSHIRE
HIGHWAY DEPARTMENT

STATE OF VERMONT
REPRESENTED BY THE
STATE GEOLOGIST

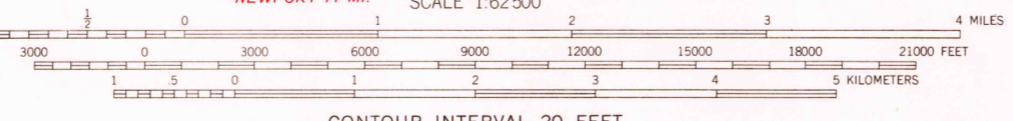
NEW HAMPSHIRE-VERMONT
MASCOMA QUADRANGLE



Topography by Hersey Munroe, Roscoe Reeves, and E.V. Holloway
Culture and drainage in part compiled from aerial photographs
taken by Air Corps, U.S. Army
Surveyed in 1927

ROAD CLASSIFICATION
Heavy-duty ——— Light-duty ———
Medium-duty ——— Unimproved dirt ———
Interstate Route U.S. Route State Route

APPROXIMATE MEAN
DECLINATION, 1927



CONTOUR INTERVAL 20 FEET
DATUM IS MEAN SEA LEVEL

FOR SALE BY U.S. GEOLOGICAL SURVEY, WASHINGTON, D. C. 20242
A FOLDER DESCRIBING TOPOGRAPHIC MAPS AND SYMBOLS IS AVAILABLE ON REQUEST

U.S.G.S.
FILE COPY
TOPOGRAPHIC DIVISION

Polyconic projection. 1927 North American datum
10 000 foot grid based on New Hampshire
rectangular coordinate system
1000 meter Universal Transverse Mercator grid ticks,
zone 18, shown in blue
9 MI. TO U.S. 4
9 MI. TO U.S. 4
State boundary in controversy

MASCOMA, N.H.-VT.
N4330-W7200/15
1927

11035
AUG 19 1968