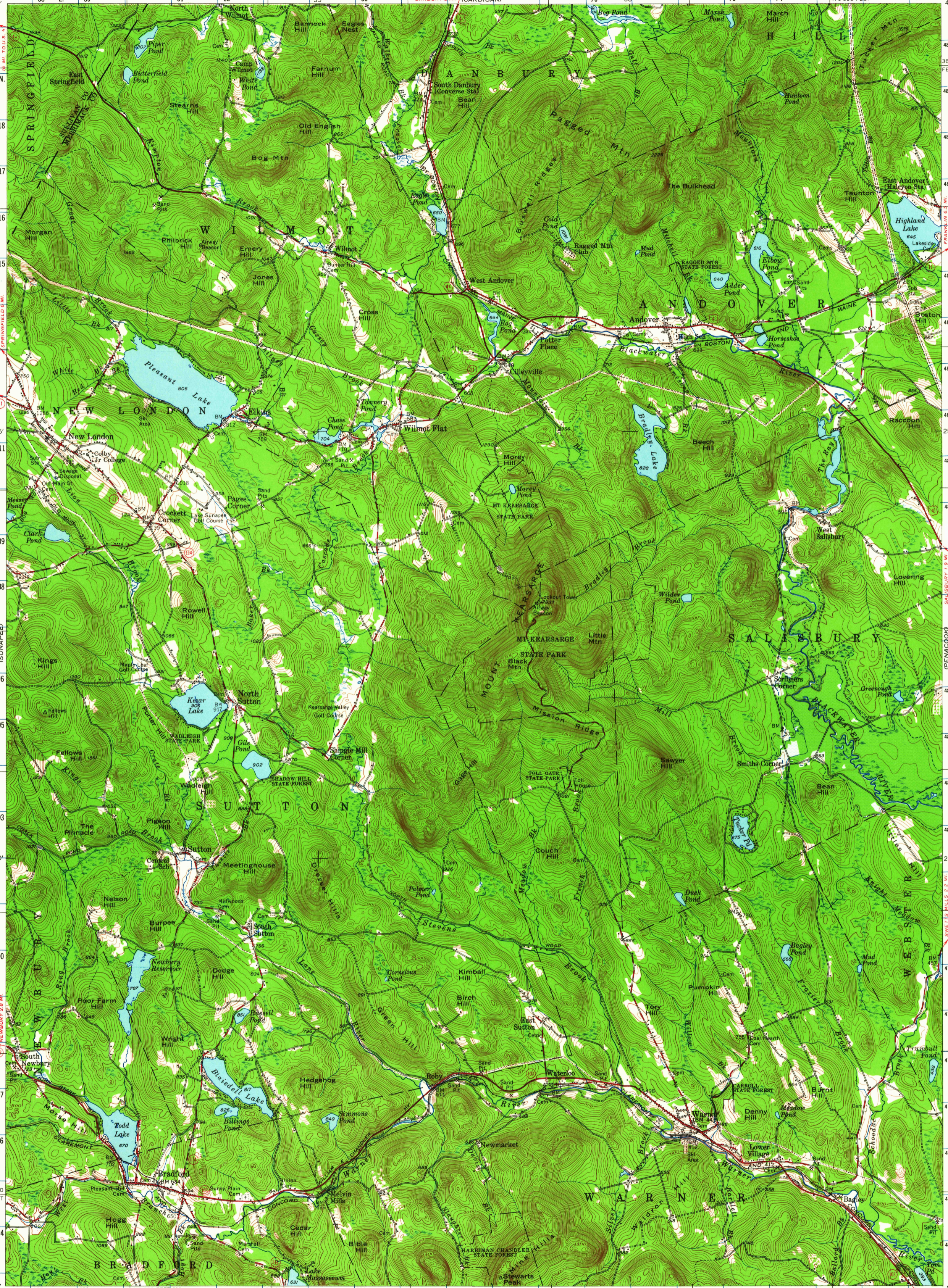


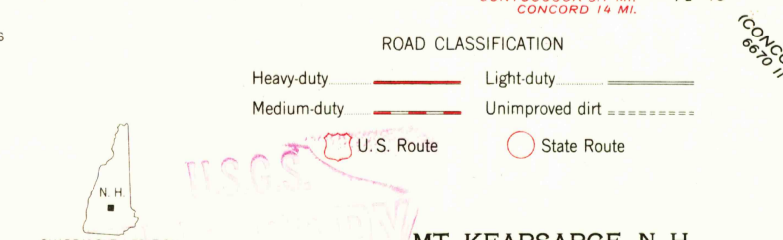
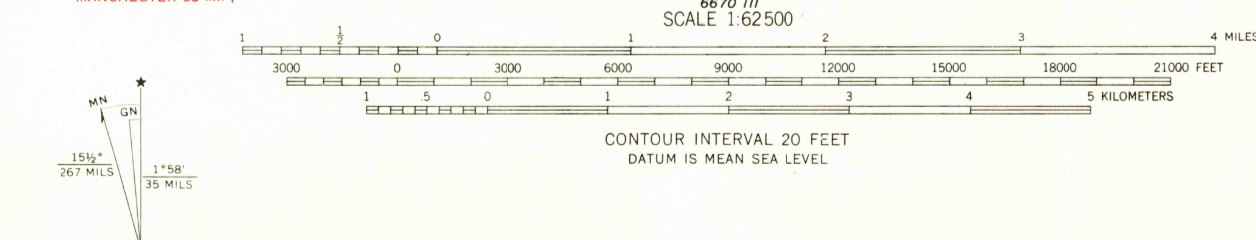
72°00' 2580000 E. 259 261 262 55' 265 270 50' 273 274 470 000 FEET 277 71°45' 43°30'

4819000 N. 4818 4817 4816 4815 4814 4813 4812 4811 4810 4809 4808 4807 4806 4805 4804 4803 4802 4801 4800 4799 4798 4797 4796 4795 4794 4793000 N.

CLAREMONT 23 MI. GEORGES MILLS SPRINGFIELD 6 MI. LEANON 30 MI. DANBURY 2 MI. (CARDIGAN) 6671 III. LACONIA 30 MI. SALESBURY 7.9 MI. CONCORD 19 MI. (PENACOOK) 6670 I. NEWBURY 2.8 MI. (SUNAPEE) 6570 I. (MASCOTA) 6571 II. (WOLDSNESS) 6672 II. (CONCORD) 6670 I. (LOVELL MTN) 6560 I.



Mapped, edited, and published by the Geological Survey
Control by USGS and USC&GS
Topography by planetable surveys 1926. Revised 1956
Polyconic projection. 1927 North American datum
10,000-foot grid based on New Hampshire coordinate system
1000-meter Universal Transverse Mercator grid ticks,
zone 19, shown in blue
Area along Blackwater River covered by dashed light-blue
pattern is subject to controlled inundation to 566 feet



USGS
Historical File
Topographic Division

SEP 21 1964

8075