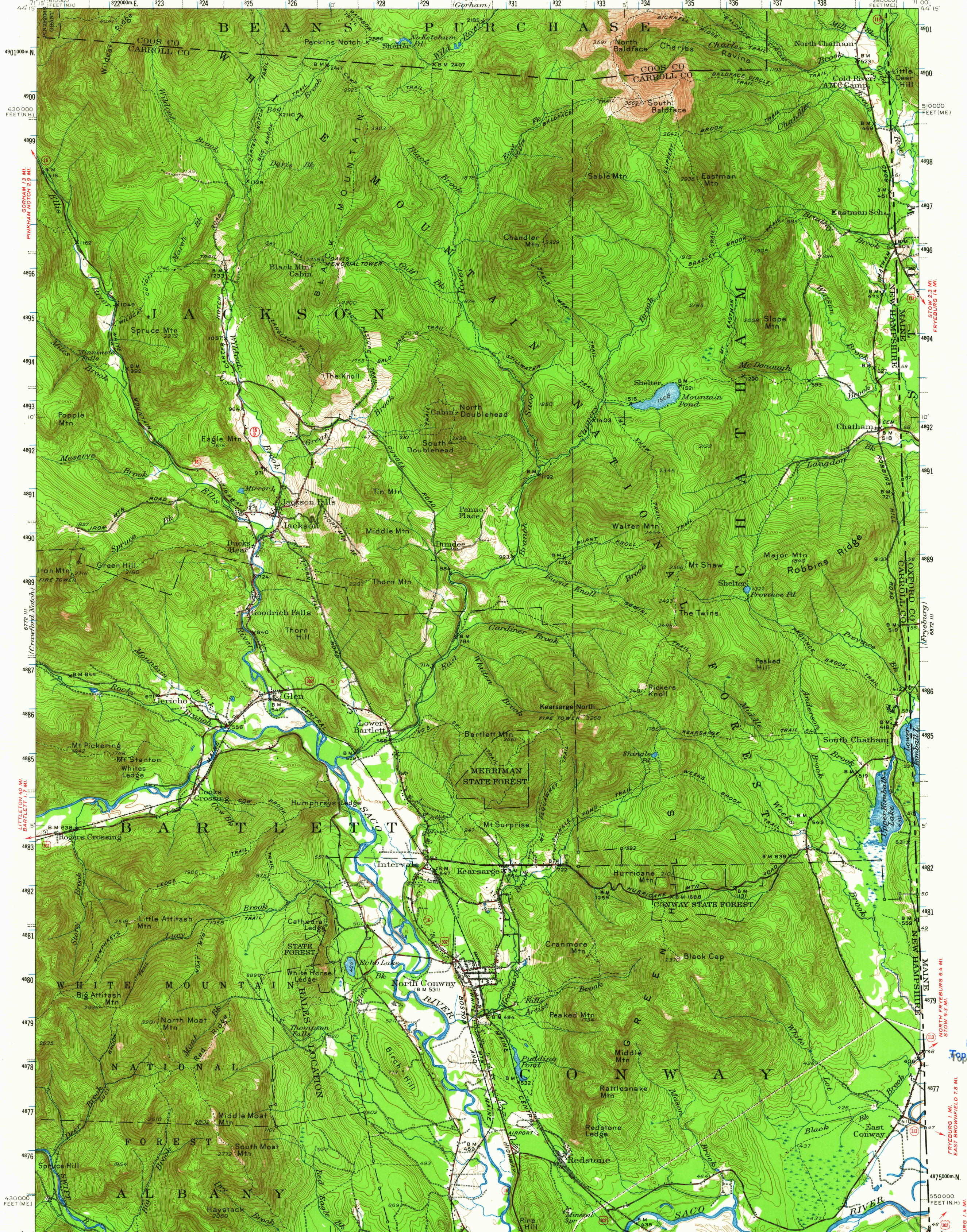


UNITED STATES
DEPARTMENT OF THE INTERIOR
GEOLOGICAL SURVEY

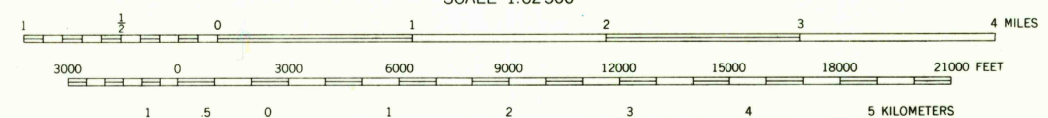
NEW HAMPSHIRE-MAINE
NORTH CONWAY QUADRANGLE
15-MINUTE SERIES



Map by the Geological Survey
1942

ROAD CLASSIFICATION
Heavy-duty ——— Light-duty ———
Medium-duty ——— Unimproved dirt ———
U.S. Route State Route

UTM GRID AND 1942 MAGNETIC NORTH
DECLINATION AT CENTER OF SHEET



CONTOUR INTERVAL 20 FEET
DATUM IS MEAN SEA LEVEL

FOR SALE BY U.S. GEOLOGICAL SURVEY, WASHINGTON, D. C. 20242
A FOLDER DESCRIBING TOPOGRAPHIC MAPS AND SYMBOLS IS AVAILABLE ON REQUEST

Polyconic projection. To place on 1927 North American datum
move projection lines 50 feet north
10,000-foot grids based on New Hampshire and
Maine (West) rectangular coordinate systems
1000-meter Universal Transverse Mercator grid ticks,
zone 19, shown in blue

U.S.G.S.
TOPOGRAPHIC DIVISION

NORTH CONWAY N.H.-ME.

1942

AMS 6772 II-SERIES V712

10,480
FEB 1 1966