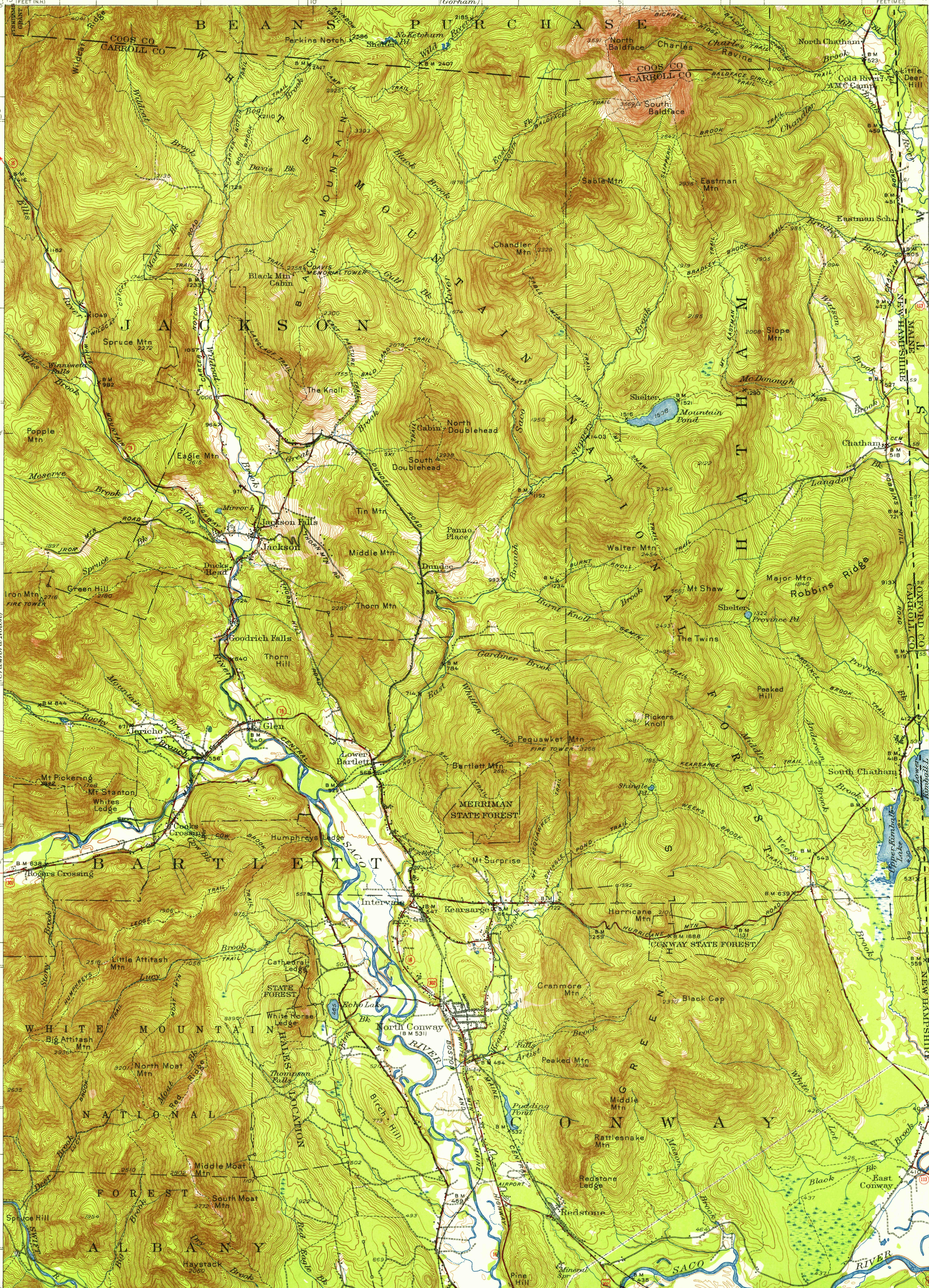


UNITED STATES
DEPARTMENT OF THE INTERIOR
GEOLOGICAL SURVEY

GILEAD (JUNC. U.S. 2) 12 MI.
HASTINGS 8.8 MI.
NEW HAMPSHIRE-MAINE
NORTH CONWAY QUADRANGLE
15-MINUTE SERIES

U.S.G.S.
FILE COPY
TOPOGRAPHIC DIVISION



Mapped by the Geological Survey
1942

SCALE 1:62500

Polyconic projection, North American datum
5000 yard grid based on U.S. zone system, A
10000 foot grids based on New Hampshire and
Maine (West) rectangular coordinate systems

ROAD CLASSIFICATION
Heavy-duty ——— 4 LANE 16 LANE Light-duty ———
Medium-duty ——— 4 LANE 16 LANE Unimproved dirt ———
U.S. Route State Route

3000 0 3000 6000 9000 12000 15000 18000 21000 FEET
1 5 0 1 2 3 4 5 KILOMETERS

CONTOUR INTERVAL 20 FEET
DATUM IS MEAN SEA LEVEL

FOR SALE BY U.S. GEOLOGICAL SURVEY, WASHINGTON 25, D. C.
A FOLDER DESCRIBING TOPOGRAPHIC MAPS AND SYMBOLS IS AVAILABLE ON REQUEST

U.S.G.S.
FILE COPY
TOPOGRAPHIC DIVISION

NORTH CONWAY, N.H.-ME.
N44°00' W71°00' 15

1942 USGS
Historical File
Topographic Division

FEB 21 1950

6185