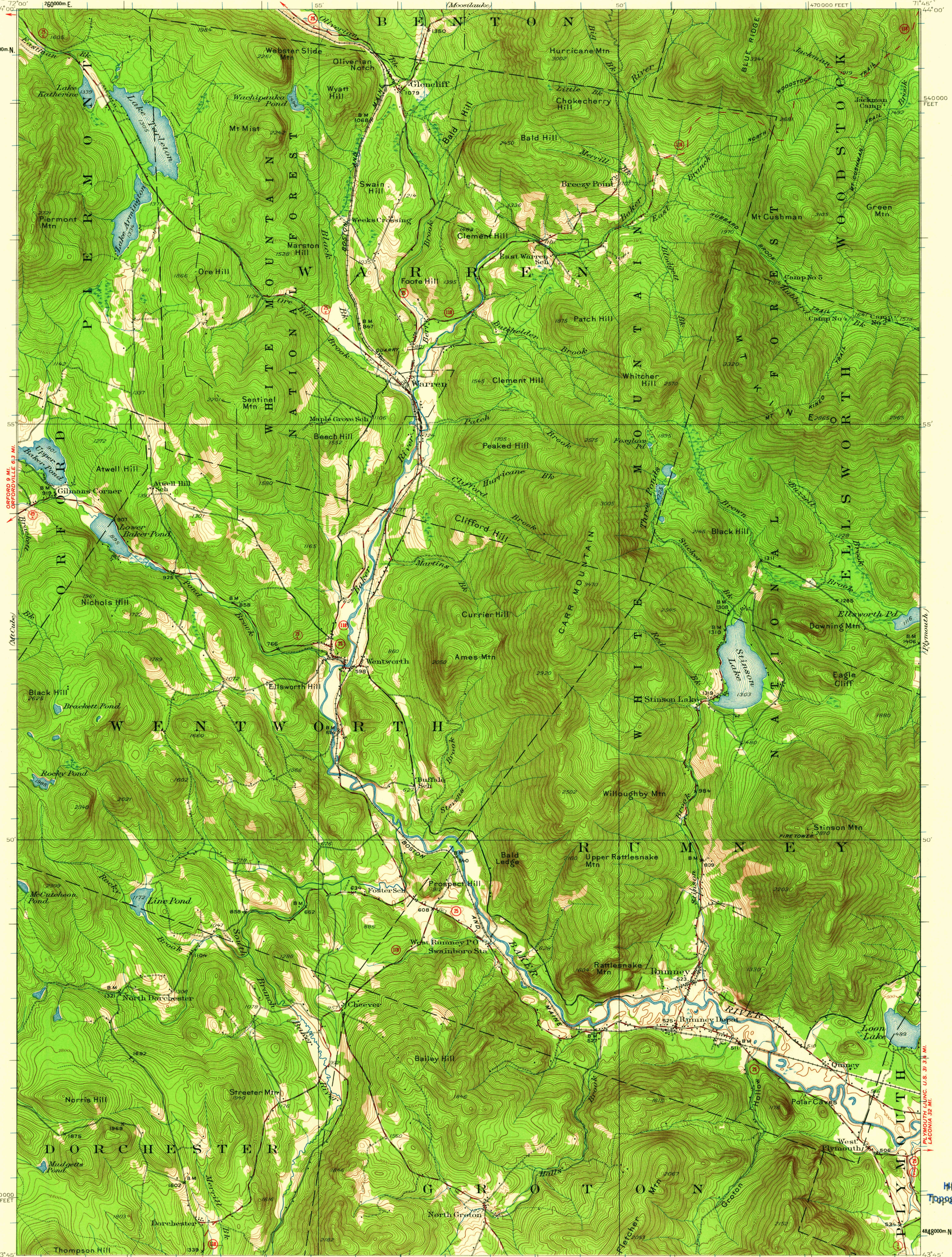


UNITED STATES
DEPARTMENT OF THE INTERIOR
GEOLOGICAL SURVEY

STATE OF NEW HAMPSHIRE
HIGHWAY DEPARTMENT

NORTH WOODSTOCK WHITEFIELD 35 MI.
NEW HAMPSHIRE
(GRAFTON COUNTY)
RUMNEY QUADRANGLE



Topography by A.J. Ogle and H.A. Bean. BUCKS CORNER 0.9 MI. CANAAN 8.7 MI.
Culture and drainage in part compiled from
aerial photographs taken by Air Corps, U.S. Army
Surveyed in 1928

ROAD CLASSIFICATION
Medium-duty ——— Light-duty ———
Unimproved dirt ———
State Route

APPROXIMATE MEAN
DECLINATION, 1928

SCALE 1:62,500
1 2 3 4 MILES
3000 6000 9000 12000 15000 18000 21000 FEET
1 2 3 4 5 KILOMETERS

CONTOUR INTERVAL 20 FEET
DATUM IS MEAN SEA LEVEL

FOR SALE BY U.S. GEOLOGICAL SURVEY, WASHINGTON 25, D. C.
A FOLDER DESCRIBING TOPOGRAPHIC MAPS AND SYMBOLS IS AVAILABLE ON REQUEST

INTERIOR—GEOLOGICAL SURVEY, WASHINGTON, D. C.—1962
MR 2439

Polyconic projection, 1927 North American datum
10 000-foot grid based on New Hampshire
rectangular coordinate system
1000-meter Universal Transverse Mercator grid ticks,
zone 19, shown in blue

U.S.G.S. RUMNEY, N.H.
N4345-W7145/15
1928
FILE COPY
TOPOGRAPHIC DIVISION

U.S.G.S.
Historical File
Topographic Division

OCT - 4 1962

6230