

INDIAN STREAM  
6774 II  
873 IV

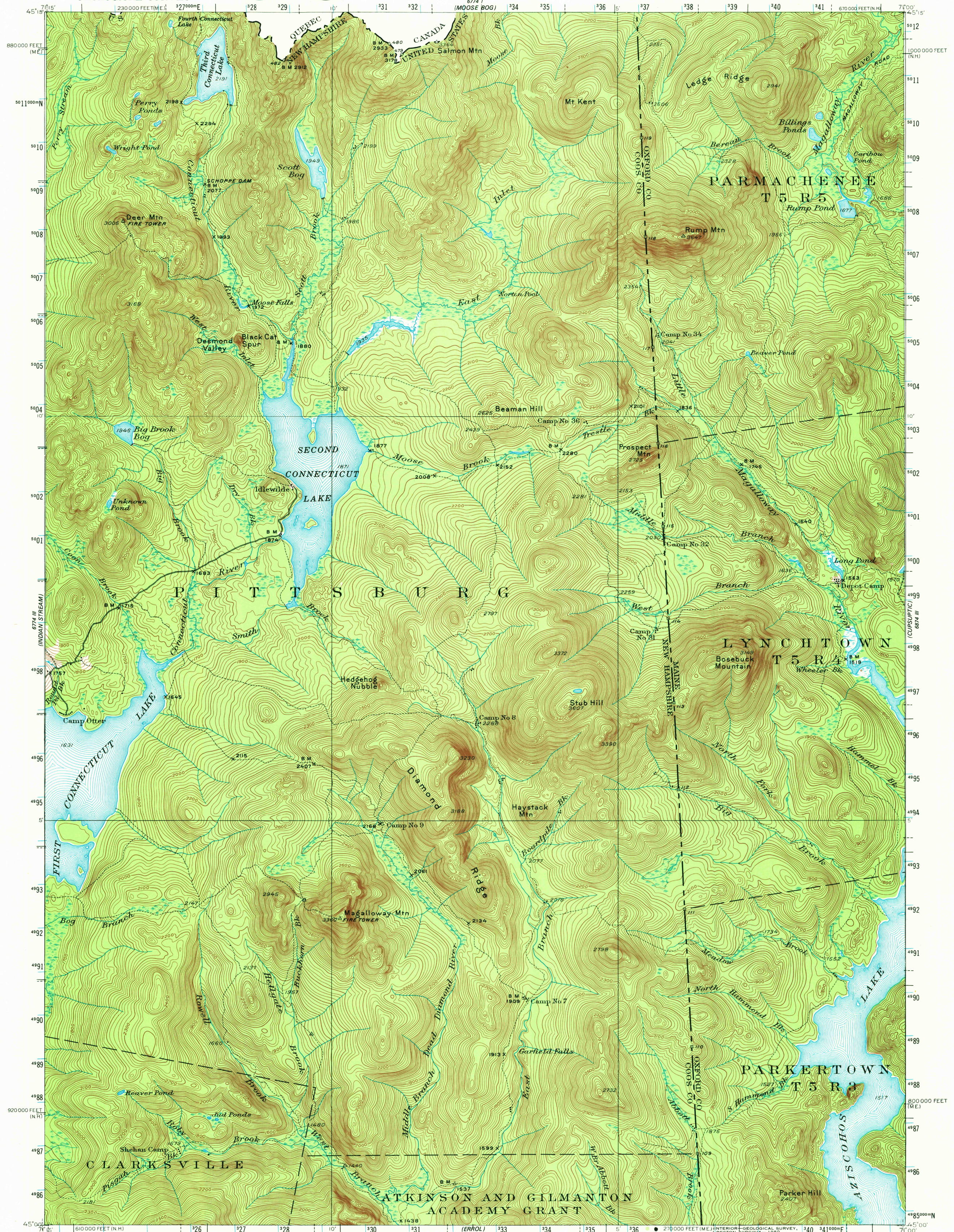
UNITED STATES  
DEPARTMENT OF THE INTERIOR  
GEOLOGICAL SURVEY



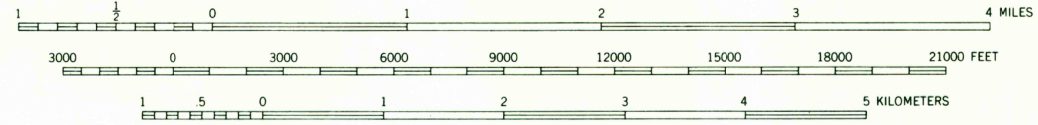
UNITED STATES  
DEPARTMENT OF THE ARMY  
CORPS OF ENGINEERS

SECOND CONNECTICUT LAKE QUADRANGLE  
NEW HAMPSHIRE-MAINE  
15-MINUTE SERIES (TOPOGRAPHIC)

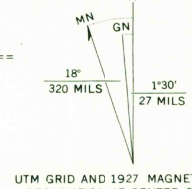
6774 IV  
873 IV  
ARNOLD POND



Topography by J. I. Gayetty, H. R. Kilmer, W. C. Thompson, Crawford Dickey, and International Boundary Commission Surveyed in 1927



ROAD CLASSIFICATION  
Light-duty road, all weather, Unimproved road, fair or dry improved surface  
Trails



CONTOUR INTERVAL 20 FEET  
NATIONAL GEODETIC VERTICAL DATUM OF 1929

Polyconic projection. 1927 North American Datum 10,000-foot grids based on New Hampshire and Maine (West) rectangular coordinate system 100-meter Universal Transverse Mercator grid ticks, zone 19, shown in blue  
To place on the predicted North American Datum 1983 move the projection lines 2 meters south and 19 meters west as shown by dashed corner ticks

SECOND CONNECTICUT LAKE, N. H.-ME.  
(FORMERLY SECOND LAKE)  
N4500-W7100/15

FOR SALE BY U.S. GEOLOGICAL SURVEY, RESTON, VIRGINIA 22092  
A FOLDER DESCRIBING TOPOGRAPHIC MAPS AND SYMBOLS IS AVAILABLE ON REQUEST

1927

DMA 6774 II-SERIES V712