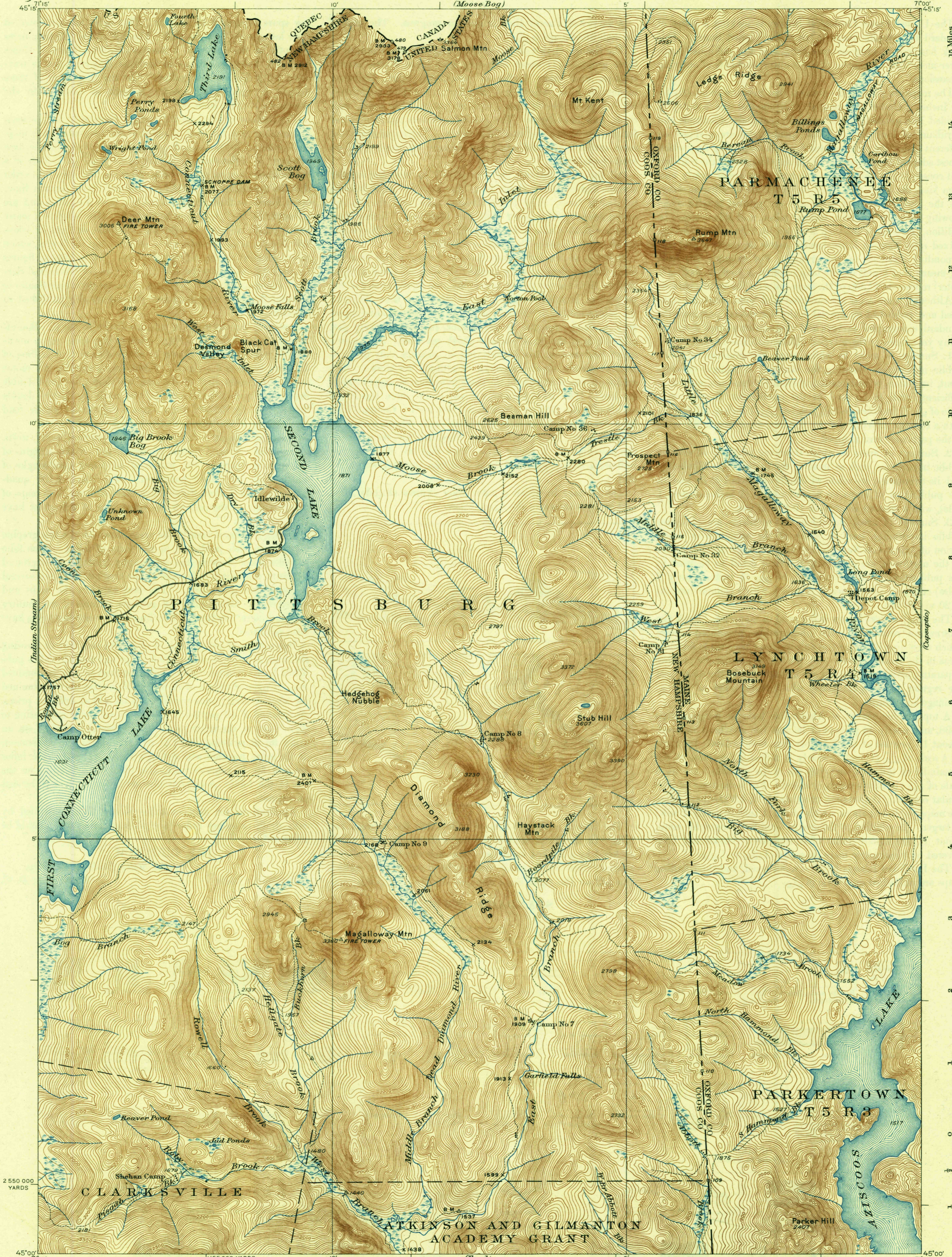
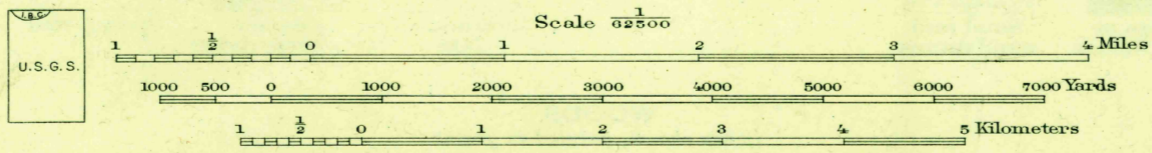


U. S. G. S.  
FILE COPY  
Inspection and Editing



Topography by J. I. Gayetty, H. R. Kilmer, W. C. Thompson,  
Crawford Dickey, and International Boundary Commission  
Surveyed in 1927



Polyconic projection, North American datum  
5000 yard grid based upon U.S. zone system, A

APPROXIMATE MEAN  
DECLINATION, 1927

SECOND LAKE, N.H.-ME.  
Edition of 1932  
reprinted 1938

Contour interval 20 feet.  
Datum is mean sea level.

USGS  
Historical File  
Topographic Division

U. S. G. S.  
FILE COPY

APR 19 1938