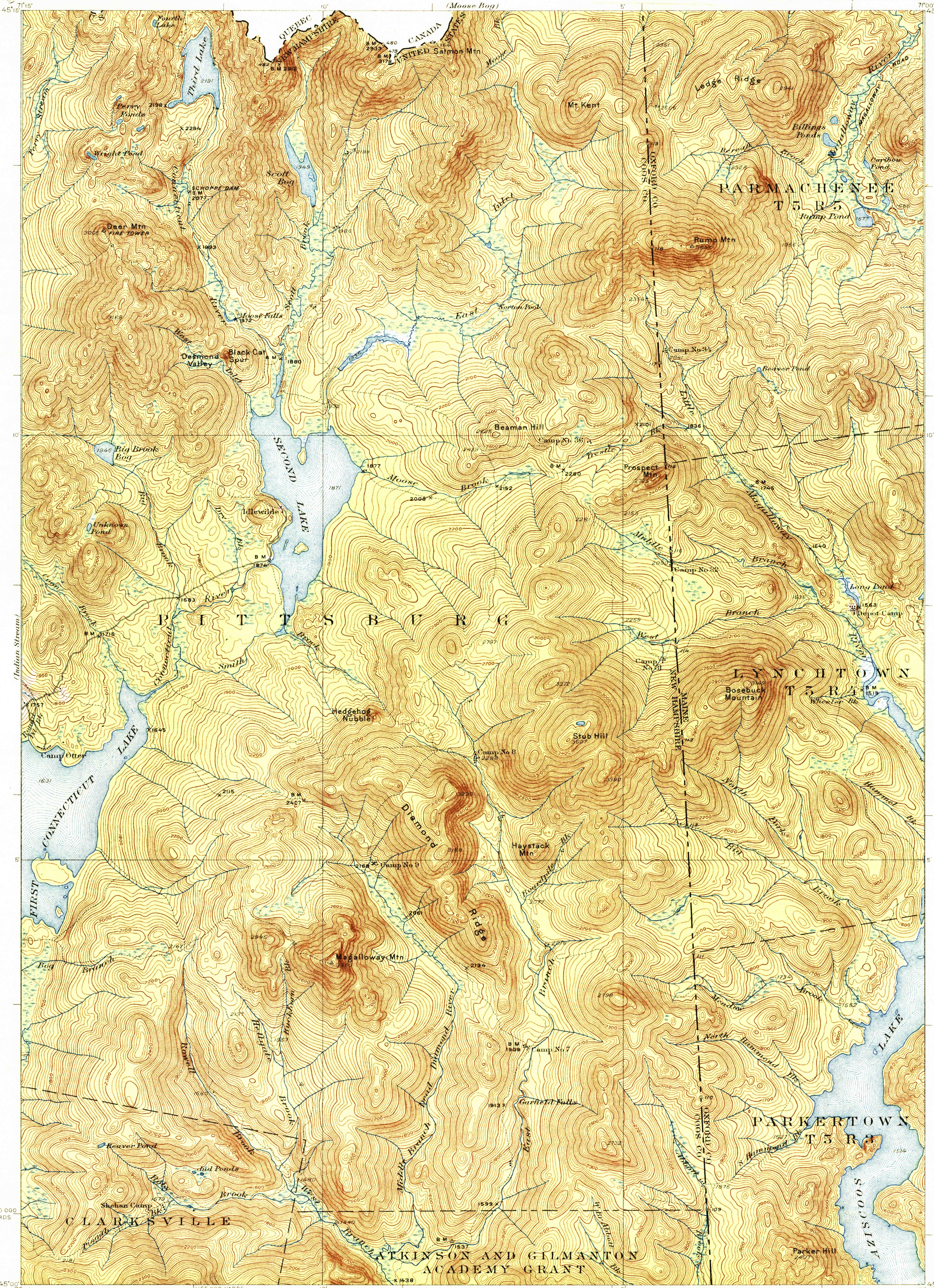


U. S. G. S.
FILE COPY
Inspection and Editing



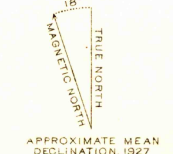
2550 000
YARDS

Topography by J. I. Gayetty, H. R. Kilmer, W. C. Thompson,
Crawford Dickey, and International Boundary Commission
Control by U. S. Geological Survey and
International Boundary Commission
Surveyed in 1927

U. S. G. S.
FILE COPY
Inspection and Editing



Contour interval 20 feet
Datum is mean sea level



Polyconic projection, North American datum
5000 yard grid based upon U. S. zone system, A

SECOND LAKE, N. H.-ME.
Edition of 1932
2571:1480 (1932)

USCS
Historical File
Topographic Division

JAN 1 8 1933 (3410) 3410