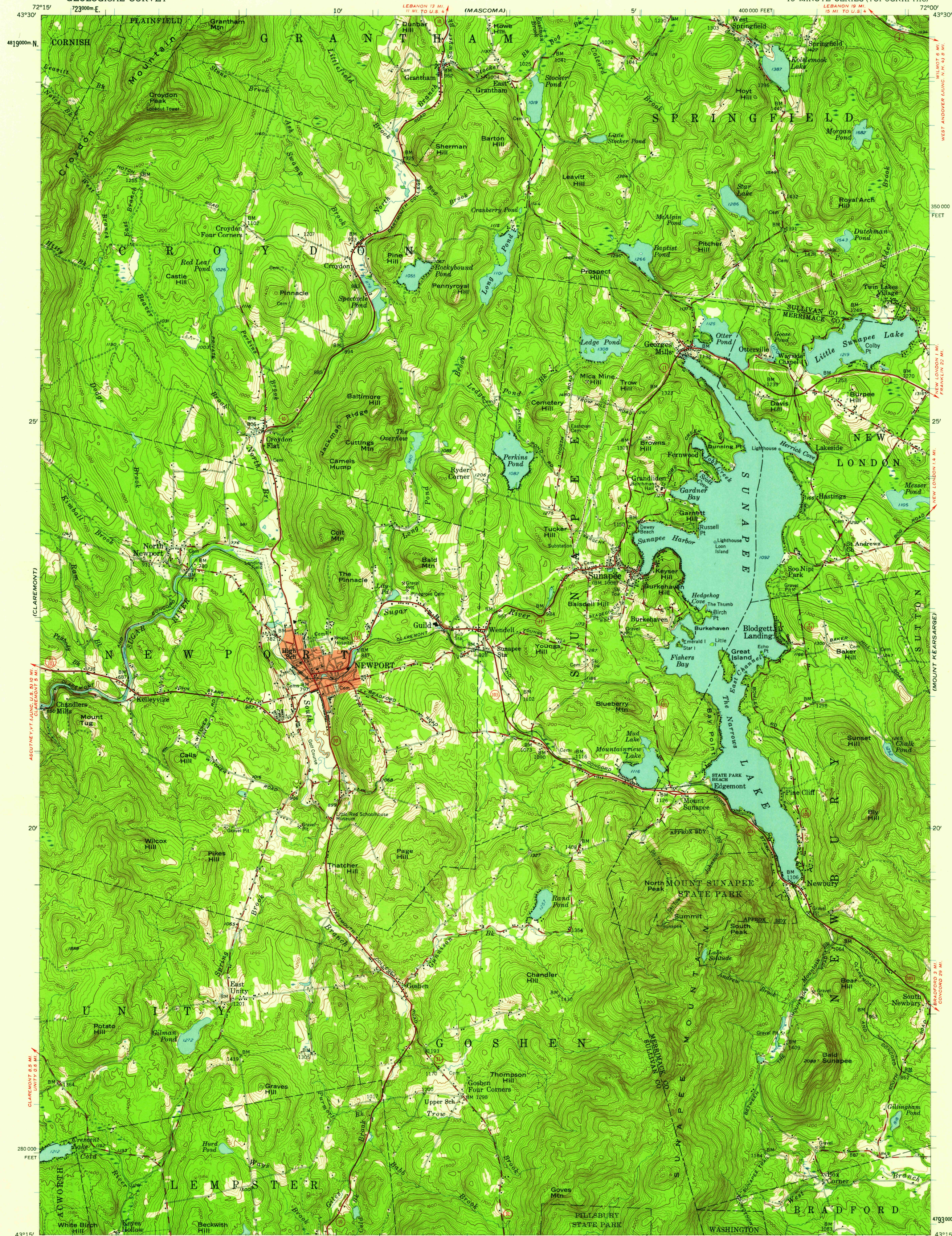
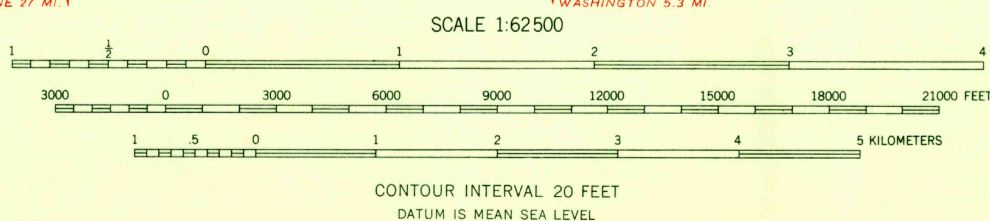


UNITED STATES
DEPARTMENT OF THE INTERIOR
GEOLOGICAL SURVEY

SUNAPEE QUADRANGLE
NEW HAMPSHIRE
15 MINUTE SERIES (TOPOGRAPHIC)



Mapped, edited, and published by the Geological Survey
Control by USGS and USC&GS
Topography from aerial photographs by ER-55
Aerial photographs taken 1954. Field check 1955
Polyconic projection. 1927 North American datum
10,000-foot grid based on New Hampshire coordinate system
1000-meter Universal Transverse Mercator grid ticks,
zone 18, shown in blue
Red tint indicates area in which only
landmark buildings are shown
Unchecked elevations are shown in brown



ROAD CLASSIFICATION
Heavy-duty ——— Light-duty ———
Medium-duty ——— Unimproved dirt ———
○ State Route

SUNAPEE, N. H.
N4315-W7200/15
1955

THIS MAP COMPLIES WITH NATIONAL MAP ACCURACY STANDARDS
FOR SALE BY U. S. GEOLOGICAL SURVEY, WASHINGTON 25, D. C.
A FOLDER DESCRIBING TOPOGRAPHIC MAPS AND SYMBOLS IS AVAILABLE ON REQUEST

U.S.G.S.
FILE COPY
Historical File
Topographic Division
NOV 18 1958
9835