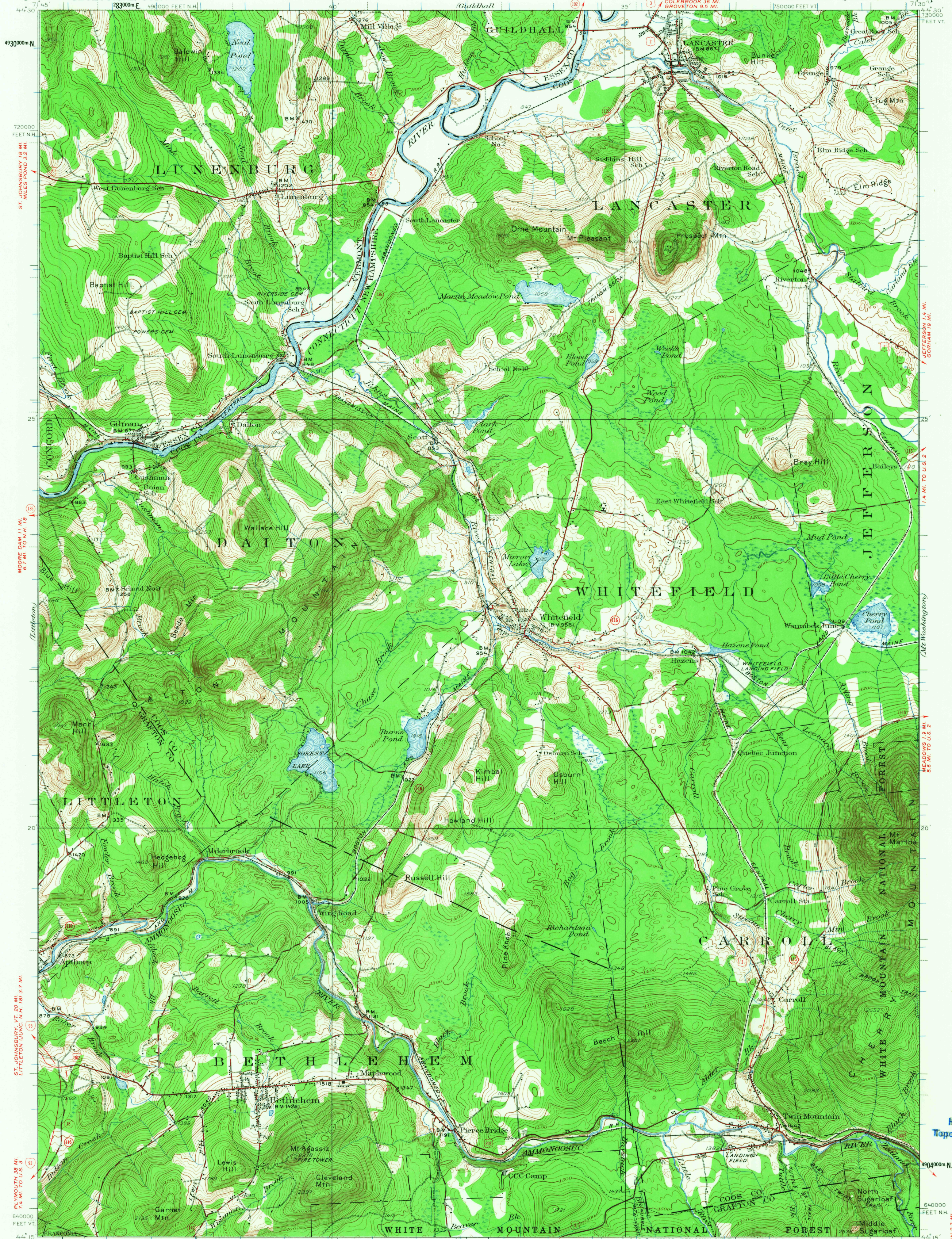


UNITED STATES
DEPARTMENT OF THE INTERIOR
GEOLOGICAL SURVEY

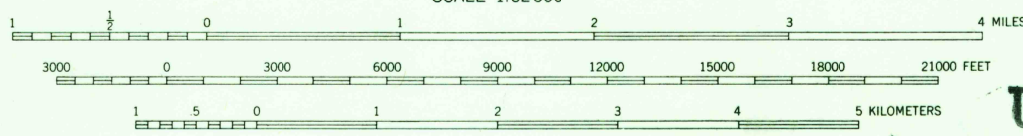
NEW HAMPSHIRE-VERMONT
WHITEFIELD QUADRANGLE



Topography by Roscoe Reeves, A.T. Fowler, S.L. Parker,
F.H. Sargent, Paul Blake, and R.F. Hamke
Surveyed in 1934-1935

ROAD CLASSIFICATION
Heavy-duty ——— Light-duty ———
Medium-duty ——— Unimproved dirt ———
Interstate Route U.S. Route State Route

APPROXIMATE MEAN
DECLINATION, 1935



CONTOUR INTERVAL 20 FEET
DATUM IS MEAN SEA LEVEL

U.S.G.S.

WHITEFIELD, N.H.-VT.
N4415-W7130/15

1935

FOR SALE BY U.S. GEOLOGICAL SURVEY, WASHINGTON, D.C. 20242
A FOLDER DESCRIBING TOPOGRAPHIC MAPS AND SYMBOLS IS AVAILABLE ON REQUEST

Polyconic projection. To place on 1927 North American datum
move projection lines 50 feet north
10,000-foot grid based on New Hampshire and Vermont
rectangular coordinate systems
1000-meter Universal Transverse Mercator grid ticks,
zone 19, shown in blue

USGS
Historical File
Topographic Division

9245
JUN 12 1968